

À des fins de recherche uniquement

Anticorps Polyclonal de lapin anti-ATL3



Numéro de catalogue: 16921-1-AP

Phare

9 Publications

Informations de base

Numéro de catalogue:

16921-1-AP

Taille:

150ul, Concentration: 450 µg/ml by Nanodrop;

Hôte:

Lapin

Isotype:

IgG

Immunogen Catalog Number:

AG10279

Numéro d'acquisition GenBank:

BC077727

Identification du gène (NCBI):

25923

Nom complet:

atlastin GTPase 3

MW calculé

541 aa, 61 kDa

MW observés:

61 kDa

Méthode de purification:

Purification par affinité contre l'antigène

Dilutions recommandées:

WB 1:2000-1:12000

IP 0.5-4.0 µg for IP and 1:2000-1:10000 for WB

IF 1:50-1:500

Applications

Applications testées:

IF, IP, WB, ELISA

Demandes citées:

CoIP, IF, IP, WB

Spécificité de l'espèce:

Humain, rat, souris

Espèces citées:

Humain, singe, souris

Contrôles positifs:

WB : cellules HEK-293T, cellules HEK-293, cellules HeLa, cellules HepG2, cellules Jurkat, cellules NIH/3T3, cellules SMMC-7721, tissu hépatique de rat, tissu hépatique de souris

IP : cellules HeLa,

IF : cellules HeLa, cellules HepG2

Informations générales

ATL3, belonging to a class of dynamin-like GTPase, was reported to mediate ER fusion. ATL3 is required for the proper formation of the network of interconnected tubules of the endoplasmic reticulum. ATL3 functions as a receptor for ER-phagy, promoting tubular ER degradation upon starvation. Mutations in this gene may be associated with hereditary sensory neuropathy type IF.

Publications notables

Autrice	Pubmed ID	Journal	Application
Pengli Zheng	30030520	Cell Res	WB
Qingzhou Chen	30773365	Curr Biol	CoIP, WB
Pengli Zheng	34912111	Nature	WB, IP

Stockage

Stockage:

Stocker à -20°C. Stable pendant un an après l'expédition.

Tampon de stockage:

PBS avec azoture de sodium à 0,02 % et glycérol à 50 % pH 7,3

L'aliquotage n'est pas nécessaire pour le stockage à -20C

*** Les 20ul contiennent 0,1% de BSA.

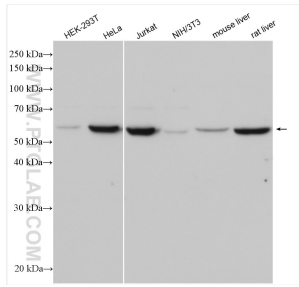
For technical support and original validation data for this product please contact:

T: 1 (888) 4PTGLAB (1-888-478-4522) (toll free in USA), or 1(312) 455-8498 (outside USA)

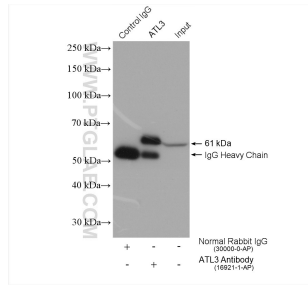
E: proteintech@ptglab.com
W: ptglab.com

This product is exclusively available under Proteintech Group brand and is not available to purchase from any other manufacturer.

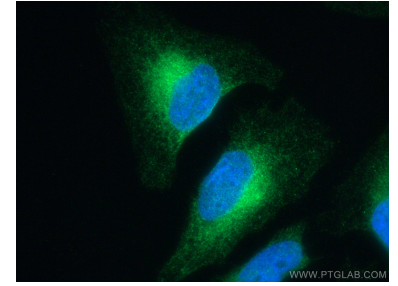
Données de validation sélectionnées



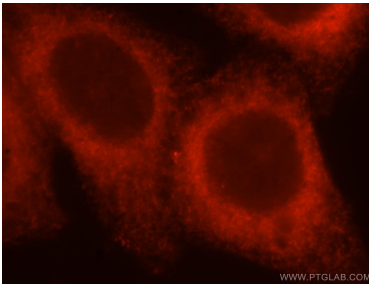
Various lysates were subjected to SDS PAGE followed by western blot with 16921-1-AP (ATL3 antibody) at dilution of 1:6000 incubated at room temperature for 1.5 hours.



IP result of anti-ATL3 (IP:16921-1-AP, 4ug; Detection:16921-1-AP 1:5000) with HeLa cells lysate 1720 ug.



Immunofluorescent analysis of (4% PFA) fixed HeLa cells using ATL3 antibody (16921-1-AP) at dilution of 1:200 and CoraLite®488-Conjugated AffiniPure Goat Anti-Rabbit IgG(H+L).



Immunofluorescent analysis of HepG2 cells, using ATL3 antibody 16921-1-AP at 1:25 dilution and Rhodamine-labeled goat anti-rabbit IgG (red).