

À des fins de recherche uniquement

Anticorps Polyclonal de lapin anti-Vitamin D binding protein



Numéro de catalogue: 16922-1-AP

6 Publications

Informations de base

Numéro de catalogue: 16922-1-AP	Numéro d'acquisition GenBank: BC057228	Méthode de purification: Purification par affinité contre l'antigène
Taille: 150ul, Concentration: 300 µg/ml by Nanodrop and 200 µg/ml by Bradford method using BSA as the standard;	Identification du gène (NCBI): 2638	Dilutions recommandées: WB 1:1000-1:4000 IHC 1:50-1:500
Hôte: Lapin	Nom complet: group-specific component (vitamin D binding protein)	
Isotype: IgG	MW calculé: 474 aa, 53 kDa	
Immunogen Catalog Number: AG10286	MW observés: 52-58 kDa	

Applications

Applications testées:

IHC, WB, ELISA

Demandes citées:

IHC, WB

Spécificité de l'espèce:

Humain, rat, souris

Espèces citées:

rat, souris

Remarque-IHC: il est suggéré de démasquer l'antigène avec un tampon de TE buffer pH 9,0; (*) A défaut, 'le démasquage de l'antigène peut être 'effectué avec un tampon citrate pH 6,0.

Contrôles positifs:

WB : tissu sanguin humain, cellules PC-3, plasma humain, tissu oculaire de rat, tissu oculaire de souris, tissu testiculaire de souris

IHC : tissu hépatique humain,

Informations générales

Vitamin D binding protein is a sparsely glycosylated serum protein responsible for highly specific binding and tissue-specific delivery of vitamin D and its metabolites. In addition, it is also an actin scavenger, and is the precursor to the immunomodulatory protein, Gc-MAF. Vitamin D binding protein has been proposed to have significant roles in C5a chemotaxis, osteoclast development and possibly in macrophage activation/recruitment.

Publications notables

Autrice	Pubmed ID	Journal	Application
Manish Kumar Yadav	36284768	Mol Ther Methods Clin Dev	WB
Yang Lu	26791873	Proteomics	
Yichen Guo	28656274	Mol Med Rep	WB,IHC

Stockage

Stockage:

Stocker à -20°C. Stable pendant un an après l'expédition.

Tampon de stockage:

PBS avec azoture de sodium à 0,02 % et glycérol à 50 % pH 7,3

L'aliquotage n'est pas nécessaire pour le stockage à -20C

*** Les 20ul contiennent 0,1% de BSA.

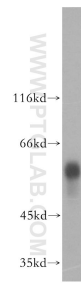
For technical support and original validation data for this product please contact:

T: 1 (888) 4PTGLAB (1-888-478-4522) (toll free in USA), or 1(312) 455-8498 (outside USA)

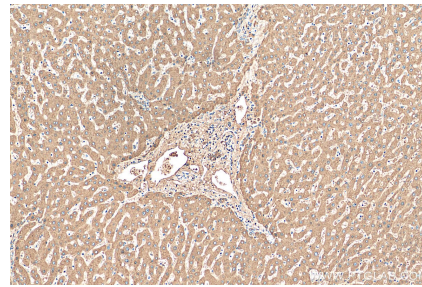
E: proteintech@ptglab.com
W: ptglab.com

This product is exclusively available under Proteintech Group brand and is not available to purchase from any other manufacturer.

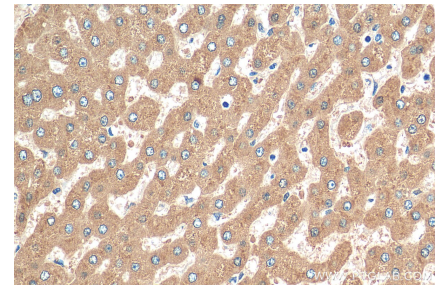
Données de validation sélectionnées



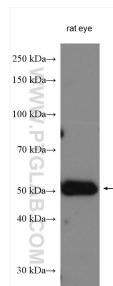
human blood were subjected to SDS PAGE followed by western blot with 16922-1-AP (vitamin D binding protein antibody) at dilution of 1:1500 incubated at room temperature for 1.5 hours.



Immunohistochemical analysis of paraffin-embedded human liver tissue slide using 16922-1-AP (Vitamin D binding protein antibody) at dilution of 1:200 (under 10x lens). Heat mediated antigen retrieval with Tris-EDTA buffer (pH 9.0).



Immunohistochemical analysis of paraffin-embedded human liver tissue slide using 16922-1-AP (Vitamin D binding protein antibody) at dilution of 1:200 (under 40x lens). Heat mediated antigen retrieval with Tris-EDTA buffer (pH 9.0).



rat eye tissue were subjected to SDS PAGE followed by western blot with 16922-1-AP (Vitamin D binding protein antibody) at dilution of 1:3000 incubated at room temperature for 1.5 hours.