

À des fins de recherche uniquement

Anticorps Polyclonal de lapin anti-Calcyphosine



Numéro de catalogue: 16926-1-AP

Informations de base

Numéro de catalogue: 16926-1-AP	Numéro d'acquisition GenBank: BC080599	Méthode de purification: Purification par affinité contre l'antigène
Taille: 150ul, Concentration: 500 µg/ml by Nanodrop and 260 µg/ml by Bradford method using BSA as the standard;	Identification du gène (NCBI): 828	Dilutions recommandées: WB 1:1000-1:8000 IHC 1:50-1:500
Hôte: Lapin	Nom complet: calcyphosine	
Isotype: IgG	MW calculé: 189 aa, 21 kDa	
Immunogen Catalog Number: AG10330	MW observés: 21 kDa	

Applications

Applications testées:
IHC, WB, ELISA

Spécificité de l'espèce:
Humain

Remarque-IHC: il est suggéré de démasquer l'antigène avec un tampon de TE buffer pH 9.0; (*) À défaut, le démasquage de l'antigène peut être effectué avec un tampon citrate pH 6,0.

Contrôles positifs:

WB : tissu placentaire humain, tissu de côlon humain, tissu splénique humain

IHC : tissu de cancer de l'oesophage humain,

Informations générales

calcyphosine is a calcium-binding protein, which may play a role in the regulation of ion transport. Calcyphosine (CAPS) was initially identified in the canine thyroid but has also been detected in humans and other mammals. CAPS synthesis is increased by thyroid-stimulating hormone and cAMP analogs that promote cell proliferation and maintain cell differentiation. Recently, CAPS was found to be involved in many kinds of tumor.

Stockage

Stockage:
Stocker à -20°C. Stable pendant un an après l'expédition.

Tampon de stockage:
PBS avec azoture de sodium à 0,02 % et glycérol à 50 % pH 7,3

L'aliquotage n'est pas nécessaire pour le stockage à -20C

*** Les 20ul contiennent 0,1% de BSA.

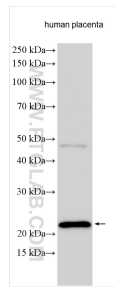
For technical support and original validation data for this product please contact:

T: 1 (888) 4PTGLAB (1-888-478-4522) (toll free in USA), or 1(312) 455-8498 (outside USA)

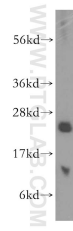
E: proteintech@ptglab.com
W: ptglab.com

This product is exclusively available under Proteintech Group brand and is not available to purchase from any other manufacturer.

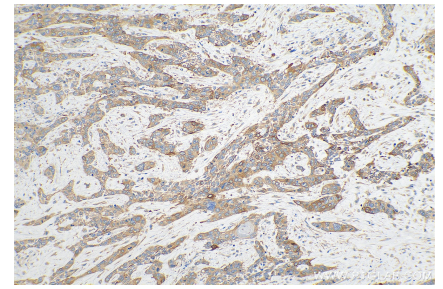
Données de validation sélectionnées



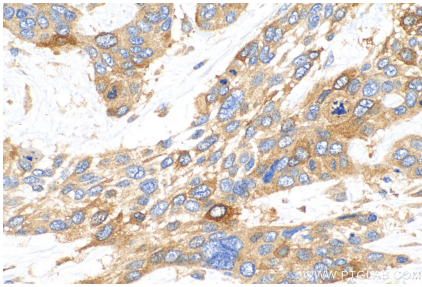
Human placenta tissue were subjected to SDS PAGE followed by western blot with 16926-1-AP (Calcyphosine antibody) at dilution of 1:4000 incubated at room temperature for 1.5 hours.



human spleen tissue were subjected to SDS PAGE followed by western blot with 16926-1-AP (Calcyphosine antibody) at dilution of 1:500 incubated at room temperature for 1.5 hours.



Immunohistochemical analysis of paraffin-embedded human oesophagus cancer tissue slide using 16926-1-AP (Calcyphosine antibody) at dilution of 1:200 (under 10x lens). Heat mediated antigen retrieval with Tris-EDTA buffer (pH 9.0).



Immunohistochemical analysis of paraffin-embedded human oesophagus cancer tissue slide using 16926-1-AP (Calcyphosine antibody) at dilution of 1:200 (under 40x lens). Heat mediated antigen retrieval with Tris-EDTA buffer (pH 9.0).