

À des fins de recherche uniquement

Anticorps Polyclonal de lapin anti-AP1B1



Numéro de catalogue: 16932-1-AP

3 Publications

Informations de base

Numéro de catalogue:

16932-1-AP

Taille:

150ul, Concentration: 750 µg/ml by Nanodrop and 333 µg/ml by Bradford method using BSA as the standard;

Hôte:

Lapin

Isotype:

IgG

Immunogen Catalog Number:

AG10417

Numéro d'acquisition GenBank:

BC046242

Identification du gène (NCBI):

162

Nom complet:

adaptor-related protein complex 1, beta 1 subunit

MW calculé

919 aa, 101 kDa

MW observés:

101 kDa

Méthode de purification:

Purification par affinité contre l'antigène

Dilutions recommandées:

WB 1:500-1:2400

IP 0.5-4.0 ug for IP and 1:200-1:1000 for WB

IF 1:50-1:500

Applications

Applications testées:

IF, IP, WB, ELISA

Demandes citées:

WB

Spécificité de l'espèce:

Humain

Espèces citées:

Humain

Contrôles positifs:

WB : cellules HEK-293,

IP : cellules HEK-293,

IF : cellules HepG2,

Informations générales

AP1B1 is a subunit of the adaptor complex AP-1 and is a member of the adaptin protein family. Adaptor protein (AP) complexes are cytosolic heterotetramers that mediate the sorting of membrane proteins in the secretory and endocytic pathways. AP-1 is found at the cytoplasmic face of coated vesicles located at the Golgi complex, where it mediates both the recruitment of clathrin to the membrane and the recognition of sorting signals within the cytosolic tails of transmembrane receptors.

Publications notables

Autrice	Pubmed ID	Journal	Application
Arunas Kvainickas	28935632	J Cell Biol	WB
Lynn M Boyden	31630788	Am J Hum Genet	WB
Antoine Rebendenne	35879413	Nat Genet	WB

Stockage

Stockage:

Stocker à -20°C. Stable pendant un an après l'expédition.

Tampon de stockage:

PBS avec azoture de sodium à 0,02 % et glycérol à 50 % pH 7,3

L'aliquotage n'est pas nécessaire pour le stockage à -20C

*** Les 20ul contiennent 0,1% de BSA.

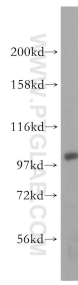
For technical support and original validation data for this product please contact:

T: 1 (888) 4PTGLAB (1-888-478-4522) (toll free in USA), or 1(312) 455-8498 (outside USA)

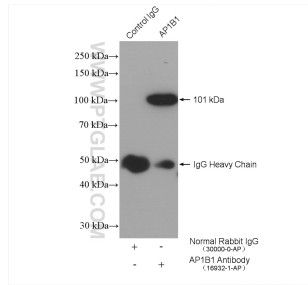
E: proteintech@ptglab.com
W: ptglab.com

This product is exclusively available under Proteintech Group brand and is not available to purchase from any other manufacturer.

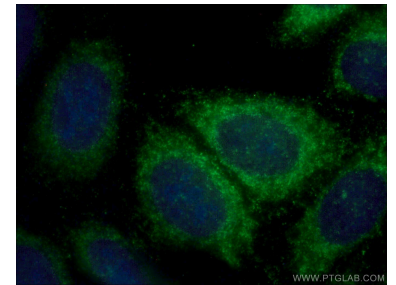
Données de validation sélectionnées



HEK-293 cells were subjected to SDS PAGE followed by western blot with 16932-1-AP (AP1B1 antibody) at dilution of 1:500 incubated at room temperature for 1.5 hours.



IP result of anti-AP1B1 (IP:16932-1-AP, 4ug; Detection:16932-1-AP 1:300) with HEK-293 cells lysate 2320 ug.



Immunofluorescent analysis of (-20°C Ethanol) fixed HepG2 cells using 16932-1-AP (AP1B1 antibody) at dilution of 1:50 and Alexa Fluor 488-Conjugated AffiniPure Goat Anti-Rabbit IgG(H+L).