

À des fins de recherche uniquement

# Anticorps Polyclonal de lapin anti-MEF2C



Numéro de catalogue: 16953-1-AP

## Informations de base

Numéro de catalogue:

16953-1-AP

Taille:

150ul, Concentration: 133 µg/ml by Nanodrop and 133 µg/ml by Bradford method using BSA as the standard;

Hôte:

Lapin

Isotype:

IgG

Immunogen Catalog Number:

AG10583

Numéro d'acquisition GenBank:

BC026341

Identification du gène (NCBI):

4208

Nom complet:

myocyte enhancer factor 2C

MW calculé

469 aa, 51 kDa

MW observés:

63 kDa

Méthode de purification:

Purification par affinité contre l'antigène

Dilutions recommandées:

WB 1:500-1:2000

## Applications

Applications testées:

WB, ELISA

Spécificité de l'espèce:

Humain, rat, souris

Contrôles positifs:

WB : tissu cardiaque humain, cellules HeLa, cellules

TF-1, tissu de muscle squelettique de souris

## Informations générales

MEF2C belongs to the MEF2 family. It is a transcription activator which binds specifically to the MEF2 element present in the regulatory regions of many muscle-specific genes. MEF2C controls cardiac morphogenesis and myogenesis, and is also involved in vascular development. It plays an essential role in hippocampal-dependent learning and memory by suppressing the number of excitatory synapses and thus regulating basal and evoked synaptic transmission. It is crucial for normal neuronal development, distribution, and electrical activity in the neocortex and is necessary for proper development of megakaryocytes and platelets and for bone marrow B lymphopoiesis. This protein is required for B-cell survival and proliferation in response to BCR stimulation, efficient IgG1 antibody responses to T-cell-dependent antigens and for normal induction of germinal center B cells. It may also be involved in neurogenesis and in the development of cortical architecture. This antibody is a rabbit polyclonal antibody raised against an internal region of human MEF2C.

## Stockage

Stockage:

Stocker à -20°C. Stable pendant un an après l'expédition.

Tampon de stockage:

PBS avec azoture de sodium à 0,02 % et glycérol à 50 % pH 7,3

L'aliquotage n'est pas nécessaire pour le stockage à -20C

\*\*\* Les 20ul contiennent 0,1% de BSA.

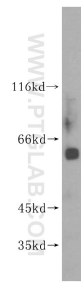
For technical support and original validation data for this product please contact:

T: 1 (888) 4PTGLAB (1-888-478-4522) (toll free in USA), or 1(312) 455-8498 (outside USA)

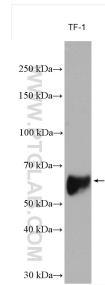
E: [proteintech@ptglab.com](mailto:proteintech@ptglab.com)  
W: [ptglab.com](http://ptglab.com)

This product is exclusively available under Proteintech Group brand and is not available to purchase from any other manufacturer.

## Données de validation sélectionnées



human heart tissue were subjected to SDS PAGE followed by western blot with 16953-1-AP (MEF2C antibody) at dilution of 1:400 incubated at room temperature for 1.5 hours.



TF-1 cells were subjected to SDS PAGE followed by western blot with 16953-1-AP (MEF2C antibody) at dilution of 1:600 incubated at room temperature for 1.5 hours.