

À des fins de recherche uniquement

Anticorps Polyclonal de lapin anti-MTERF



Numéro de catalogue: 16957-1-AP

2 Publications

Informations de base

Numéro de catalogue: 16957-1-AP	Numéro d'acquisition GenBank: BC000965	Méthode de purification: Purification par affinité contre l'antigène
Taille: 150ul , Concentration: 500 µg/ml by Nanodrop and 287 µg/ml by Bradford method using BSA as the standard;	Identification du gène (NCBI): 7978	Dilutions recommandées: WB 1:500-1:2000
Hôte: Lapin	Nom complet: mitochondrial transcription termination factor	
Isotype: IgG	MW calculé: 46 kDa	
Immunogen Catalog Number: AG10640	MW observés: 31 kDa	

Applications

Applications testées: WB, ELISA	Contrôles positifs: WB : cellules HeLa, cellules Jurkat
Demandes citées: WB	
Spécificité de l'espèce: Humain, rat, souris	
Espèces citées: Humain, souris	

Informations générales

Mitochondrial transcription termination factor (MTERF) also named as Mterf1 is a 399 amino acid protein, which localizes in the mitochondrion and belongs to the mTERF family. MTERF contains three leucine zippers that form a three-stranded coiled-coil that binds to DNA. It has been suggested that only the phosphorylated form of MTERF has transcription termination activity. MTERF plays a central role in the control of mitochondrial rRNA and mRNA synthesis. MTERFD1 is also thought to act as a mitochondrial transcription regulator and is expressed as two isoforms produced by alternative splicing. Using DNA affinity chromatography, a fraction called MTERF was found to be associated with foot-printing capacity, and this contained two polypeptides of 34 and 31 kDa. Moreover, termination-promoting activity appears to reside in the 34-kDa protein. (PMID:7681833).

Publications notables

Autrice	Pubmed ID	Journal	Application
Stanka Matic	29572490	Nat Commun	WB
Jing Geng	26414765	Nat Immunol	WB

Stockage

Stockage:
Stocker à -20°C. Stable pendant un an après l'expédition.
Tampon de stockage:
PBS avec azoture de sodium à 0,02 % et glycérol à 50 % pH 7,3
L'aliquotage n'est pas nécessaire pour le stockage à -20°C

*** Les 20ul contiennent 0,1% de BSA.

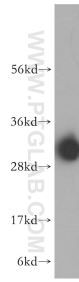
For technical support and original validation data for this product please contact:

T: 1 (888) 4PTGLAB (1-888-478-4522) (toll free in USA), or 1(312) 455-8498 (outside USA)

E: proteintech@ptglab.com
W: ptglab.com

This product is exclusively available under Proteintech Group brand and is not available to purchase from any other manufacturer.

Données de validation sélectionnées



HeLa cells were subjected to SDS PAGE followed by western blot with 16957-1-AP (MTERF antibody) at dilution of 1:400 incubated at room temperature for 1.5 hours.