

À des fins de recherche uniquement

# Anticorps Polyclonal de lapin anti-Connexin-26



Numéro de catalogue: 16960-1-AP

2 Publications

## Informations de base

Numéro de catalogue:

16960-1-AP

Taille:

150ul, Concentration: 260 µg/ml by Nanodrop and 147 µg/ml by Bradford method using BSA as the standard;

Hôte:

Lapin

Isotype:

IgG

Immunogen Catalog Number:

AG10666

Numéro d'acquisition GenBank:

BC017048

Identification du gène (NCBI):

2706

Nom complet:

gap junction protein, beta 2, 26kDa

MW calculé

26 kDa

MW observés:

26 kDa

Méthode de purification:

Purification par affinité contre l'antigène

Dilutions recommandées:

WB 1:500-1:1000

IF 1:50-1:500

## Applications

Applications testées:

IF, WB, ELISA

Demandes citées:

WB

Spécificité de l'espèce:

Humain, rat, souris

Espèces citées:

Humain

Contrôles positifs:

WB : cellules PC-3, tissu hépatique humain

IF : cellules PC-3,

## Informations générales

The gap junctions were first characterized by electron microscopy as regionally specialized structures on plasma membranes of contacting adherent cells. These structures were shown to consist of cell-to-cell channels that facilitate the transfer of ions and small molecules between cells. The gap junction proteins, also known as connexins, purified from fractions of enriched gap junctions from different tissues differ. According to sequence similarities at the nucleotide and amino acid levels, the gap junction proteins are divided into two categories, alpha and beta. Connexin-26 (GJB2) is a beta class gap junction protein. Mutations in the gene for connexin-26 are responsible for as much as 50% of pre-lingual, recessive deafness.

## Publications notables

Autrice	Pubmed ID	Journal	Application
Bo Ling	32471520	Oncol Res	WB
Zhiyang Zhu	31059036	Mol Med Rep	

## Stockage

Stockage:

Stocker à -20°C. Stable pendant un an après l'expédition.

Tampon de stockage:

PBS avec azoture de sodium à 0,02 % et glycérol à 50 % pH 7,3

L'aliquotage n'est pas nécessaire pour le stockage à -20C

\*\*\* Les 20ul contiennent 0,1% de BSA.

For technical support and original validation data for this product please contact:

T: 1 (888) 4PTGLAB (1-888-478-4522) (toll free in USA), or 1(312) 455-8498 (outside USA)

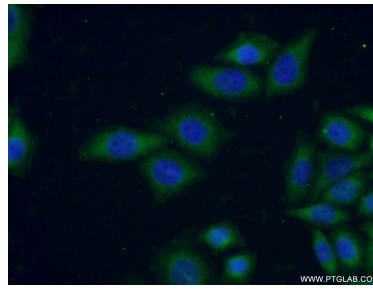
E: [proteintech@ptglab.com](mailto:proteintech@ptglab.com)  
W: [ptglab.com](http://ptglab.com)

This product is exclusively available under Proteintech Group brand and is not available to purchase from any other manufacturer.

## Données de validation sélectionnées



PC-3 cells were subjected to SDS PAGE followed by western blot with 16960-1-AP (Connexin-26 antibody) at dilution of 1:500 incubated at room temperature for 1.5 hours.



Immunofluorescent analysis of (-20°C Ethanol) fixed PC-3 cells using 16960-1-AP (Connexin-26 antibody) at dilution of 1:50 and Alexa Fluor 488-conjugated AffiniPure Goat Anti-Rabbit IgG(H+L).