

À des fins de recherche uniquement

# Anticorps Polyclonal de lapin anti-TBC1D23



Numéro de catalogue: 17002-1-AP

4 Publications

## Informations de base

Numéro de catalogue:  
17002-1-AP

Taille:  
150ul, Concentration: 450 µg/ml by Nanodrop and 247 µg/ml by Bradford method using BSA as the standard;

Hôte:  
Lapin

Isotype:  
IgG

Immunogen Catalog Number:  
AG10697

Numéro d'acquisition GenBank:  
BC010221

Identification du gène (NCBI):  
55773

Nom complet:  
TBC1 domain family, member 23

MW calculé:  
699 aa, 78 kDa

MW observés:  
70-78 kDa

Méthode de purification:  
Purification par affinité contre l'antigène

Dilutions recommandées:  
WB 1:500-1:2000  
IP 0.5-4.0 ug for IP and 1:500-1:1000 for WB  
IHC 1:20-1:200  
IF 1:50-1:500

## Applications

Applications testées:  
IF, IHC, IP, WB, ELISA

Demandes citées:  
IF, IHC, WB

Spécificité de l'espèce:  
Humain

Espèces citées:  
Humain

**Remarque-IHC: il est suggéré de démasquer l'antigène avec un tampon de TE buffer pH 9,0; (\*) A défaut, 'le démasquage de l'antigène peut être 'effectué avec un tampon citrate pH 6,0.**

Contrôles positifs:

WB : cellules HepG2, cellules HeLa

IP : cellules HepG2,

IHC : tissu hépatique humain, tissu ovarien humain, tissu rénal humain, tissu splénique humain, tissu testiculaire humain

IF : cellules HeLa,

## Informations générales

TBC1D23, also named as NS4ATP1, is a gene down-regulated by Pneumocystis infection. Pneumocystis pneumonia is a common opportunistic disease in AIDS patients. (PMID: 20377877) Recently it has been found that TBC1D23 gene is the most frequently mutated in MSI-H cell lines and protein expressions of TBC1D23 in tumors with mutation were down regulated.(PMID: 20824714) This antibody is specific to TBC1D23.

## Publications notables

Autrice	Pubmed ID	Journal	Application
Isaac Marin-Valencia	28823706	Am J Hum Genet	WB,IF
Ekaterina L Ivanova	28823707	Am J Hum Genet	IF
Yao Zhang	34363324	J Cell Mol Med	IHC,WB,IF

## Stockage

Stockage:

Stocker à -20°C. Stable pendant un an après l'expédition.

Tampon de stockage:

PBS avec azoture de sodium à 0,02 % et glycérol à 50 % pH 7,3

L'aliquotage n'est pas nécessaire pour le stockage à -20C

\*\*\* Les 20ul contiennent 0,1% de BSA.

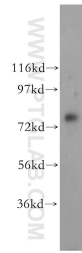
For technical support and original validation data for this product please contact:

T: 1 (888) 4PTGLAB (1-888-478-4522) (toll free in USA), or 1(312) 455-8498 (outside USA)

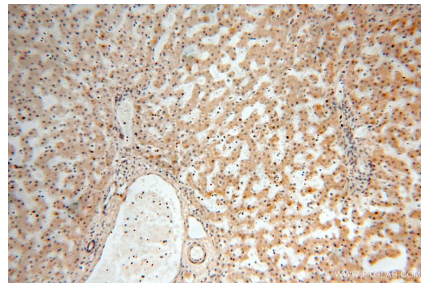
E: proteintech@ptglab.com  
W: ptglab.com

This product is exclusively available under Proteintech Group brand and is not available to purchase from any other manufacturer.

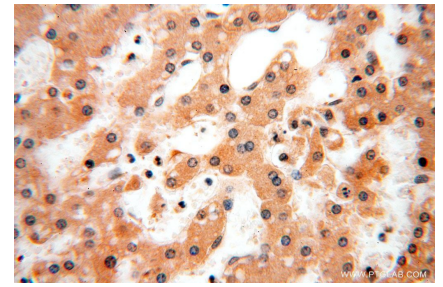
## Données de validation sélectionnées



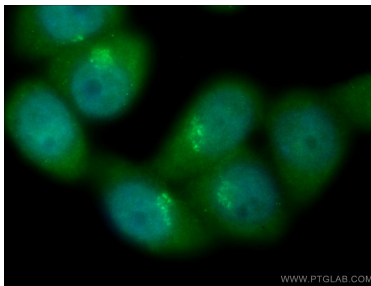
HepG2 cells were subjected to SDS PAGE followed by western blot with 17002-1-AP (TBC1D23 antibody) at dilution of 1:500 incubated at room temperature for 1.5 hours.



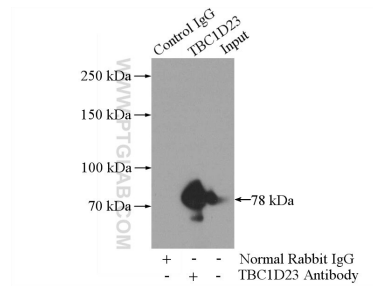
Immunohistochemical analysis of paraffin-embedded human liver using 17002-1-AP (TBC1D23 antibody) at dilution of 1:100 (under 10x lens).



Immunohistochemical analysis of paraffin-embedded human liver using 17002-1-AP (TBC1D23 antibody) at dilution of 1:100 (under 40x lens).



Immunofluorescent analysis of (4% PFA) fixed HeLa cells using 17002-1-AP (TBC1D23 antibody) at dilution of 1:50 and CoraLite488-Conjugated AffiniPure Goat Anti-Rabbit IgG(H+L).



IP Result of anti-TBC1D23 (IP:17002-1-AP, 4 $\mu$ g; Detection:17002-1-AP 1:500) with HepG2 cells lysate 2400 $\mu$ g.