

À des fins de recherche uniquement

Anticorps Polyclonal de lapin anti-MRPS15



Numéro de catalogue: 17006-1-AP

12 Publications

Informations de base

Numéro de catalogue:

17006-1-AP

Taille:

150ul, Concentration: 550 µg/ml by Nanodrop and 300 µg/ml by Bradford method using BSA as the standard;

Hôte:

Lapin

Isotype:

IgG

Immunogen Catalog Number:

AG10702

Numéro d'acquisition GenBank:

BC031336

Identification du gène (NCBI):

64960

Nom complet:

mitochondrial ribosomal protein S15

MW calculé

257 aa, 30 kDa

MW observés:

25-30 kDa

Méthode de purification:

Purification par affinité contre l'antigène

Dilutions recommandées:

WB 1:500-1:2000

IP 0.5-4.0 ug for IP and 1:200-1:1000 for WB

IHC 1:20-1:200

IF 1:50-1:500

Applications

Applications testées:

IF, IHC, IP, WB, ELISA

Demandes citées:

WB

Spécificité de l'espèce:

Humain, rat, souris

Espèces citées:

Humain, souris

Remarque-IHC: il est suggéré de démasquer l'antigène avec un tampon de TE buffer pH 9,0; (*) A défaut, 'le démasquage de l'antigène peut être 'effectué avec un tampon citrate pH 6,0.

Contrôles positifs:

WB : cellules HeLa, cellules MCF-7, cellules Raji, tissu hépatique de souris

IP : tissu cérébral de souris,

IHC : tissu splénique humain,

IF : cellules HepG2,

Informations générales

MRPS15, also named as RPMS15 or DC37, is a 257 amino acid protein, which belongs to the ribosomal protein S15P family. MRPS15 localizes in the Mitochondrion and is a component of the mitochondrial ribosome small subunit (28S) which comprises a 12S rRNA and about 30 distinct proteins. MRPS15 is involved into the mitochondrial proteins biosynthesis and ribosomal biogenesis.

Publications notables

Autrice	Pubmed ID	Journal	Application
Ying Shu	36314841	EMBO J	WB
Luis Daniel Cruz-Zaragoza	34672953	Cell	WB
Ricarda Richter-Dennerlein	27693358	Cell	WB

Stockage

Stockage:

Stocker à -20°C. Stable pendant un an après l'expédition.

Tampon de stockage:

PBS avec azoture de sodium à 0,02 % et glycérol à 50 % pH 7,3

L'aliqotage n'est pas nécessaire pour le stockage à -20C

*** Les 20ul contiennent 0,1% de BSA.

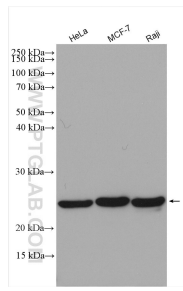
For technical support and original validation data for this product please contact:

T: 1 (888) 4PTGLAB (1-888-478-4522) (toll free in USA), or 1(312) 455-8498 (outside USA)

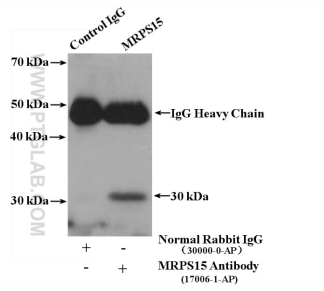
E: proteintech@ptglab.com
W: ptglab.com

This product is exclusively available under Proteintech Group brand and is not available to purchase from any other manufacturer.

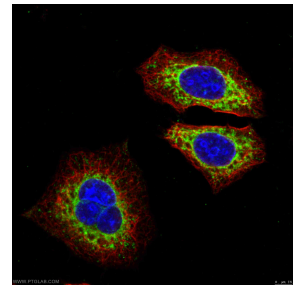
Données de validation sélectionnées



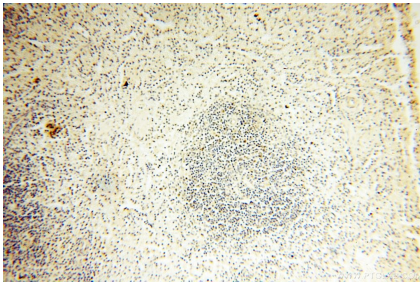
Various lysates were subjected to SDS PAGE followed by western blot with 17006-1-AP (MRPS15 antibody) at dilution of 1:1000 incubated at room temperature for 1.5 hours.



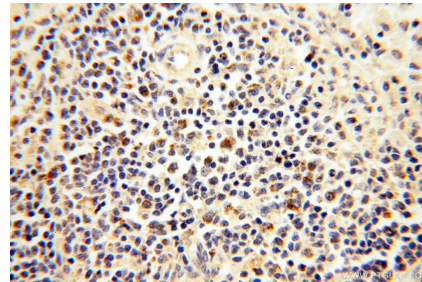
IP result of anti-MRPS15 (IP:17006-1-AP, 4ug; Detection:17006-1-AP 1:300) with mouse brain tissue lysate 3200 ug.



Immunofluorescent analysis of (-20°C Ethanol) fixed HepG2 cells using MRPS15 rabbit poly (17006-1-AP, Green) and KRT18 mouse mAb (66187-1-Ig, Red) at dilution of 1:50, further stained with Alexa Fluor 488-Conjugated AffiniPure Goat Anti-Rabbit IgG(H+L) for 17006-1-AP, and Alexa Fluor 594-conjugated AffiniPure Goat Anti-Mouse IgG (H+L) for 66187-1-Ig.



Immunohistochemical analysis of paraffin-embedded human spleen using 17006-1-AP (MRPS15 antibody) at dilution of 1:100 (under 10x lens).



Immunohistochemical analysis of paraffin-embedded human spleen using 17006-1-AP (MRPS15 antibody) at dilution of 1:100 (under 40x lens).