

À des fins de recherche uniquement

Anticorps Polyclonal de lapin anti-RECQL4



Numéro de catalogue: 17008-1-AP

Phare

5 Publications

Informations de base

Numéro de catalogue:

17008-1-AP

Taille:

150ul, Concentration: 450 µg/ml by Nanodrop and 233 µg/ml by Bradford method using BSA as the standard;

Hôte:

Lapin

Isotype:

IgG

Immunogen Catalog Number:

AG10707

Numéro d'acquisition GenBank:

BC013277

Identification du gène (NCBI):

9401

Nom complet:

RecQ protein-like 4

MW calculé

1208 aa, 133 kDa

MW observés:

145-150 kDa

Méthode de purification:

Purification par affinité contre l'antigène

Dilutions recommandées:

WB 1:1000-1:5000

IP 0.5-4.0 ug for IP and 1:500-1:2000 for WB

IHC 1:50-1:500

IF 1:200-1:800

Applications

Applications testées:

IF, IHC, IP, WB, ELISA

Demandes citées:

IF, IHC, IP, WB

Spécificité de l'espèce:

Humain

Espèces citées:

Humain

Remarque-IHC: il est suggéré de démasquer l'antigène avec un tampon de TE buffer pH 9,0; (*) A défaut, 'le démasquage de l'antigène peut être 'effectué avec un tampon citrate pH 6,0.

Contrôles positifs:

WB : cellules HeLa, cellules HepG2

IP : cellules HeLa,

IHC : tissu de gliome humain, tissu rénal humain

IF : cellules HeLa,

Informations générales

RECQ protein-like 4 (RECQL4), which has helicase domains contain 7 consensus motifs in the middle, is a gene responsible for Werner syndrome and Bloom syndrome. It forms a stable complex with UBR1 and UBR2, which has a DNA-stimulated ATPase activity. RECQL4 may involve in repairment of DNA damage by interaction with APE1 and FEN1, key participants in base excision repair. This is a rabbit polyclonal antibody raised against part of C-terminal of RECQL4 of human origin. The calculated molecular weight of EIF3B is 133 kDa, but the modified EIF3B protein is about 145-150 kDa.

Publications notables

Autrice	Pubmed ID	Journal	Application
Jiewei Wang	34822842	J Biol Chem	WB
Sebastian Veith	31296950	Sci Rep	IF
Guosheng Lyu	33628589	Cancer Biol Med	IHC

Stockage

Stockage:

Stocker à -20°C. Stable pendant un an après l'expédition.

Tampon de stockage:

PBS avec azoture de sodium à 0,02 % et glycérol à 50 % pH 7,3

L'aliquotage n'est pas nécessaire pour le stockage à -20C

*** Les 20ul contiennent 0,1% de BSA.

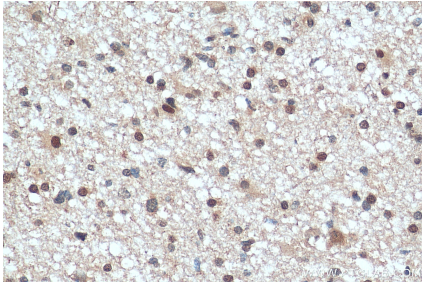
For technical support and original validation data for this product please contact:

T: 1 (888) 4PTGLAB (1-888-478-4522) (toll free in USA), or 1(312) 455-8498 (outside USA)

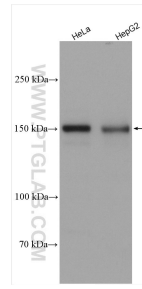
E: proteintech@ptglab.com
W: ptglab.com

This product is exclusively available under Proteintech Group brand and is not available to purchase from any other manufacturer.

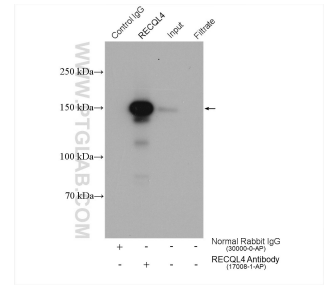
Données de validation sélectionnées



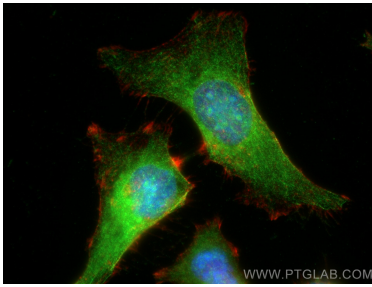
Immunohistochemical analysis of paraffin-embedded human gliomas tissue slide using 17008-1-AP (RECQL4 antibody) at dilution of 1:200 (under 40x lens). Heat mediated antigen retrieval with Tris-EDTA buffer (pH 9.0).



Various lysates were subjected to SDS PAGE followed by western blot with 17008-1-AP (RECQL4 antibody) at dilution of 1:2500 incubated at room temperature for 1.5 hours.



IP result of anti-RECQL4 (IP: 17008-1-AP, 4ug; Detection: 17008-1-AP 1:1000) with HeLa cells lysate 1880 ug.



Immunofluorescent analysis of (-20°C Ethanol) fixed HeLa cells using RECQL4 antibody (17008-1-AP) at dilution of 1:400 and CoraLite®488-Conjugated AffiniPure Goat Anti-Rabbit IgG(H+L), CL594-Phalloidin (red).