

À des fins de recherche uniquement

Anticorps Polyclonal de lapin anti-PPM1F



Numéro de catalogue: 17020-1-AP

Phare

1 Publications

Informations de base

Numéro de catalogue: 17020-1-AP	Numéro d'acquisition GenBank: BC071989	Méthode de purification: Purification par affinité contre l'antigène
Taille: 150ul, Concentration: 500 µg/ml by Nanodrop and 333 µg/ml by Bradford method using BSA as the standard;	Identification du gène (NCBI): 9647	Dilutions recommandées: WB 1:1000-1:3000 IP 0.5-4.0 ug for IP and 1:500-1:1000 for WB IF 1:50-1:500
Hôte: Lapin	Nom complet: protein phosphatase 1F (PP2C domain containing)	
Isotype: IgG	MW calculé: 453 aa, 50 kDa	
Immunogen Catalog Number: AG10186	MW observés: 50 kDa	

Applications

Applications testées:

IF, IP, WB, ELISA

Demandes citées:

WB

Spécificité de l'espèce:

Humain

Espèces citées:

souris

Contrôles positifs:

WB : cellules MCF-7, cellules HeLa, cellules HepG2, cellules K-562, cellules L02, tissu hépatique humain

IP : cellules MCF-7,

IF : cellules HepG2,

Informations générales

Mg²⁺/Mn²⁺-dependent protein phosphatase 1F (PPM1F) belongs to the PP2C family of Ser/Thr protein phosphatases and is the critical enzyme responsible for dephosphorylating the threonine motif. PPM1F is ubiquitous in various tissues and organs (PMID: 26498692). High expression of PPM1F was positively associated with poor survival and tumor recurrence in patients with cancers and PPM1F might be a potential biomarker in HCC patients (PMID: 30470261).

Publications notables

Autrice	Pubmed ID	Journal	Application
Tanja M Grimm	33119040	J Cell Biol	WB

Stockage

Stockage:

Stocker à -20°C. Stable pendant un an après l'expédition.

Tampon de stockage:

PBS avec azoture de sodium à 0,02 % et glycérol à 50 % pH 7,3

L'aliquotage n'est pas nécessaire pour le stockage à -20C

*** Les 20ul contiennent 0,1% de BSA.

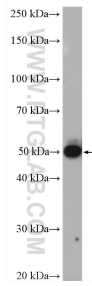
For technical support and original validation data for this product please contact:

T: 1 (888) 4PTGLAB (1-888-478-4522) (toll free in USA), or 1(312) 455-8498 (outside USA)

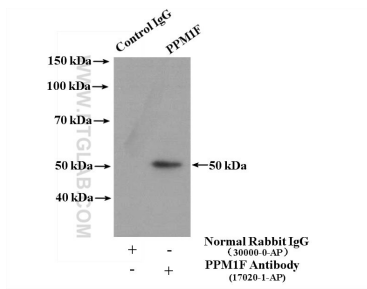
E: proteintech@ptglab.com
W: ptglab.com

This product is exclusively available under Proteintech Group brand and is not available to purchase from any other manufacturer.

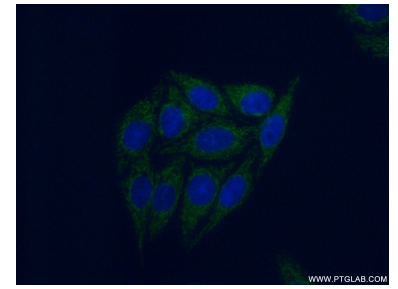
Données de validation sélectionnées



MCF-7 cells were subjected to SDS PAGE followed by western blot with 17020-1-AP (PPM1F antibody) at dilution of 1:2000 incubated at room temperature for 1.5 hours.



IP Result of anti-PPM1F (IP:17020-1-AP, 4ug; Detection:17020-1-AP 1:700) with MCF-7 cells lysate 2800ug.



Immunofluorescent analysis of (-20°C Ethanol) fixed HepG2 cells using 17020-1-AP (PPM1F antibody) at dilution of 1:50 and Alexa Fluor 488-conjugated AffiniPure Goat Anti-Rabbit IgG(H+L).