

À des fins de recherche uniquement

Anticorps Polyclonal de lapin anti-GEFT



Numéro de catalogue: 17028-1-AP

Informations de base

Numéro de catalogue:
17028-1-AP

Taille:
150ul, Concentration: 240 µg/ml by Nanodrop and 133 µg/ml by Bradford method using BSA as the standard;

Hôte:
Lapin

Isotype:
IgG

Immunogen Catalog Number:
AG10436

Numéro d'acquisition GenBank:
BC012860

Identification du gène (NCBI):
115557

Nom complet:
RhoA/RAC/CDC42 exchange factor

MW calculé
64 kDa

MW observés:
64 kDa

Méthode de purification:
Purification par affinité contre l'antigène

Dilutions recommandées:
WB 1:200-1:1000
IP 0.5-4.0 ug for IP and 1:200-1:1000 for WB

Applications

Applications testées:
IP, WB, ELISA

Spécificité de l'espèce:
Humain, rat, souris

Contrôles positifs:

WB : tissu cérébral humain,

IP : cellules HEK-293,

Informations générales

GEFT, also named as p63RhoGEF, may play a role in actin cytoskeleton reorganization in different tissues since its activation induces formation of actin stress fibers. It works as a guanine nucleotide exchange factor for Rho family of small GTPases. GETF links specifically G alpha q/11-coupled receptors to RHOA activation. GEFT may be an important regulator of processes involved in axon and dendrite formation. In neurons seems to be an exchange factor primarily for RAC1. It is involved in skeletal myogenesis. GEFT is expressed as three isoforms (64, 53 and 68 kDa).

Stockage

Stockage:

Stocker à -20°C. Stable pendant un an après l'expédition.

Tampon de stockage:

PBS avec azoture de sodium à 0,02 % et glycérol à 50 % pH 7,3

L'aliquotage n'est pas nécessaire pour le stockage à -20C

*** Les 20ul contiennent 0,1% de BSA.

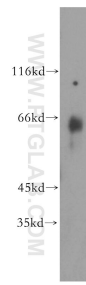
For technical support and original validation data for this product please contact:

T: 1 (888) 4PTGLAB (1-888-478-4522) (toll free in USA), or 1(312) 455-8498 (outside USA)

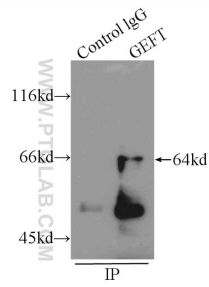
E: proteintech@ptglab.com
W: ptglab.com

This product is exclusively available under Proteintech Group brand and is not available to purchase from any other manufacturer.

Données de validation sélectionnées



human brain tissue were subjected to SDS PAGE followed by western blot with 17028-1-AP (GEFT antibody) at dilution of 1:300 incubated at room temperature for 1.5 hours.



IP Result of anti-GEFT (IP:17028-1-AP, 4ug; Detection:17028-1-AP 1:400) with HEK-293 cells lysate 2000ug.