

À des fins de recherche uniquement

Anticorps Polyclonal de lapin anti-GRK5



Numéro de catalogue: 17032-1-AP

Phare

7 Publications

Informations de base

Numéro de catalogue:
17032-1-AP

Taille:
150ul, Concentration: 400 µg/ml by Nanodrop and 280 µg/ml by Bradford method using BSA as the standard;

Hôte:
Lapin

Isotype:
IgG

Immunogen Catalog Number:
AG10511

Numéro d'acquisition GenBank:
BC064506

Identification du gène (NCBI):
2869

Nom complet:
G protein-coupled receptor kinase 5

MW calculé
590 aa, 68 kDa

MW observés:
70 kDa

Méthode de purification:
Purification par affinité contre l'antigène

Dilutions recommandées:
WB 1:1000-1:4000
IHC 1:50-1:500

Applications

Applications testées:
IHC, WB, ELISA

Demandes citées:
IF, IHC, WB

Spécificité de l'espèce:
Humain, rat, souris

Espèces citées:
Humain, souris

Remarque-IHC: il est suggéré de démasquer l'antigène avec un tampon de TE buffer pH 9,0; (*) A défaut, 'le démasquage de l'antigène peut être 'effectué avec un tampon citrate pH 6,0.

Contrôles positifs:

WB : cellules HeLa, cellules HepG2, tissu de muscle squelettique de rat, tissu de muscle squelettique de souris, tissu de muscle squelettique humain

IHC : tissu de muscle squelettique humain, tissu cardiaque de souris

Informations générales

GRK5, also named as GPRK5, belongs to the protein kinase superfamily, AGC Ser/Thr protein kinase family and GPRK subfamily. It is Serine/threonine kinase that phosphorylates preferentially the activated forms of a variety of G-protein-coupled receptors (GPCRs). Phosphorylation of ARRB1 by GRK5 inhibits G-protein independent MAPK1/MAPK3 signaling downstream of 5HT₄-receptors. GRK5 is crucial for proper neuronal morphogenesis and the establishment of functional neuronal circuitry.

Publications notables

Autrice	Pubmed ID	Journal	Application
Masakazu Toya	34006987	Sci Rep	IHC,IF
Takuya Sueishi	31696655	Arthritis Rheumatol	IHC,IF
Xiaobai He	32112783	Biochim Biophys Acta Mol Cell Res	WB

Stockage

Stockage:

Stocker à -20°C. Stable pendant un an après l'expédition.

Tampon de stockage:

PBS avec azoture de sodium à 0,02 % et glycérol à 50 % pH 7,3

L'aliquotage n'est pas nécessaire pour le stockage à -20C

*** Les 20ul contiennent 0,1% de BSA.

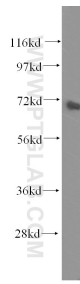
For technical support and original validation data for this product please contact:

T: 1 (888) 4PTGLAB (1-888-478-4522) (toll free in USA), or 1(312) 455-8498 (outside USA)

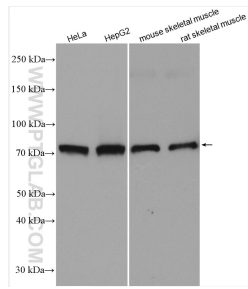
E: proteintech@ptglab.com
W: ptglab.com

This product is exclusively available under Proteintech Group brand and is not available to purchase from any other manufacturer.

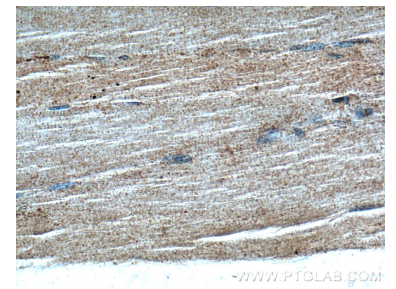
Données de validation sélectionnées



human skeletal muscle tissue were subjected to SDS PAGE followed by western blot with 17032-1-AP (GRK5 antibody) at dilution of 1:400 incubated at room temperature for 1.5 hours.



Various lysates were subjected to SDS PAGE followed by western blot with 17032-1-AP (GRK5 antibody) at dilution of 1:2000 incubated at room temperature for 1.5 hours.



Immunohistochemical analysis of paraffin-embedded human skeletal muscle tissue slide using 17032-1-AP (GRK5 Antibody) at dilution of 1:200 (under 40x lens).



Immunohistochemical analysis of paraffin-embedded human skeletal muscle tissue slide using 17032-1-AP (GRK5 Antibody) at dilution of 1:200 (under 10x lens).