

À des fins de recherche uniquement

Anticorps Polyclonal de lapin anti-RWDD1



Numéro de catalogue: 17036-1-AP

1 Publications

Informations de base

Numéro de catalogue:
17036-1-AP

Taille:
150ul, Concentration: 300 µg/ml by Nanodrop and 140 µg/ml by Bradford method using BSA as the standard;

Hôte:
Lapin

Isotype:
IgG

Immunogen Catalog Number:
AG10525

Numéro d'acquisition GenBank:
BC015802

Identification du gène (NCBI):
51389

Nom complet:
RWD domain containing 1

MW calculé
243 aa, 28 kDa

MW observés:
28-36 kDa

Méthode de purification:
Purification par affinité contre l'antigène

Dilutions recommandées:
WB 1:500-1:3000
IP 0.5-4.0 ug for IP and 1:200-1:1000 for WB

Applications

Applications testées:
IP, WB, ELISA

Demandes citées:
IHC, WB

Spécificité de l'espèce:
Humain, rat, souris

Espèces citées:
souris

Contrôles positifs:

WB : cellules HEK-293, cellules HeLa, cellules Jurkat, tissu de thymus de rat, tissu de thymus de souris

IP : tissu de thymus de souris,

Informations générales

RWDD1(RWD domain-containing protein 1) is also named as DFRP2(DRG family-regulatory protein 2) and belongs to the RWDD1/GIR2 family. RWDD1 is a thymus aging-related protein which contains an RWD domain at its N-terminus and it is expressed in both thymocytes and thymic epithelial cells and located primarily in the cytoplasm. This protein expression in thymus is decreased in aged and oxidatively stressed mice (PMID:18954556). RWDD1 has a calculated molecular mass of 28 kDa, and apparent molecular mass of 32-36 kDa due to its high acidic amino acid composition that results in the slowed migration behavior in electrophoresis (PMID: 30278355, 18954556).

Publications notables

Autrice	Pubmed ID	Journal	Application
Gr?tsch Helga H	22406838	Mol Cell Endocrinol	WB,IHC

Stockage

Stockage:

Stocker à -20°C. Stable pendant un an après l'expédition.

Tampon de stockage:

PBS avec azoture de sodium à 0,02 % et glycérol à 50 % pH 7,3

L'aliquotage n'est pas nécessaire pour le stockage à -20C

*** Les 20ul contiennent 0,1% de BSA.

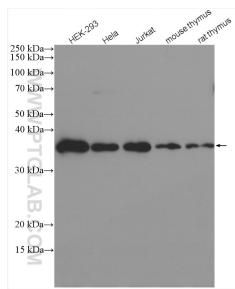
For technical support and original validation data for this product please contact:

T: 1 (888) 4PTGLAB (1-888-478-4522) (toll free in USA), or 1(312) 455-8498 (outside USA)

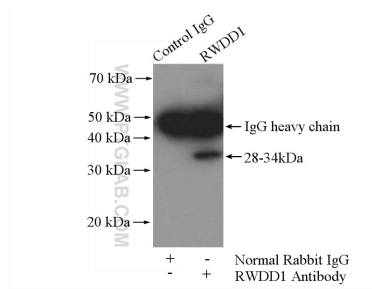
E: proteintech@ptglab.com
W: ptglab.com

This product is exclusively available under Proteintech Group brand and is not available to purchase from any other manufacturer.

Données de validation sélectionnées



Various lysates were subjected to SDS PAGE followed by western blot with 17036-1-AP (RWDD1 antibody) at dilution of 1:1500 incubated at room temperature for 1.5 hours.



IP Result of anti-RWDD1 (IP:17036-1-AP, 4ug; Detection:17036-1-AP 1:300) with mouse thymus tissue lysate 2800ug.