

À des fins de recherche uniquement

Anticorps Polyclonal de lapin anti-METAP2



Numéro de catalogue: 17040-1-AP

1 Publications

Informations de base

Numéro de catalogue:

17040-1-AP

Taille:

150ul, Concentration: 700 µg/ml by Nanodrop and 320 µg/ml by Bradford method using BSA as the standard;

Hôte:

Lapin

Isotype:

IgG

Immunogen Catalog Number:

AG10564

Numéro d'acquisition GenBank:

BC013782

Identification du gène (NCBI):

10988

Nom complet:

methionyl aminopeptidase 2

MW calculé

478 aa, 53 kDa

MW observés:

67 kDa

Méthode de purification:

Purification par affinité contre l'antigène

Dilutions recommandées:

WB 1:500-1:1000

IP 0.5-4.0 ug for IP and 1:200-1:1000 for WB

IF 1:50-1:500

Applications

Applications testées:

IF, IP, WB, ELISA

Demandes citées:

WB

Spécificité de l'espèce:

Humain, rat, souris

Espèces citées:

souris

Contrôles positifs:

WB : cellules HepG2, cellules MCF-7, tissu pancréatique de souris, tissu testiculaire de souris

IP : cellules MCF-7,

IF : cellules HepG2,

Informations générales

MetAP2, also known as MAP2, P67EIF2 or p67, is one of the three known methionine aminopeptidases responsible for the removal of the N-terminal translation initiator methionine from newly synthesized proteins, which is a critical step in protein maturation (PMID: 27692546, 16568094). The enzyme binds two cobalt or manganese ions in its active site (PMID: 11524009, 12718546). As higher MetAP2 expression was observed in tumor (mesothelioma, neuroblastoma, and colorectal carcinoma) cells compared with normal cells, the enzyme serves as a target for anti-angiogenic compounds of natural origin, such as fumagillin and ovalicin (PMID: 11485930, 15927358, 15102683, 9224570). Selective inhibition of MetAP2 stops vascularization and tumor growth in animal models (PMID: 12118091). MetAP2 has 3 isoforms with molecular mass of 50-53 kDa and apparent molecular mass 67 kD.

Publications notables

Autrice	Pubmed ID	Journal	Application
Kotaro Fujii	30576652	Mol Cell	WB

Stockage

Stockage:

Stocker à -20°C. Stable pendant un an après l'expédition.

Tampon de stockage:

PBS avec azoture de sodium à 0,02 % et glycérol à 50 % pH 7,3

L'aliquotage n'est pas nécessaire pour le stockage à -20C

*** Les 20ul contiennent 0,1% de BSA.

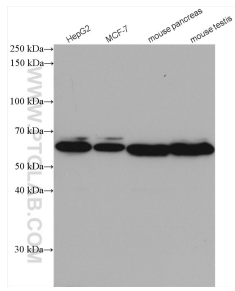
For technical support and original validation data for this product please contact:

T: 1 (888) 4PTGLAB (1-888-478-4522) (toll free in USA), or 1(312) 455-8498 (outside USA)

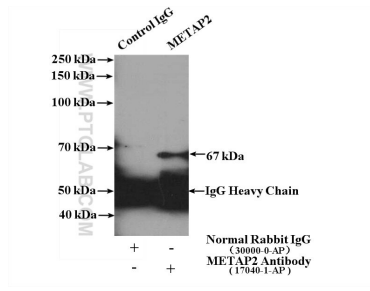
E: proteintech@ptglab.com
W: ptglab.com

This product is exclusively available under Proteintech Group brand and is not available to purchase from any other manufacturer.

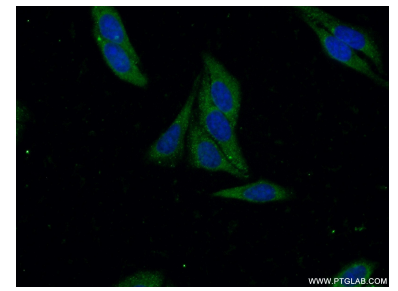
Données de validation sélectionnées



Various lysates were subjected to SDS PAGE followed by western blot with 17040-1-AP (METAP2 antibody) at dilution of 1:500 incubated at room temperature for 1.5 hours.



IP Result of anti-METAP2 (IP:17040-1-AP, 4 μ g; Detection:17040-1-AP 1:300) with MCF-7 cells lysate 3200 μ g.



Immunofluorescent analysis of (-20°C Ethanol) fixed HepG2 cells using 17040-1-AP (METAP2 antibody) at dilution of 1:50 and Alexa Fluor 488-conjugated AffiniPure Goat Anti-Rabbit IgG(H+L).