

À des fins de recherche uniquement

# Anticorps Polyclonal de lapin anti-STARD10



Numéro de catalogue: 17048-1-AP

## Informations de base

<b>Numéro de catalogue:</b> 17048-1-AP	<b>Numéro d'acquisition GenBank:</b> BC007919	<b>Méthode de purification:</b> Purification par affinité contre l'antigène
<b>Taille:</b> 150ul, Concentration: 600 µg/ml by Nanodrop and 267 µg/ml by Bradford method using BSA as the standard;	<b>Identification du gène (NCBI):</b> 10809	<b>Dilutions recommandées:</b> WB 1:1000-1:8000 IP 0.5-4.0 ug for IP and 1:200-1:1000 for WB IHC 1:20-1:200
<b>Hôte:</b> Lapin	<b>Nom complet:</b> StAR-related lipid transfer (START) domain containing 10	
<b>Isotype:</b> IgG	<b>MW calculé:</b> 291 aa, 33 kDa	
<b>Immunogen Catalog Number:</b> AG10705	<b>MW observés:</b> 35 kDa	

## Applications

<b>Applications testées:</b> IHC, IP, WB, ELISA	<b>Contrôles positifs:</b> WB : cellules MCF-7, cellules T-47D IP : cellules HepG2, IHC : tissu hépatique humain,
<b>Spécificité de l'espèce:</b> Humain	
<b>Remarque-IHC: il est suggéré de démasquer l'antigène avec un tampon de TE buffer pH 9.0; (*) À défaut, le démasquage de l'antigène peut être effectué avec un tampon citrate pH 6,0.</b>	

## Informations générales

STARD10 (START domain-containing protein 10; also known as PCTP-like protein) was firstly identified as a 40 kDa protein associated with the maturation of sperm (10819773). It is highly expressed in liver and responsible to transfer phosphatidylcholine. STARD10 has also been reported to be overexpressed in breast tumors, suggesting its possible role in tumorigenesis. This antibody detected duplicate bands between 35-40 kDa in MCF7 and HepG2 cells. The similar expression pattern of STARD10 was also observed by other scientists, while the exact reason is not clear (15150109).

## Stockage

**Stockage:**  
Stocker à -20°C. Stable pendant un an après l'expédition.  
**Tampon de stockage:**  
PBS avec azoture de sodium à 0,02 % et glycérol à 50 % pH 7,3  
L'aliquotage n'est pas nécessaire pour le stockage à -20C

\*\*\* Les 20ul contiennent 0,1% de BSA.

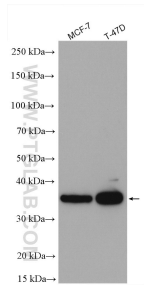
For technical support and original validation data for this product please contact:

T: 1 (888) 4PTGLAB (1-888-478-4522) (toll free in USA), or 1(312) 455-8498 (outside USA)

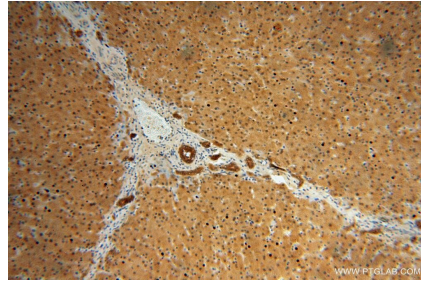
E: proteintech@ptglab.com  
W: ptglab.com

This product is exclusively available under Proteintech Group brand and is not available to purchase from any other manufacturer.

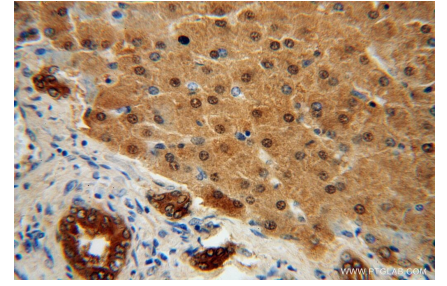
## Données de validation sélectionnées



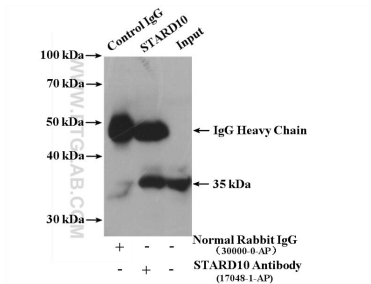
Various lysates were subjected to SDS PAGE followed by western blot with 17048-1-AP (STARD10 antibody) at dilution of 1:4000 incubated at room temperature for 1.5 hours.



Immunohistochemical analysis of paraffin-embedded human liver using 17048-1-AP (STARD10 antibody) at dilution of 1:100 (under 10x lens).



Immunohistochemical analysis of paraffin-embedded human liver using 17048-1-AP (STARD10 antibody) at dilution of 1:100 (under 40x lens).



IP result of anti-STARD10 (IP:17048-1-AP, 4ug; Detection:17048-1-AP 1:300) with HepG2 cells lysate 3400 ug.