

À des fins de recherche uniquement

Anticorps Polyclonal de lapin anti-ARL8A



Numéro de catalogue: 17060-1-AP

Phare

4 Publications

Informations de base

Numéro de catalogue:

17060-1-AP

Numéro d'acquisition GenBank:

BC015408

Méthode de purification:

Purification par affinité contre l'antigène

Taille:

150ul, Concentration: 200 µg/ml by Nanodrop and 200 µg/ml by Bradford method using BSA as the standard;

Identification du gène (NCBI):

127829

Dilutions recommandées:

WB 1:500-1:1000
IP 0.5-4.0 ug for IP and 1:500-1:1000 for WB

Hôte:

Lapin

Nom complet:

ADP-ribosylation factor-like 8A

MW calculé

186 aa, 21 kDa

Isotype:

IgG

MW observés:

22 kDa

Immunogen Catalog Number:

AG10788

Applications

Applications testées:

IP, WB, ELISA

Contrôles positifs:

WB : tissu cérébral de souris, cellules HeLa, cellules HepG2

Demandes citées:

IF, WB

IP : tissu cérébral de souris,

Spécificité de l'espèce:

Humain, souris

Espèces citées:

Humain, rat

Informations générales

ARL8A (ADP-ribosylation factor-like protein 8A) is also named as ARL10B, GIE2 and belongs to the small GTPase superfamily. ARL8A is localized to lysosomes in mammalian cells (PMID: 16537643). In neurons, ARL8A mediates the anterograde axonal long-range transport of presynaptic lysosome-related vesicles that are required for presynaptic biogenesis and synaptic function. ARL8A is upregulated in many cancers such as endometrial cancer (PMID: 32070877), colorectal cancer (PMID: 30546056) and inflammatory breast cancer (PMID: 27648361), and has been associated with poor survival outcomes. ARL8A has a calculated molecular weight of 21 kDa.

Publications notables

Autrice	Pubmed ID	Journal	Application
Tal Keren-Kaplan	33232665	Curr Biol	WB
Tal Keren-Kaplan	35314674	Nat Commun	WB
Jessica J A Hummel	34287616	J Cell Biol	IF

Stockage

Stockage:

Stocker à -20°C. Stable pendant un an après l'expédition.

Tampon de stockage:

PBS avec azoture de sodium à 0,02 % et glycérol à 50 % pH 7,3

L'aliquotage n'est pas nécessaire pour le stockage à -20C

*** Les 20ul contiennent 0,1% de BSA.

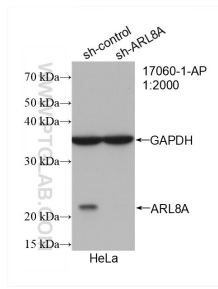
For technical support and original validation data for this product please contact:

T: 1 (888) 4PTGLAB (1-888-478-4522) (toll free in USA), or 1(312) 455-8498 (outside USA)

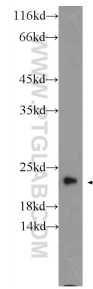
E: proteintech@ptglab.com
W: ptglab.com

This product is exclusively available under Proteintech Group brand and is not available to purchase from any other manufacturer.

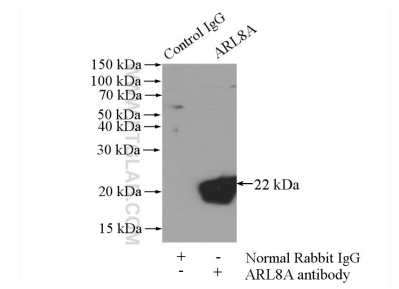
Données de validation sélectionnées



WB result of ARL8A antibody (17060-1-AP; 1:2000; incubated at room temperature for 1.5 hours) with sh-Control and sh-ARL8A transfected HeLa cells.



mouse brain tissue were subjected to SDS PAGE followed by western blot with 17060-1-AP (ARL8A Antibody) at dilution of 1:600 incubated at room temperature for 1.5 hours.



IP Result of anti-ARL8A (IP:17060-1-AP, 4ug; Detection:17060-1-AP 1:600) with mouse brain tissue lysate 3440ug.