

À des fins de recherche uniquement

Anticorps Polyclonal de lapin anti-NFE2L1



Numéro de catalogue: 17062-1-AP

2 Publications

Informations de base

Numéro de catalogue: 17062-1-AP	Numéro d'acquisition GenBank: BC010623	Méthode de purification: Purification par affinité contre l'antigène
Taille: 150ul , Concentration: 240 µg/ml by Nanodrop and 133 µg/ml by Bradford method using BSA as the standard;	Identification du gène (NCBI): 4779	Dilutions recommandées: WB 1:500-1:1000
Hôte: Lapin	Nom complet: nuclear factor (erythroid-derived 2)-like 1	
Isotype: IgG	MW calculé: 772 aa, 85 kDa	
Immunogen Catalog Number: AG10832	MW observés: 65 kDa	

Applications

Applications testées: WB, ELISA	Contrôles positifs: WB : cellules HEK-293, cellules NIH/3T3
Demandes citées: IHC, WB	
Spécificité de l'espèce: Humain, souris	
Espèces citées: Humain, rat	

Informations générales

NFE2L1, also named as HBZ17, NRF1, TCF11 and LCR-F1, belongs to the bZIP family and CNC subfamily. It activates erythroid-specific, globin gene expression. NFE2L1 is involved in mediating ascorbic acid-induced osterix expression and osteoblast differentiation via binding to the antioxidant response element of the osterix promoter. NFE2L1, produced by osteoblasts, is involved in regulating osterix expression, osteoblast differentiation, and bone formation. (PMID:19887580). This antibody is a rabbit polyclonal antibody raised against residues near the C terminus of human ESRRG.

Publications notables

Autrice	Pubmed ID	Journal	Application
Shuai Wang	32188015	Int J Mol Sci	WB
Jie Xing	37243831	Stem Cell Rev Rep	WB, IHC

Stockage

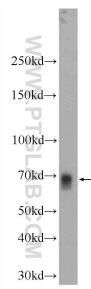
Stockage:
Stocker à -20°C. Stable pendant un an après l'expédition.
Tampon de stockage:
PBS avec azoture de sodium à 0,02 % et glycérol à 50 % pH 7,3
L'aliquotage n'est pas nécessaire pour le stockage à -20C

*** Les 20ul contiennent 0,1% de BSA.

For technical support and original validation data for this product please contact:
T: 1 (888) 4PTGLAB (1-888-478-4522) (toll free in USA), or 1(312) 455-8498 (outside USA)
E: proteintech@ptglab.com
W: ptglab.com

This product is exclusively available under Proteintech Group brand and is not available to purchase from any other manufacturer.

Données de validation sélectionnées



HEK-293 cells were subjected to SDS PAGE followed by western blot with 17062-1-AP (NFE2L1 Antibody) at dilution of 1:600 incubated at room temperature for 1.5 hours.