

À des fins de recherche uniquement

Anticorps Polyclonal de lapin anti-LZTFL1



Numéro de catalogue: 17073-1-AP

Phare

4 Publications

Informations de base

Numéro de catalogue:
17073-1-AP

Taille:
150ul, Concentration: 400 µg/ml by Nanodrop and 233 µg/ml by Bradford method using BSA as the standard;

Hôte:
Lapin

Isotype:
IgG

Immunogen Catalog Number:
AG10919

Numéro d'acquisition GenBank:
BC025988

Identification du gène (NCBI):
54585

Nom complet:
leucine zipper transcription factor-like 1

MW calculé:
299 aa, 35 kDa

MW observés:
35 kDa

Méthode de purification:
Purification par affinité contre l'antigène

Dilutions recommandées:
WB 1:2000-1:12000
IHC 1:20-1:200
IF 1:50-1:500

Applications

Applications testées:
IF, IHC, WB, ELISA

Demandes citées:
IF, IHC, IP, WB

Spécificité de l'espèce:
Humain, rat, souris

Espèces citées:
Humain, souris

Remarque-IHC: il est suggéré de démasquer l'antigène avec un tampon de TE buffer pH 9,0; (*) À défaut, 'le démasquage de l'antigène peut être 'effectué avec un tampon citrate pH 6,0.

Contrôles positifs:

WB : cellules HEK-293, cellules HeLa, cellules HepG2, cellules U-251, tissu testiculaire de rat, tissu testiculaire de souris

IHC : tissu cardiaque humain, tissu cardiaque de rat, tissu cardiaque de souris, tissu de côlon humain, tissu d'intestin grêle de rat, tissu d'intestin grêle de souris, tissu d'intestin grêle humain, tissu pulmonaire de souris, tissu pulmonaire humain, tissu testiculaire de rat, tissu testiculaire de souris, tissu testiculaire humain

IF : cellules HepG2,

Informations générales

LZTFL1 belongs to the LZTFL1 family. It is an important regulator of BBSome ciliary trafficking and hedgehog signaling. LZTFL1 regulates Ciliary Trafficking of the BBSome and Smoothened.(PMID:22072986)

Publications notables

Autrice	Pubmed ID	Journal	Application
Shichao Duan	33241915	EMBO J	WB,IF
Thibaut Eguether	25446516	Dev Cell	WB,IF
Paurav B Desai	32435793	J Cell Biol	IF

Stockage

Stockage:

Stocker à -20°C. Stable pendant un an après l'expédition.

Tampon de stockage:

PBS avec azoture de sodium à 0,02 % et glycérol à 50 % pH 7,3

L'aliquotage n'est pas nécessaire pour le stockage à -20C

*** Les 20ul contiennent 0,1% de BSA.

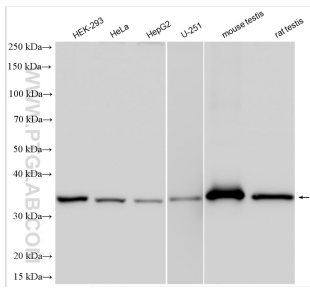
For technical support and original validation data for this product please contact:

T: 1 (888) 4PTGLAB (1-888-478-4522) (toll free in USA), or 1(312) 455-8498 (outside USA)

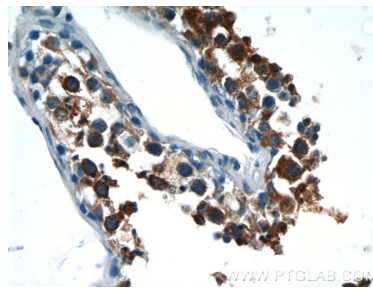
E: proteintech@ptglab.com
W: ptglab.com

This product is exclusively available under Proteintech Group brand and is not available to purchase from any other manufacturer.

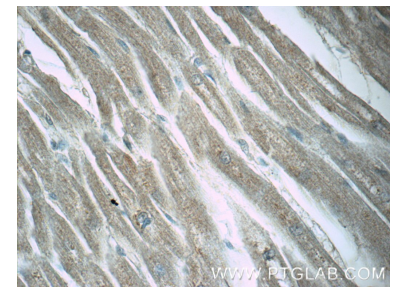
Données de validation sélectionnées



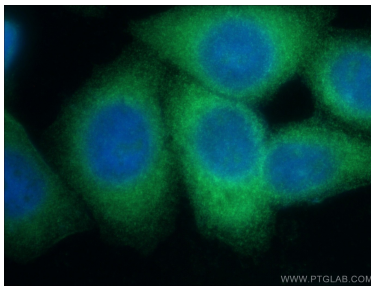
Various lysates were subjected to SDS PAGE followed by western blot with 17073-1-AP (LZTFL1 antibody) at dilution of 1:6000 incubated at room temperature for 1.5 hours.



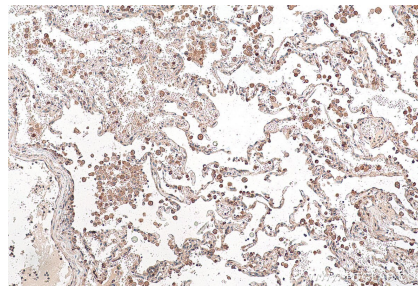
Immunohistochemical analysis of paraffin-embedded human testis tissue slide using 17073-1-AP (LZTFL1 Antibody) at dilution of 1:50 (under 40x lens).



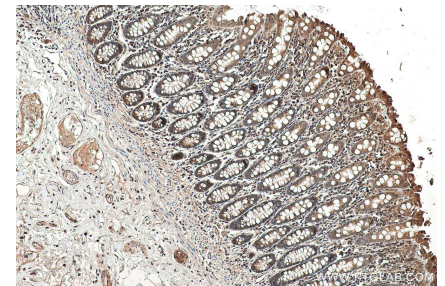
Immunohistochemical analysis of paraffin-embedded human heart tissue slide using 17073-1-AP (LZTFL1 Antibody) at dilution of 1:50 (under 40x lens).



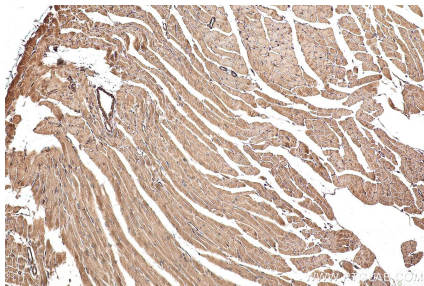
Immunofluorescent analysis of (-20°C Ethanol) fixed HepG2 cells using 17073-1-AP (LZTFL1 antibody) at dilution of 1:50 and Alexa Fluor 488-conjugated AffiniPure Goat Anti-Rabbit IgG(H+L).



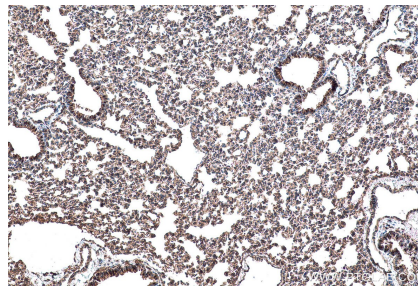
Immunohistochemical analysis of paraffin-embedded human lung tissue slide using 17073-1-AP (LZTFL1 antibody) at dilution of 1:1000 (under 10x lens). Heat mediated antigen retrieval with Tris-EDTA buffer (pH 9.0).



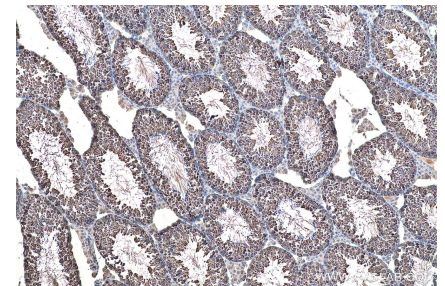
Immunohistochemical analysis of paraffin-embedded human colon tissue slide using 17073-1-AP (LZTFL1 antibody) at dilution of 1:500 (under 10x lens). Heat mediated antigen retrieval with Tris-EDTA buffer (pH 9.0).



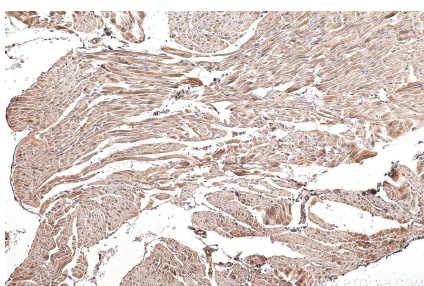
Immunohistochemical analysis of paraffin-embedded mouse heart tissue slide using 17073-1-AP (LZTFL1 antibody) at dilution of 1:500 (under 10x lens). Heat mediated antigen retrieval with Tris-EDTA buffer (pH 9.0).



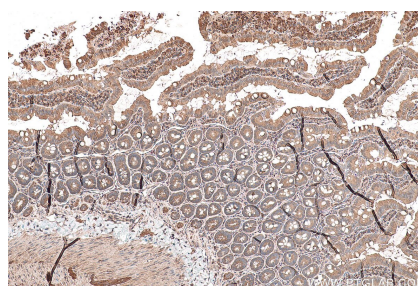
Immunohistochemical analysis of paraffin-embedded mouse lung tissue slide using 17073-1-AP (LZTFL1 antibody) at dilution of 1:500 (under 10x lens). Heat mediated antigen retrieval with Tris-EDTA buffer (pH 9.0).



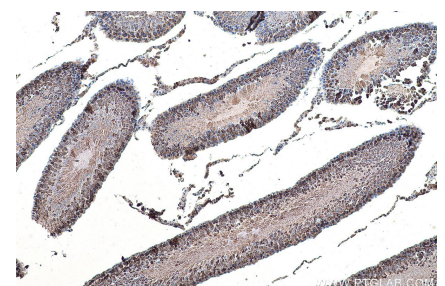
Immunohistochemical analysis of paraffin-embedded mouse testis tissue slide using 17073-1-AP (LZTFL1 antibody) at dilution of 1:500 (under 10x lens). Heat mediated antigen retrieval with Tris-EDTA buffer (pH 9.0).



Immunohistochemical analysis of paraffin-embedded mouse heart tissue slide using 17073-1-AP (LZTFL1 antibody) at dilution of 1:500 (under 10x lens). Heat mediated antigen retrieval with Tris-EDTA buffer (pH 9.0).

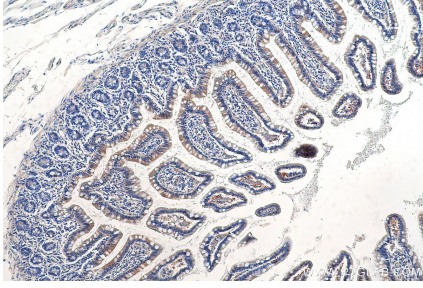


Immunohistochemical analysis of paraffin-embedded mouse lung tissue slide using 17073-1-AP (LZTFL1 antibody) at dilution of 1:500 (under 10x lens). Heat mediated antigen retrieval with Tris-EDTA buffer (pH 9.0).



Immunohistochemical analysis of paraffin-embedded mouse testis tissue slide using 17073-1-AP (LZTFL1 antibody) at dilution of 1:500 (under 10x lens). Heat mediated antigen retrieval with Tris-EDTA buffer (pH 9.0).

Immunohistochemical analysis of paraffin-embedded rat heart tissue slide using 17073-1-AP (LZTFL1 antibody) at dilution of 1:500 (under 10x lens). Heat mediated antigen retrieval with Tris-EDTA buffer (pH 9.0).



Immunohistochemical analysis of paraffin-embedded rat small intestine tissue slide using 17073-1-AP (LZTFL1 antibody) at dilution of 1:500 (under 10x lens). Heat mediated antigen retrieval with Tris-EDTA buffer (pH 9.0).

Immunohistochemical analysis of paraffin-embedded rat testis tissue slide using 17073-1-AP (LZTFL1 antibody) at dilution of 1:500 (under 10x lens). Heat mediated antigen retrieval with Tris-EDTA buffer (pH 9.0).

Immunohistochemical analysis of paraffin-embedded human small intestine tissue slide using 17073-1-AP (LZTFL1 antibody) at dilution of 1:500 (under 10x lens). Heat mediated antigen retrieval with Tris-EDTA buffer (pH 9.0).