

À des fins de recherche uniquement

Anticorps Polyclonal de lapin anti-SPHK2



Numéro de catalogue: 17096-1-AP

Phare

30 Publications

Informations de base

Numéro de catalogue:

17096-1-AP

Taille:

150ul, Concentration: 400 µg/ml by Nanodrop and 267 µg/ml by Bradford method using BSA as the standard;

Hôte:

Lapin

Isotype:

IgG

Immunogen Catalog Number:

AG10569

Numéro d'acquisition GenBank:

BC010671

Identification du gène (NCBI):

56848

Nom complet:

sphingosine kinase 2

MW calculé

618 aa, 65 kDa

MW observés:

65-70 kDa

Méthode de purification:

Purification par affinité contre l'antigène

Dilutions recommandées:

WB 1:1000-1:6000

IP 0.5-4.0 ug for IP and 1:500-1:1000 for WB

IHC 1:50-1:500

IF 1:200-1:800

Applications

Applications testées:

FC, IF, IHC, IP, WB, ELISA

Demandes citées:

CoIP, FC, IF, IHC, IP, WB

Spécificité de l'espèce:

Humain, rat, souris

Espèces citées:

Humain, poisson-zèbre, rat, souris

Remarque-IHC: il est suggéré de démasquer l'antigène avec un tampon de TE buffer pH 9.0; (*) A défaut, 'le démasquage de l'antigène peut être 'effectué avec un tampon citrate pH 6,0.

Contrôles positifs:

WB : cellules L02, cellules A549, cellules HCT 116, cellules Raji, tissu cardiaque de souris, tissu cérébral de rat, tissu cérébral de souris, tissu hépatique de souris, tissu rénal de souris, tissu rénal humain

IP : tissu hépatique de souris,

IHC : tissu de cancer du sein humain, tissu hépatique humain, tissu rénal humain

IF : cellules HeLa,

Informations générales

SPHK2(Sphingosine kinase 2) is also named as SK2, SPK2 and catalyzes the phosphorylation of sphingosine to form sphingosine 1-phosphate (SPP), a lipid mediator with both intra- and extracellular functions. SPHK2 associates with HDAC1 and HDAC2 in repressor complexes and is selectively enriched at the promoters of the genes encoding the cyclin-dependent kinase inhibitor p21 or the transcriptional regulator c-fos, where it enhanced local histone H3 acetylation and transcription. SphK2 is a ~66kDa protein that is most abundantly expressed in the liver and heart(PMID:19168577). SphK2 has two splice variants, which are the 68-kDa SphK2-S and the NH2-terminal extended 72-kDa SphK2-L (PMID:17974990).

Publications notables

Autrice	Pubmed ID	Journal	Application
Heidi A Neubauer	30250299	Oncogene	WB,IF,IP
Mengqiong Xu	36070294	PLoS Pathog	CoIP
Teresa Sanchez	12954648	J Biol Chem	WB

Stockage

Stockage:

Stocker à -20°C. Stable pendant un an après l'expédition.

Tampon de stockage:

PBS avec azoture de sodium à 0,02 % et glycérol à 50 % pH 7,3

L'aliquotage n'est pas nécessaire pour le stockage à -20C

*** Les 20ul contiennent 0,1% de BSA.

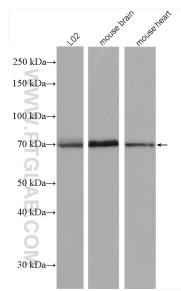
For technical support and original validation data for this product please contact:

T: 1 (888) 4PTGLAB (1-888-478-4522) (toll free in USA), or 1(312) 455-8498 (outside USA)

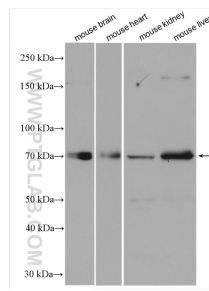
E: proteintech@ptglab.com
W: ptglab.com

This product is exclusively available under Proteintech Group brand and is not available to purchase from any other manufacturer.

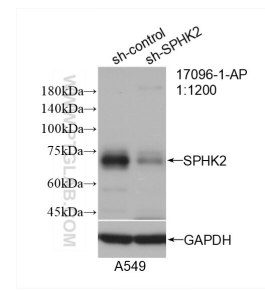
Données de validation sélectionnées



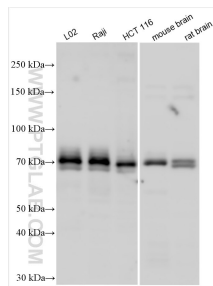
Various lysates were subjected to SDS PAGE followed by western blot with 17096-1-AP (SPHK2 antibody) at dilution of 1:3000 incubated at room temperature for 1.5 hours.



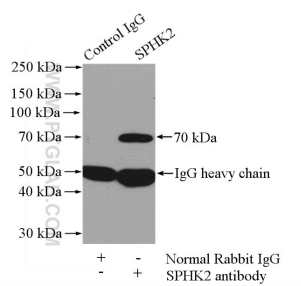
Various lysates were subjected to SDS PAGE followed by western blot with 17096-1-AP (SPHK2 antibody) at dilution of 1:3000 incubated at room temperature for 1.5 hours.



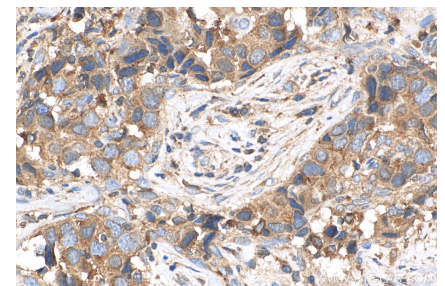
WB result of SPHK2 antibody (17096-1-AP; 1:1200; incubated at room temperature for 1.5 hours) with sh-Control and sh-SPHK2 transfected A549 cells.



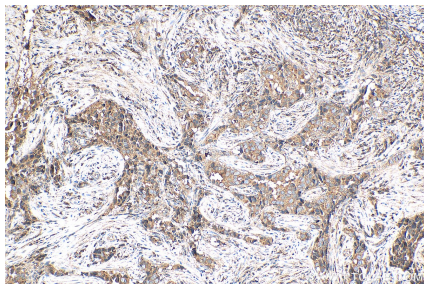
Various lysates were subjected to SDS PAGE followed by western blot with 17096-1-AP (SPHK2 antibody) at dilution of 1:3000 incubated at room temperature for 1.5 hours.



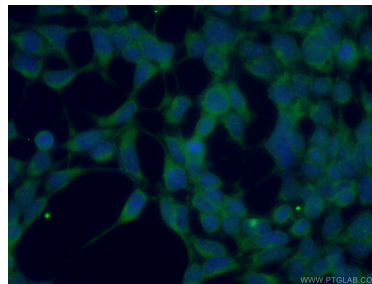
IP Result of anti-SPHK2 (IP:17096-1-AP, 4ug; Detection:17096-1-AP 1:800) with mouse liver tissue lysate 4000ug.



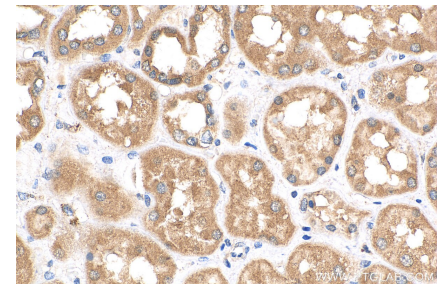
Immunohistochemical analysis of paraffin-embedded human breast cancer tissue slide using 17096-1-AP (SPHK2 antibody) at dilution of 1:200 (under 40x lens). Heat mediated antigen retrieval with Tris-EDTA buffer (pH 9.0).



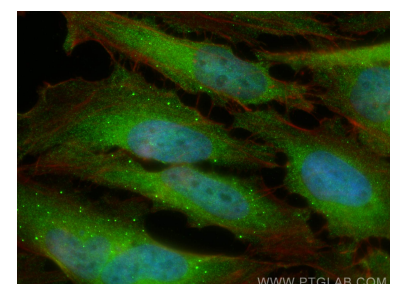
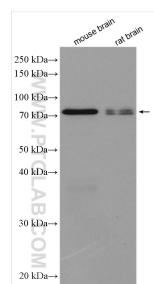
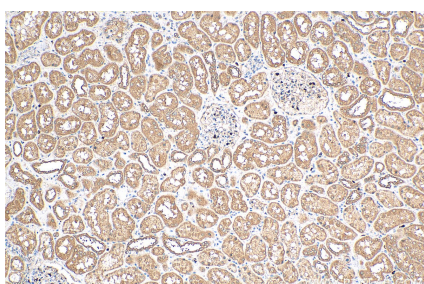
Immunohistochemical analysis of paraffin-embedded human breast cancer tissue slide using 17096-1-AP (SPHK2 antibody) at dilution of 1:200 (under 10x lens). Heat mediated antigen retrieval with Tris-EDTA buffer (pH 9.0).



Immunofluorescent analysis of (-20°C Ethanol) fixed HEK-293 cells using 17096-1-AP (SPHK2 antibody) at dilution of 1:50 and Alexa Fluor 488-Conjugated AffiniPure Goat Anti-Rabbit IgG(H+L).



Immunohistochemical analysis of paraffin-embedded human kidney tissue slide using 17096-1-AP (SPHK2 antibody) at dilution of 1:200 (under 40x lens). Heat mediated antigen retrieval with Tris-EDTA buffer (pH 9.0).

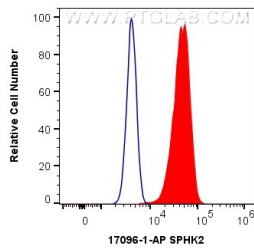


WWW.PTGLAB.COM

Immunohistochemical analysis of paraffin-embedded human kidney tissue slide using 17096-1-AP (SPHK2 antibody) at dilution of 1:200 (under 10x lens). Heat mediated antigen retrieval with Tris-EDTA buffer (pH 9.0).

Various lysates were subjected to SDS PAGE followed by western blot with 17096-1-AP (SPHK2 antibody) at dilution of 1:5000 incubated at room temperature for 1.5 hours.

Immunofluorescent analysis of (4% PFA) fixed HeLa cells using SPHK2 antibody (17096-1-AP) at dilution of 1:400 and CoraLite®488-Conjugated AffiniPure Goat Anti-Rabbit IgG(H+L), CL594-Phalloidin (red).



1X10⁶ HeLa cells were intracellularly stained with 0.4 ug Anti-Human SPHK2 (17096-1-AP) and CoraLite®488-Conjugated AffiniPure Goat Anti-Rabbit IgG(H+L) at dilution 1:1000 (red), or 0.4 ug Isotype Control. Cells were fixed with 4% PFA and permeabilized with Flow Cytometry Perm Buffer (PF00011-C).