

À des fins de recherche uniquement

Anticorps Polyclonal de lapin anti-OGDHL



Numéro de catalogue: 17110-1-AP

Phare

11 Publications

Informations de base

Numéro de catalogue:

17110-1-AP

Taille:

150ul, Concentration: 187 µg/ml by Nanodrop and 187 µg/ml by Bradford method using BSA as the standard;

Hôte:

Lapin

Isotype:

IgG

Immunogen Catalog Number:

AG10794

Numéro d'acquisition GenBank:

BC026320

Identification du gène (NCBI):

55753

Nom complet:

oxoglutarate dehydrogenase-like

MW calculé

1010 aa, 115 kDa

MW observés:

115 kDa

Méthode de purification:

Purification par affinité contre l'antigène

Dilutions recommandées:

WB 1:2000-1:10000

IP 0.5-4.0 ug for IP and 1:500-1:1000 for WB

IHC 1:20-1:200

Applications

Applications testées:

IHC, IP, WB, ELISA

Demandes citées:

FC, IF, IHC, WB

Spécificité de l'espèce:

Humain, rat, souris

Espèces citées:

Humain, rat, souris

Remarque-IHC: il est suggéré de démasquer l'antigène avec un tampon de TE buffer pH 9,0; (*) A défaut, le démasquage de l'antigène peut être effectué avec un tampon citrate pH 6,0.

Contrôles positifs:

WB : tissu cérébral de souris, tissu cérébral de rat, tissu rénal de souris

IP : tissu cérébral de souris,

IHC : tissu cérébral humain,

Informations générales

OGDHL(oxoglutarate dehydrogenase-like) is also named as KGDE1KL, FLJ10851, KIAA1290 and belongs to the alpha-ketoglutarate dehydrogenase family. OGDHL is one of the rate-limiting component of the multienzyme OGDH complex (OGDHC) whose malfunction is associated with neuro-degeneration and it is localized only in the mitochondrial fraction and not in the cytosolic or nuclear fractions(PMID:23152800). OGDHL negatively regulates cell proliferation by inducing apoptosis in cervical cancer cells. It may thus participate in brain-specific control of 2-oxoglutarate distribution between energy production and synthesis of the neurotransmitter glutamate(PMID:18783430). It has 3 isoforms(114 kDa, 108 kDa, 91 kDa) produced by alternative splicing.

Publications notables

Autrice	Pubmed ID	Journal	Application
Min Tang	31624233	Transl Psychiatry	WB
Mausam Patel	33330671	Front Cardiovasc Med	IHC
Zheng Yie Yap	34800363	Am J Hum Genet	WB

Stockage

Stockage:

Stocker à -20°C. Stable pendant un an après l'expédition.

Tampon de stockage:

PBS avec azoture de sodium à 0,02 % et glycérol à 50 % pH 7,3

L'aliquoteage n'est pas nécessaire pour le stockage à -20C

*** Les 20ul contiennent 0,1% de BSA.

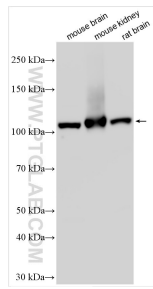
For technical support and original validation data for this product please contact:

T: 1 (888) 4PTGLAB (1-888-478-4522) (toll free in USA), or 1(312) 455-8498 (outside USA)

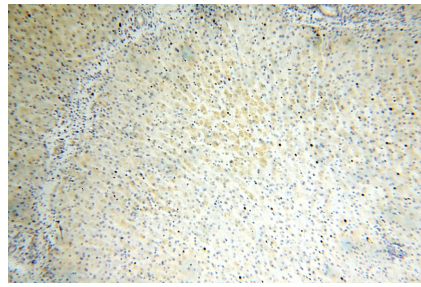
E: proteintech@ptglab.com
W: ptglab.com

This product is exclusively available under Proteintech Group brand and is not available to purchase from any other manufacturer.

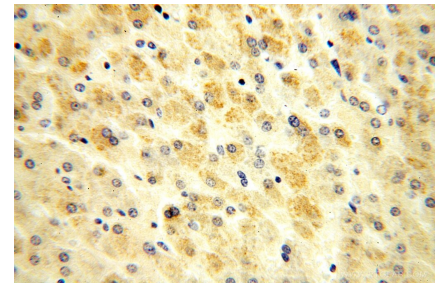
Données de validation sélectionnées



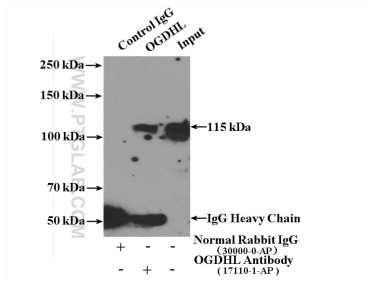
Various lysates were subjected to SDS PAGE followed by western blot with 17110-1-AP (OGDHL antibody) at dilution of 1:5000 incubated at room temperature for 1.5 hours.



Immunohistochemical analysis of paraffin-embedded human brain using 17110-1-AP (OGDHL antibody) at dilution of 1:100 (under 10x lens).



Immunohistochemical analysis of paraffin-embedded human brain using 17110-1-AP (OGDHL antibody) at dilution of 1:100 (under 40x lens).



IP Result of anti-OGDHL (IP:17110-1-AP, 4ug; Detection:17110-1-AP 1:500) with mouse brain tissue lysate 4000ug.