

À des fins de recherche uniquement

Anticorps Polyclonal de lapin anti-LRRC8A/SWELL1



Numéro de catalogue: 17155-1-AP

1 Publications

Informations de base

Numéro de catalogue:

17155-1-AP

Taille:

150ul, Concentration: 260 µg/ml by Nanodrop and 133 µg/ml by Bradford method using BSA as the standard;

Hôte:

Lapin

Isotype:

IgG

Immunogen Catalog Number:

AG10062

Numéro d'acquisition GenBank:

BC051322

Identification du gène (NCBI):

56262

Nom complet:

leucine rich repeat containing 8 family, member A

MW calculé

810 aa, 94 kDa

MW observés:

94 kDa

Méthode de purification:

Purification par affinité contre l'antigène

Dilutions recommandées:

WB 1:200-1:1000

IHC 1:50-1:500

Applications

Applications testées:

IHC, WB, ELISA

Demandes citées:

IHC

Spécificité de l'espèce:

Humain, rat

Espèces citées:

Humain

Remarque-IHC: il est suggéré de démasquer l'antigène avec un tampon de TE buffer pH 9,0; (*) A défaut, 'le démasquage de l'antigène peut être 'effectué avec un tampon citrate pH 6,0.

Contrôles positifs:

WB : tissu pulmonaire de rat,

IHC : tissu de cancer du côlon humain,

Informations générales

LRRC8A, also named as SWELL1, KIAA1437 and LRRC8, belongs to the LRRC8 family. LRRC8A is a ubiquitous and integral component of the VRAC and has been reported to be required for regulation of cell volume. It indicates that LRRC8A plays a role in regulating the flow of ions, especially anions, into and out of cells (PMID: 32079488). Additionally, there have been several reports that LRRC8A is critical for differentiation of adipocytes and lymphocytes (PMID: 31323188). The molecular weight of LRRC8A is 94 kDa.

Publications notables

Autrice	Pubmed ID	Journal	Application
Yanjie Chen	36632452	Int J Biol Sci	IHC

Stockage

Stockage:

Stocker à -20°C. Stable pendant un an après l'expédition.

Tampon de stockage:

PBS avec azoture de sodium à 0,02 % et glycérol à 50 % pH 7,3

L'aliquotage n'est pas nécessaire pour le stockage à -20C

*** Les 20ul contiennent 0,1% de BSA.

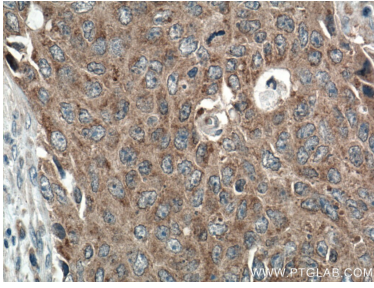
For technical support and original validation data for this product please contact:

T: 1 (888) 4PTGLAB (1-888-478-4522) (toll free in USA), or 1(312) 455-8498 (outside USA)

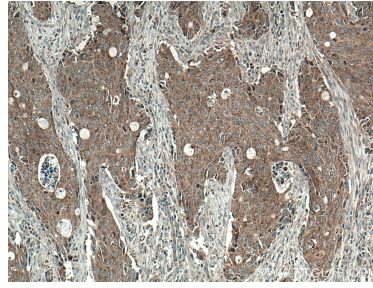
E: proteintech@ptglab.com
W: ptglab.com

This product is exclusively available under Proteintech Group brand and is not available to purchase from any other manufacturer.

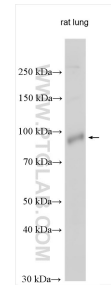
Données de validation sélectionnées



Immunohistochemical analysis of paraffin-embedded human colon cancer tissue slide using 17155-1-AP (LRRC8A antibody) at dilution of 1:200 (under 40x lens. Heat mediated antigen retrieval with Tris-EDTA buffer (pH 9.0).



Immunohistochemical analysis of paraffin-embedded human colon cancer tissue slide using 17155-1-AP (LRRC8A antibody) at dilution of 1:200 (under 10x lens. Heat mediated antigen retrieval with Tris-EDTA buffer (pH 9.0).



rat lung tissue were subjected to SDS PAGE followed by western blot with 17155-1-AP (LRRC8A/SWELL1 antibody) at dilution of 1:300 incubated at room temperature for 1.5 hours.