

À des fins de recherche uniquement

Anticorps Polyclonal de lapin anti-ACAD10



Numéro de catalogue: 17161-1-AP

Informations de base

Numéro de catalogue: 17161-1-AP	Numéro d'acquisition GenBank: BC015056	Méthode de purification: Purification par affinité contre l'antigène
Taille: 150ul , Concentration: 600 µg/ml by Nanodrop and 353 µg/ml by Bradford method using BSA as the standard;	Identification du gène (NCBI): 80724	Dilutions recommandées: WB 1:500-1:1000 IHC 1:20-1:200 IF 1:10-1:100
Hôte: Lapin	Nom complet: acyl-Coenzyme A dehydrogenase family, member 10	
Isotype: IgG	MW calculé: 26 kDa, 119 kDa	
Immunogen Catalog Number: AG10510	MW observés: 119 kDa	

Applications

Applications testées: IF, IHC, WB, ELISA	Contrôles positifs: WB : tissu splénique de souris, IHC : tissu pancréatique humain, IF : cellules HeLa,
Spécificité de l'espèce: Humain, rat, souris	
Remarque-IHC: <i>il est suggéré de démasquer l'antigène avec un tampon de TE buffer pH 9,0; (*) À défaut, le démasquage de l'antigène peut être effectué avec un tampon citrate pH 6,0.</i>	

Informations générales

ACAD10 (Acyl-CoA dehydrogenase family member 10) belongs to the acyl-CoA dehydrogenase family. ACAD10 has significant activity towards the branched-chain substrates R and S, 2-methyl-C15-CoA and is highly expressed in fetal but not adult brain. This pattern of expression is similar to that of LCAD, another ACAD previously shown to be involved in long branched chain fatty acid metabolism (PMID:21237683). It has 4 isoforms produced by alternative splicing.

Stockage

Stockage:
Stocker à -20°C. Stable pendant un an après l'expédition.
Tampon de stockage:
PBS avec azoture de sodium à 0,02 % et glycérol à 50 % pH 7,3
L'aliquotage n'est pas nécessaire pour le stockage à -20C

*** Les 20ul contiennent 0,1% de BSA.

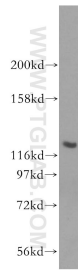
For technical support and original validation data for this product please contact:

T: 1 (888) 4PTGLAB (1-888-478-4522) (toll free in USA), or 1(312) 455-8498 (outside USA)

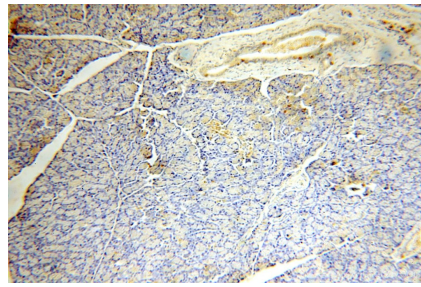
E: proteintech@ptglab.com
W: ptglab.com

This product is exclusively available under Proteintech Group brand and is not available to purchase from any other manufacturer.

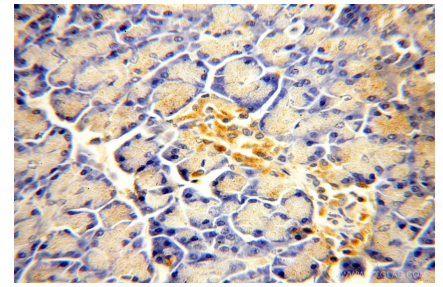
Données de validation sélectionnées



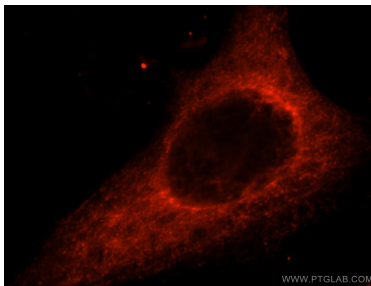
mouse spleen tissue were subjected to SDS PAGE followed by western blot with 17161-1-AP (ACAD10 antibody) at dilution of 1:300 incubated at room temperature for 1.5 hours.



Immunohistochemical analysis of paraffin-embedded human pancreas using 17161-1-AP (ACAD10 antibody) at dilution of 1:100 (under 10x lens).



Immunohistochemical analysis of paraffin-embedded human pancreas using 17161-1-AP (ACAD10 antibody) at dilution of 1:100 (under 40x lens).



Immunofluorescent analysis of HeLa cells, using ACAD10 antibody 17161-1-AP at 1:25 dilution and Rhodamine-labeled goat anti-rabbit IgG (red).