

À des fins de recherche uniquement

# Anticorps Polyclonal de lapin anti-ADH1B



Numéro de catalogue: 17165-1-AP

6 Publications

## Informations de base

Numéro de catalogue:  
17165-1-AP

Taille:  
150ul, Concentration: 750 µg/ml by Nanodrop and 333 µg/ml by Bradford method using BSA as the standard;

Hôte:  
Lapin

Isotype:  
IgG

Immunogen Catalog Number:  
AG10630

Numéro d'acquisition GenBank:  
BC033009

Identification du gène (NCBI):

125  
Nom complet:  
alcohol dehydrogenase 1B (class I), beta polypeptide

MW calculé  
375 aa, 40 kDa

MW observés:  
40 kDa

Méthode de purification:  
Purification par affinité contre l'antigène

Dilutions recommandées:  
WB 1:500-1:2000  
IP 0.5-4.0 ug for IP and 1:500-1:1000 for WB

## Applications

Applications testées:  
IP, WB, ELISA

Demandes citées:  
IF, IHC, WB

Spécificité de l'espèce:  
rat, souris

Espèces citées:  
rat

Contrôles positifs:

WB : tissu hépatique de souris,

IP : tissu hépatique de souris,

## Informations générales

The ADH1B gene encodes the beta subunit of class I alcohol dehydrogenase (ADH), an enzyme that catalyzes the rate-limiting step for ethanol metabolism: the oxidation of alcohol to acetaldehyde. Class 1 ADH is a homo- or heterodimeric molecule, formed by the association of 3 types of class I ADH subunits, alpha (ADH1A), beta, and gamma (ADH1C). ADH1B is also named as ADH2 and belongs to the zinc-containing alcohol dehydrogenase family. This protein can exist as a homodimer (PMID:19365573).

## Publications notables

Autrice	Pubmed ID	Journal	Application
Tomoko Kawai	27022678	Endocrinology	IF
Jie Yang	35351461	Exp Eye Res	IHC
Wenjun Zhao	35655427	J Sci Food Agric	WB

## Stockage

Stockage:

Stocker à -20°C. Stable pendant un an après l'expédition.

Tampon de stockage:

PBS avec azoture de sodium à 0,02 % et glycérol à 50 % pH 7,3

L'aliquotage n'est pas nécessaire pour le stockage à -20C

\*\*\* Les 20ul contiennent 0,1% de BSA.

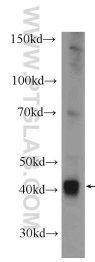
For technical support and original validation data for this product please contact:

T: 1 (888) 4PTGLAB (1-888-478-4522) (toll free in USA), or 1(312) 455-8498 (outside USA)

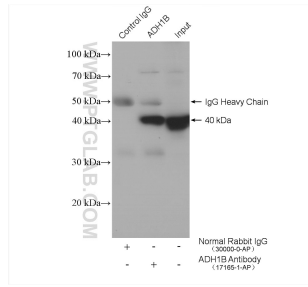
E: [proteintech@ptglab.com](mailto:proteintech@ptglab.com)  
W: [ptglab.com](http://ptglab.com)

This product is exclusively available under Proteintech Group brand and is not available to purchase from any other manufacturer.

## Données de validation sélectionnées



mouse liver tissue were subjected to SDS PAGE followed by western blot with 17165-1-AP (ADH1B Antibody) at dilution of 1:1000 incubated at room temperature for 1.5 hours.



IP result of anti-ADH1B (IP:17165-1-AP, 4ug; Detection:17165-1-AP 1:500) with mouse liver tissue lysate 4000 ug.