

À des fins de recherche uniquement

Anticorps Polyclonal de lapin anti-G-CSF



Numéro de catalogue: 17185-1-AP

2 Publications

Informations de base

Numéro de catalogue:
17185-1-AP

Taille:
150ul, Concentration: 170 µg/ml by Nanodrop and 167 µg/ml by Bradford method using BSA as the standard;

Hôte:
Lapin

Isotype:
IgG

Immunogen Catalog Number:
AG10968

Numéro d'acquisition GenBank:
BC033245

Identification du gène (NCBI):
1440

Nom complet:
colony stimulating factor 3 (granulocyte)

MW calculé:
200 aa, 22 kDa

MW observés:
20 kDa

Méthode de purification:
Purification par affinité contre l'antigène

Dilutions recommandées:
WB 1:500-1:2000

Applications

Applications testées:
FC, WB, ELISA

Demandes citées:
IHC, WB

Spécificité de l'espèce:
Humain

Espèces citées:
Humain

Contrôles positifs:

WB : cellules HeLa, cellules HepG2, cellules K-562, cellules MCF-7, cellules MOLT-4

Informations générales

Granulocyte colony-stimulating factor (G-CSF), also referred to as CSF3, is a protective cytokine with anti-inflammatory effects. G-CSF is important in promoting survival of the granulocytic lineage cells and proliferation and migration of neutrophils as well as trophoblast cells. G-CSF acts by binding to its receptor G-CSFR (also called CSF3R), which after binding with G-CSF activates the canonical Janus kinase (Jak)/signal transducer, activator of transcription (STAT) and Ras/Raf/MAP kinase pathways. G-CSF potently stimulates the proliferation and release of peripheral blood progenitor cells into the bloodstream and is therefore used to treat neutropenia after chemotherapy. Furthermore, G-CSF levels are elevated upon intensive exercise leading to increased neutrophil counts, which are predominantly due to delayed neutrophil apoptosis.

Publications notables

Autrice	Pubmed ID	Journal	Application
Zheng Zhang	31765840	Mol Immunol	IHC
Wei Jiang	36982170	Int J Mol Sci	WB, IHC

Stockage

Stockage:

Stocker à -20°C. Stable pendant un an après l'expédition.

Tampon de stockage:

PBS avec azoture de sodium à 0,02 % et glycérol à 50 % pH 7,3

L'aliquotage n'est pas nécessaire pour le stockage à -20°C

*** Les 20ul contiennent 0,1% de BSA.

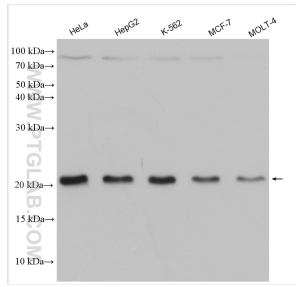
For technical support and original validation data for this product please contact:

T: 1 (888) 4PTGLAB (1-888-478-4522) (toll free in USA), or 1(312) 455-8498 (outside USA)

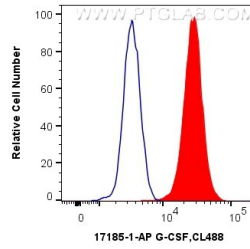
E: proteintech@ptglab.com
W: ptglab.com

This product is exclusively available under Proteintech Group brand and is not available to purchase from any other manufacturer.

Données de validation sélectionnées



Various lysates were subjected to SDS PAGE followed by western blot with 17185-1-AP (G-CSF antibody) at dilution of 1:1000 incubated at room temperature for 1.5 hours.



1×10^6 K-562 cells were intracellularly stained with 0.4 ug Anti-Human G-CSF (17185-1-AP) and CoraLite® 488-Conjugated AffiniPure Goat Anti-Rabbit IgG(H+L) at dilution 1:1000 (red), or 0.4 ug Control Antibody. Cells were fixed with 4% PFA and permeabilized with Flow Cytometry Perm Buffer (PF00011-C).