

À des fins de recherche uniquement

# Anticorps Polyclonal de lapin anti-RSPO3



Numéro de catalogue: 17193-1-AP

6 Publications

## Informations de base

Numéro de catalogue:  
17193-1-AP

Taille:  
150ul, Concentration: 450 µg/ml by Nanodrop and 187 µg/ml by Bradford method using BSA as the standard;

Hôte:  
Lapin

Isotype:  
IgG

Immunogen Catalog Number:  
AG9899

Numéro d'acquisition GenBank:  
BC022367

Identification du gène (NCBI):  
84870

Nom complet:  
R-spondin 3 homolog (Xenopus laevis)

MW calculé:  
272 aa, 31 kDa

MW observés:  
40 kDa

Méthode de purification:  
Purification par affinité contre l'antigène

Dilutions recommandées:  
WB 1:200-1:1000  
IP 0.5-4.0 ug for IP and 1:200-1:1000 for WB  
IHC 1:100-1:400

## Applications

Applications testées:  
IHC, IP, WB, ELISA

Demandes citées:  
IHC, WB

Spécificité de l'espèce:  
Humain, rat, souris

Espèces citées:  
Humain, souris

**Remarque-IHC: il est suggéré de démasquer l'antigène avec un tampon de TE buffer pH 9.0; (\*) A défaut, le démasquage de l'antigène peut être effectué avec un tampon citrate pH 6,0.**

Contrôles positifs:

WB : tissu cérébral de souris, cellules A549, cellules HEK-293 transfectées, tissu placentaire humain

IP : tissu placentaire humain,

IHC : tissu de cancer du poumon humain, tissu placentaire humain

## Informations générales

RSPO3, also named as R-spondin-3, is a 272 amino acid protein, which contains 1 TSP type-1 domain and 2 FU (furin-like) repeats. RSPO3 may be a secreted protein and belongs to the R-spondin family. RSPO3 is expressed at higher level in placenta, small intestine, fetal thymus and lymph node. RSPO3 is an activator of the canonical Wnt signaling pathway by acting as a ligand for LGR4-6 receptors. The four R-spondins (RSPO 1-4) and three related leucinerich repeat-containing G-protein coupled receptors, LGR4, LGR5, and LGR6 (LGR4-6), constitute a ligand-receptor system that plays critical roles in development, stem cell survival, and oncogenesis. Ectopic expression of RSPO2/3 in mouse mammary epithelial cells led to an increase in invasiveness in vitro and in tumor formation and metastasis in vivo.

## Publications notables

Auteur	Pubmed ID	Journal	Application
Bhupesh Singla	32750106	Cardiovasc Res	WB
Kendra S Carmon	24639526	Proc Natl Acad Sci U S A	WB
Tomohiko Shinkawa	35272688	J Exp Clin Cancer Res	IHC

## Stockage

Stockage:

Stocker à -20°C. Stable pendant un an après l'expédition.

Tampon de stockage:

PBS avec azoture de sodium à 0,02 % et glycérol à 50 % pH 7,3

L'aliquotage n'est pas nécessaire pour le stockage à -20C

\*\*\* Les 20ul contiennent 0,1% de BSA.

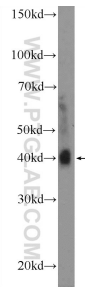
For technical support and original validation data for this product please contact:

T: 1 (888) 4PTGLAB (1-888-478-4522) (toll free in USA), or 1(312) 455-8498 (outside USA)

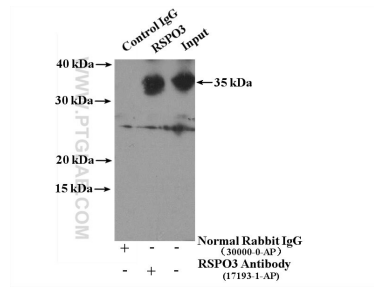
E: proteintech@ptglab.com  
W: ptglab.com

This product is exclusively available under Proteintech Group brand and is not available to purchase from any other manufacturer.

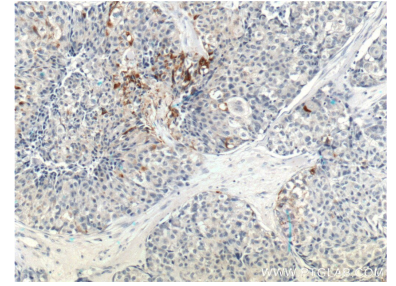
## Données de validation sélectionnées



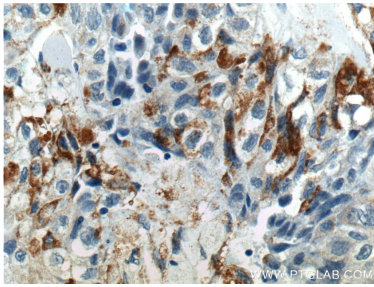
mouse brain tissue were subjected to SDS PAGE followed by western blot with 17193-1-AP (RSPO3 Antibody) at dilution of 1:300 incubated at room temperature for 1.5 hours.



IP Result of anti-RSPO3 (IP:17193-1-AP, 4ug; Detection:17193-1-AP 1:300) with human placenta tissue lysate 2800ug.



Immunohistochemical analysis of paraffin-embedded human lung cancer tissue slide using 17193-1-AP (RSPO3 Antibody) at dilution of 1:200 (under 10x lens).



Immunohistochemical analysis of paraffin-embedded human lung cancer tissue slide using 17193-1-AP (RSPO3 Antibody) at dilution of 1:200 (under 40x lens).