

À des fins de recherche uniquement

Anticorps Polyclonal de lapin anti-RIOK1



Numéro de catalogue: 17222-1-AP

Phare

3 Publications

Informations de base

Numéro de catalogue:
17222-1-AP

Taille:
150ul, Concentration: 150 µg/ml by
Nanodrop and 133 µg/ml by Bradford
method using BSA as the standard;

Hôte:
Lapin

Isotype:
IgG

Immunogen Catalog Number:
AG11057

Numéro d'acquisition GenBank:
BC006104

Identification du gène (NCBI):
83732

Nom complet:
RIO kinase 1 (yeast)

MW calculé
568 aa, 66 kDa

MW observés:
75-80 kDa

Méthode de purification:
Purification par affinité contre
l'antigène

Dilutions recommandées:
WB 1:500-1:1000
IP 0.5-4.0 ug for IP and 1:500-1:1000
for WB

Applications

Applications testées:
IP, WB, ELISA

Demandes citées:
WB

Spécificité de l'espèce:
Humain, rat, souris

Espèces citées:
Humain

Contrôles positifs:

WB : cellules HeLa, cellules HEK-293, cellules HepG2

IP : cellules HeLa,

Informations générales

Publications notables

Autrice	Pubmed ID	Journal	Application
Min Yu	34572430	Biomedicines	WB
Laura S Bisogno	30240757	iScience	WB
Zhiqi Huang	32599985	Cancer Res Treat	WB

Stockage

Stockage:

Stocker à -20°C. Stable pendant un an après l'expédition.

Tampon de stockage:

PBS avec azoture de sodium à 0,02 % et glycérol à 50 % pH 7,3

L'aliquotage n'est pas nécessaire pour le stockage à -20C

*** Les 20ul contiennent 0,1% de BSA.

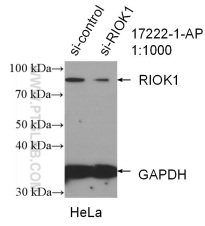
For technical support and original validation data for this product please contact:

T: 1 (888) 4PTGLAB (1-888-478-4522) (toll free
in USA), or 1(312) 455-8498 (outside USA)

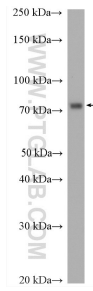
E: proteintech@ptglab.com
W: ptglab.com

This product is exclusively available under Proteintech Group brand and is not available to purchase from any other manufacturer.

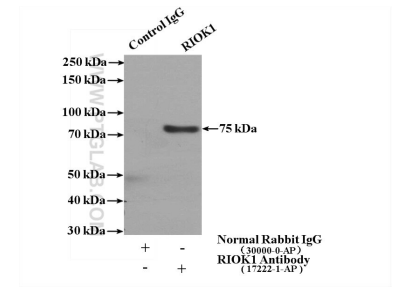
Données de validation sélectionnées



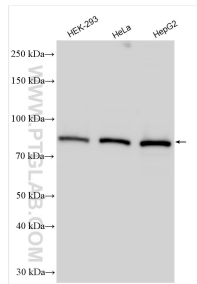
WB result of RIOK1 antibody (17222-1-AP; 1:1000; incubated at room temperature for 1.5 hours) with sh-Control and sh-RIOK1 transfected HeLa cells.



HeLa cells were subjected to SDS PAGE followed by western blot with 17222-1-AP (RIOK1 antibody) at dilution of 1:600 incubated at room temperature for 1.5 hours.



IP Result of anti-RIOK1 (IP:17222-1-AP, 4ug; Detection:17222-1-AP 1:500) with HeLa cells lysate 3200ug.



Various lysates were subjected to SDS PAGE followed by western blot with 17222-1-AP (RIOK1 antibody) at dilution of 1:4000 incubated at room temperature for 1.5 hours.