

À des fins de recherche uniquement

Anticorps Polyclonal de lapin anti-CD5L



Numéro de catalogue: 17224-1-AP

Informations de base

Numéro de catalogue: 17224-1-AP	Numéro d'acquisition GenBank: BC033586	Méthode de purification: Purification par affinité contre l'antigène
Taille: 150ul , Concentration: 130 µg/ml by Nanodrop and 133 µg/ml by Bradford method using BSA as the standard;	Identification du gène (NCBI): 922	Dilutions recommandées: WB 1:500-1:2000 IF 1:50-1:500
Hôte: Lapin	Nom complet: CD5 molecule-like	
Isotype: IgG	MW calculé 347 aa, 38 kDa	
Immunogen Catalog Number: AG11062	MW observés: 40 kDa	

Applications

Applications testées: IF, WB, ELISA	Contrôles positifs: WB : plasma humain, IF : cellules HepG2,
Spécificité de l'espèce: Humain	

Informations générales

CD5 molecule-like (CD5L), also known as apoptosis inhibitor expressed by macrophages (AIM), SP-alpha, apoptosis inhibitor 6 (API6), is a member of the scavenger receptor cysteine-rich (SRCR) family of proteins (PMID: 9045627; 9892623). CD5L is a soluble protein mainly secreted mostly by macrophages in lymphoid and inflamed tissues (PMID: 15009805). It contains three SRCR domains, each approximately 100 amino acids in length with sialic acid content at a potential region of O-linked glycosylation between SRCR domains 1 and 2. CD5L is involved in different processes such as metabolism, infection and autophagy (PMID: 33920819).

Stockage

Stockage:
Stocker à -20°C. Stable pendant un an après l'expédition.
Tampon de stockage:
PBS avec azoture de sodium à 0,02 % et glycérol à 50 % pH 7,3
L'aliquotage n'est pas nécessaire pour le stockage à -20C

*** Les 20ul contiennent 0,1% de BSA.

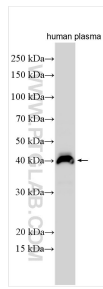
For technical support and original validation data for this product please contact:

T: 1 (888) 4PTGLAB (1-888-478-4522) (toll free in USA), or 1(312) 455-8498 (outside USA)

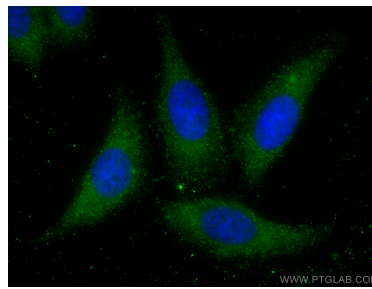
E: proteintech@ptglab.com
W: ptglab.com

This product is exclusively available under Proteintech Group brand and is not available to purchase from any other manufacturer.

Données de validation sélectionnées



human plasma was subjected to SDS PAGE followed by western blot with 17224-1-AP (CD5L antibody) at dilution of 1:1000 incubated at room temperature for 1.5 hours.



Immunofluorescent analysis of (-20°C Methanol) fixed HepG2 cells using CD5L antibody (17224-1-AP) at dilution of 1:200 and CoraLite® 488-Conjugated AffiniPure Goat Anti-Rabbit IgG(H+L).