

À des fins de recherche uniquement

# Anticorps Polyclonal de lapin anti-RB1CC1



Numéro de catalogue: 17250-1-AP

Phare

87 Publications

## Informations de base

Numéro de catalogue:  
17250-1-AP

Taille:  
150ul, Concentration: 700 µg/ml by Nanodrop and 267 µg/ml by Bradford method using BSA as the standard;

Hôte:  
Lapin

Isotype:  
IgG

Immunogen Catalog Number:  
AG10508

Numéro d'acquisition GenBank:  
BC017556

Identification du gène (NCBI):  
9821

Nom complet:  
RB1-inducible coiled-coil 1

MW calculé  
1594 aa, 183 kDa

MW observés:  
200 kDa

Méthode de purification:  
Purification par affinité contre l'antigène

Dilutions recommandées:  
WB 1:5000-1:50000  
IP 0.5-4.0 ug for IP and 1:500-1:1000 for WB  
IHC 1:20-1:200  
IF 1:10-1:100

## Applications

Applications testées:  
IF, IHC, IP, WB, ELISA

Demandes citées:  
CoIP, IF, IHC, IP, WB

Spécificité de l'espèce:  
Humain, rat, souris

Espèces citées:  
Humain, rat, singe, souris

**Remarque-IHC: il est suggéré de démasquer l'antigène avec un tampon de TE buffer pH 9,0; (\*) A défaut, le démasquage de l'antigène peut être effectué avec un tampon citrate pH 6,0.**

Contrôles positifs:

WB : cellules HEK-293, cellules Jurkat, cellules K-562, cellules MCF-7

IP : cellules HEK-293,

IHC : tissu de cancer du foie humain, tissu de cancer du sein humain

IF : cellules HepG2, cellules MCF-7

## Informations générales

RB1CC1, also named as RBICC or FIP200, is implicated in the regulation of RB1 expression and functions as a DNA-binding transcription factor. It is a potent regulator of the RB1 pathway and a mediator that plays a crucial role in muscular differentiation. Its expression is, thus, a prerequisite for myogenic differentiation. Involved in autophagy. RB1CC1 is required for autophagosome formation. It is probably involved in the tumorigenesis of breast cancer. RB1CC1 is frequently mutated in breast cancer and shows characteristics of a classical tumor suppressor gene. This antibody is a rabbit polyclonal antibody raised against residues near the C terminus of human RB1CC1. the calculated molecular weight of RB1CC1 is 180 kDa, but the modified RB1CC1 is about 200 kDa.

## Publications notables

Autrice	Pubmed ID	Journal	Application
Qiaoxia Zheng	36198318	Cell	WB,IF,CoIP
Shulin Li	34561617	Cell Res	WB,IF
Luis Muniz-Feliciano	28933590	Autophagy	WB

## Stockage

Stockage:

Stocker à -20°C. Stable pendant un an après l'expédition.

Tampon de stockage:

PBS avec azoture de sodium à 0,02 % et glycérol à 50 % pH 7,3

L'aliquotage n'est pas nécessaire pour le stockage à -20C

\*\*\* Les 20ul contiennent 0,1% de BSA.

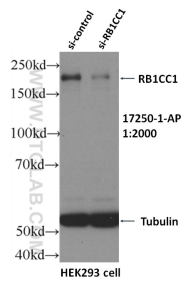
For technical support and original validation data for this product please contact:

T: 1 (888) 4PTGLAB (1-888-478-4522) (toll free in USA), or 1(312) 455-8498 (outside USA)

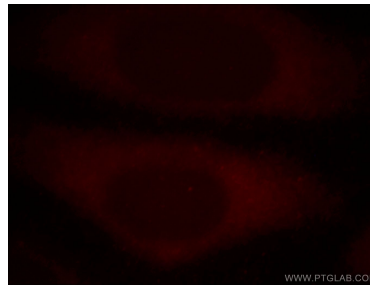
E: proteintech@ptglab.com  
W: ptglab.com

This product is exclusively available under Proteintech Group brand and is not available to purchase from any other manufacturer.

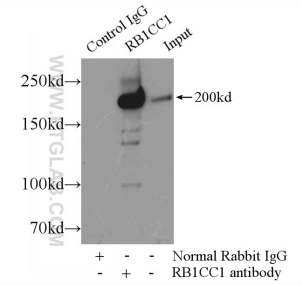
## Données de validation sélectionnées



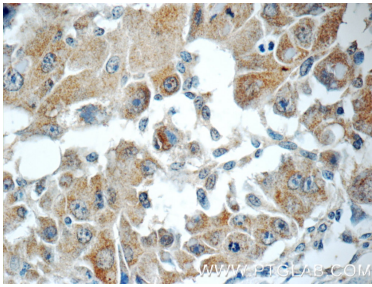
WB result of RB1CC1 antibody (17250-1-AP, 1:2000) with si-Control and si-RB1CC1 transfected HEK293 cells.



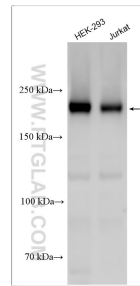
Immunofluorescent analysis of HepG2 cells, using RB1CC1 antibody 17250-1-AP at 1:25 dilution and Rhodamine-labeled goat anti-rabbit IgG (red).



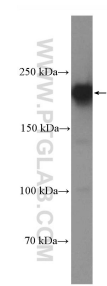
IP Result of anti-RB1CC1 (IP:17250-1-AP, 5ug; Detection:17250-1-AP 1:500) with HEK-293 cells lysate 2500ug.



Immunohistochemical analysis of paraffin-embedded human liver cancer tissue slide using 17250-1-AP (RB1CC1 Antibody) at dilution of 1:50 (under 40x lens).



Various lysates were subjected to SDS PAGE followed by western blot with 17250-1-AP (RB1CC1 antibody) at dilution of 1:15000 incubated at room temperature for 1.5 hours.



HEK-293 cells were subjected to SDS PAGE followed by western blot with 17250-1-AP (RB1CC1 antibody) at dilution of 1:3000 incubated at room temperature for 1.5 hours.