

À des fins de recherche uniquement

Anticorps Polyclonal de lapin anti-TBC1D15



Numéro de catalogue: 17252-1-AP

Informations de base

Numéro de catalogue: 17252-1-AP	Numéro d'acquisition GenBank: BC028352	Méthode de purification: Purification par affinité contre l'antigène
Taille: 150ul, Concentration: 300 µg/ml by Nanodrop and 160 µg/ml by Bradford method using BSA as the standard;	Identification du gène (NCBI): 64786	Dilutions recommandées: WB 1:500-1:1000
Hôte: Lapin	Nom complet: TBC1 domain family, member 15	
Isotype: IgG	MW calculé: 691 aa, 79 kDa	
Immunogen Catalog Number: AG10625	MW observés: 79 kDa	

Applications

Applications testées: WB, ELISA	Contrôles positifs: WB : cellules HeLa, cellules A431, cellules HEK-293T, cellules HepG2, tissu hépatique de rat, tissu hépatique de souris
Spécificité de l'espèce: Humain, rat, souris	

Informations générales

TBC1D15 is a highly conserved protein belonging to the TBC domain family and has similar functions to Rab-GAP. TBC1D15 is ubiquitously expressed and localized predominantly to the cytosol. TBC1D15 is a protein that contains a conserved Tre2/Bub2/Cdc16 (TBC) domain. TBC1D15 can serve as a mitochondrial Rab GTPase-activating protein (Rab-GAP) and influence autophagosome biogenesis and morphology downstream of Parkin activation. TBC1D15 can also control stem cell self-renewal when coupled with the Numb-p53 complex.

Stockage

Stockage:
Stocker à -20°C. Stable pendant un an après l'expédition.
Tampon de stockage:
PBS avec azoture de sodium à 0,02 % et glycérol à 50 % pH 7,3
L'aliquotage n'est pas nécessaire pour le stockage à -20C

*** Les 20ul contiennent 0,1% de BSA.

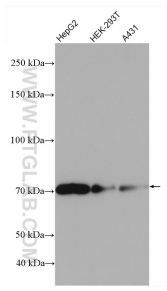
For technical support and original validation data for this product please contact:

T: 1 (888) 4PTGLAB (1-888-478-4522) (toll free in USA), or 1(312) 455-8498 (outside USA)

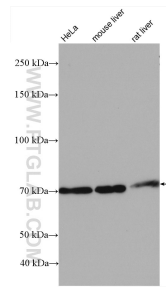
E: proteintech@ptglab.com
W: ptglab.com

This product is exclusively available under Proteintech Group brand and is not available to purchase from any other manufacturer.

Données de validation sélectionnées



Various lysates were subjected to SDS PAGE followed by western blot with 17252-1-AP (TBC1D15 antibody) at dilution of 1:600 incubated at room temperature for 1.5 hours.



Various lysates were subjected to SDS PAGE followed by western blot with 17252-1-AP (TBC1D15 antibody) at dilution of 1:600 incubated at room temperature for 1.5 hours.