

À des fins de recherche uniquement

Anticorps Polyclonal de lapin anti-SQRDL



Numéro de catalogue: 17256-1-AP

Phare

21 Publications

Informations de base

Numéro de catalogue:
17256-1-AP

Taille:
150ul, Concentration: 550 µg/ml by Nanodrop and 367 µg/ml by Bradford method using BSA as the standard;

Hôte:
Lapin

Isotype:
IgG

Immunogen Catalog Number:
AG10762

Numéro d'acquisition GenBank:
BC016836

Identification du gène (NCBI):
58472

Nom complet:
sulfide quinone reductase-like (yeast)

MW calculé
450 aa, 50 kDa

MW observés:
50 kDa

Méthode de purification:
Purification par affinité contre l'antigène

Dilutions recommandées:
WB 1:1000-1:4000
IP 0.5-4.0 µg for IP and 1:500-1:1000 for WB
IHC 1:20-1:200

Applications

Applications testées:
IHC, IP, WB, ELISA

Demandes citées:
IHC, WB

Spécificité de l'espèce:
Humain, rat, souris

Espèces citées:
Humain, poulet, rat, souris

Remarque-IHC: il est suggéré de démasquer l'antigène avec un tampon de TE buffer pH 9,0; (*) A défaut, 'le démasquage de l'antigène peut être effectué avec un tampon citrate pH 6,0.

Contrôles positifs:

WB : cellules HeLa, cellules HepG, cellules HepG2, cellules HT-29, cellules THP-1

IP : cellules HeLa,

IHC : tissu cérébral humain, tissu de cancer du côlon humain, tissu de cancer du foie humain, tissu hépatique de rat, tissu hépatique de souris, tissu pulmonaire humain, tissu splénique humain, tissu testiculaire humain

Informations générales

SQRDL(Sulfide:quinone oxidoreductase, mitochondrial) catalyzes the oxidation of hydrogen sulfide, with the help of a quinone. Although the SQRDL precursor protein displays a molecular weight of 50 kDa, a prominent band at about 46 kDa is detected by western blot. This discrepancy reflects the cleavage of an N-terminal targeting sequence of 4 kDa during the import of the protein into the mitochondria (PMID:22067608). SQRDL is one of the enzymes involved in H₂S signaling in a discrete population of neurons, oligodendrocytes, and endothelial cells.

Publications notables

| Autrice | Pubmed ID | Journal | Application |
|---------------------------|-----------|------------------------------------|-------------|
| Pilar González-García | 32975579 | Hum Mol Genet | WB |
| Giulio Kleiner | 30251690 | Biochim Biophys Acta Mol Basis Dis | WB |
| Agustín Hidalgo-Gutiérrez | 30482867 | EMBO Mol Med | WB |

Stockage

Stockage:

Stocker à -20°C. Stable pendant un an après l'expédition.

Tampon de stockage:

PBS avec azoture de sodium à 0,02 % et glycérol à 50 % pH 7,3

L'aliquotage n'est pas nécessaire pour le stockage à -20C

*** Les 20ul contiennent 0,1% de BSA.

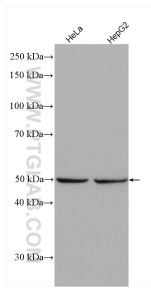
For technical support and original validation data for this product please contact:

T: 1 (888) 4PTGLAB (1-888-478-4522) (toll free in USA), or 1(312) 455-8498 (outside USA)

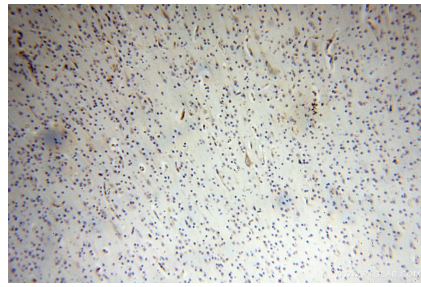
E: proteintech@ptglab.com
W: ptglab.com

This product is exclusively available under Proteintech Group brand and is not available to purchase from any other manufacturer.

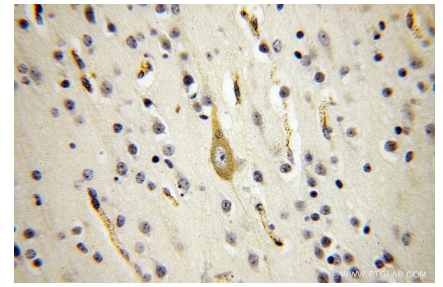
Données de validation sélectionnées



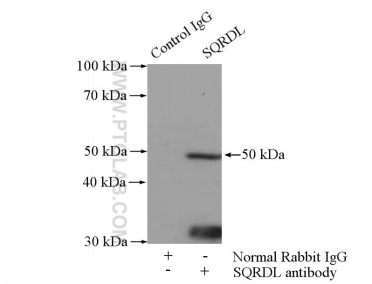
Various lysates were subjected to SDS PAGE followed by western blot with 17256-1-AP (SQRD L antibody) at dilution of 1:2000 incubated at room temperature for 1.5 hours.



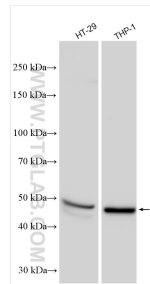
Immunohistochemical analysis of paraffin-embedded human brain using 17256-1-AP (SQRD L antibody) at dilution of 1:100 (under 10x lens).



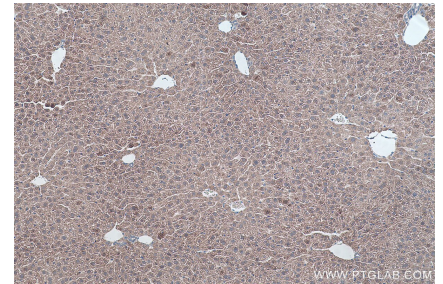
Immunohistochemical analysis of paraffin-embedded human brain using 17256-1-AP (SQRD L antibody) at dilution of 1:100 (under 40x lens).



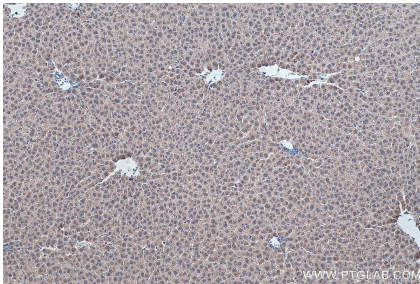
IP Result of anti-SQRD L (IP:17256-1-AP, 4 μ g; Detection:17256-1-AP 1:500) with HeLa cells lysate 2000 μ g.



Various lysates were subjected to SDS PAGE followed by western blot with 17256-1-AP (SQRD L antibody) at dilution of 1:4000 incubated at room temperature for 1.5 hours.



Immunohistochemical analysis of paraffin-embedded mouse liver tissue slide using 17256-1-AP (SQRD L antibody) at dilution of 1:2000 (under 10x lens). Heat mediated antigen retrieval with Tris-EDTA buffer (pH 9.0).



Immunohistochemical analysis of paraffin-embedded rat liver tissue slide using 17256-1-AP (SQRD L antibody) at dilution of 1:2000 (under 10x lens). Heat mediated antigen retrieval with Tris-EDTA buffer (pH 9.0).