

À des fins de recherche uniquement

Anticorps Polyclonal de lapin anti-NDEL1



Numéro de catalogue: 17262-1-AP

5 Publications

Informations de base

Numéro de catalogue:

17262-1-AP

Taille:

150ul, Concentration: 900 µg/ml by Nanodrop and 433 µg/ml by Bradford method using BSA as the standard;

Hôte:

Lapin

Isotype:

IgG

Immunogen Catalog Number:

AG10975

Numéro d'acquisition GenBank:

BC026101

Identification du gène (NCBI):

81565

Nom complet:

nudE nuclear distribution gene E homolog (A. nidulans)-like 1

MW calculé

345 aa, 38 kDa, 41 kDa

MW observés:

38-42 kDa

Méthode de purification:

Purification par affinité contre l'antigène

Dilutions recommandées:

WB 1:500-1:2000

IP 0.5-4.0 ug for IP and 1:200-1:1000 for WB

Applications

Applications testées:

IP, WB, ELISA

Demandes citées:

IF, IP, WB

Spécificité de l'espèce:

Humain, rat, souris

Espèces citées:

Humain, souris

Contrôles positifs:

WB : tissu cérébral humain, cellules HepG2

IP : cellules HepG2,

Informations générales

Nuclear distribution factor E-homolog 1 (NDE1), NDE-like 1 (NDEL1), and Lissencephaly 1 (LIS1) together involve in essential neurodevelopmental processes, including neuronal precursor proliferation and differentiation, neurite outgrowth, and neuronal migration. All three bind directly to Disrupted in Schizophrenia 1 (DISC1), a scaffold protein critical to neuronal proliferation, integration, migration, and synaptic function within the developing and adult brain.[PMID: 18469341] Nuclear distribution element-like 1 (NDEL1) was firstly identified as a regulator of the cytoskeleton in microtubule and intermediate filament dynamics and microtubule-based transport [PMID:21948775]. It is required for organization of the cellular microtubule array and microtubule anchoring at the centrosome, which is in part by targeting the microtubule severing protein KATNA1 to the centrosome[PMID:15728732].

Publications notables

Autrice	Pubmed ID	Journal	Application
Youngsik Woo	31815665	Elife	IP, WB
Ji-Ho Hong	27546710	Sci Rep	WB, IF
Hyowon Hong	31004438	Ann Neurol	WB

Stockage

Stockage:

Stocker à -20°C. Stable pendant un an après l'expédition.

Tampon de stockage:

PBS avec azoture de sodium à 0,02 % et glycérol à 50 % pH 7,3

L'aliquotage n'est pas nécessaire pour le stockage à -20C

*** Les 20ul contiennent 0,1% de BSA.

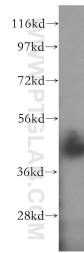
For technical support and original validation data for this product please contact:

T: 1 (888) 4PTGLAB (1-888-478-4522) (toll free in USA), or 1(312) 455-8498 (outside USA)

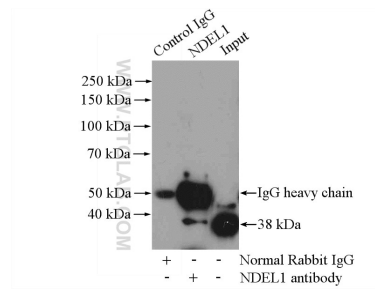
E: proteintech@ptglab.com
W: ptglab.com

This product is exclusively available under Proteintech Group brand and is not available to purchase from any other manufacturer.

Données de validation sélectionnées



human brain tissue were subjected to SDS PAGE followed by western blot with 17262-1-AP (NDEL1 antibody) at dilution of 1:500 incubated at room temperature for 1.5 hours.



IP Result of anti-NDEL1 (IP:17262-1-AP, 4ug; Detection:17262-1-AP 1:300) with HepG2 cells lysate 2400ug.