

À des fins de recherche uniquement

Anticorps Polyclonal de lapin anti-Cytokeratin 16



Numéro de catalogue: 17265-1-AP

1 Publications

Informations de base

Numéro de catalogue:
17265-1-AP

Taille:
150ul, Concentration: 260 µg/ml by Nanodrop and 133 µg/ml by Bradford method using BSA as the standard;

Hôte:
Lapin

Isotype:
IgG

Immunogen Catalog Number:
AG10999

Numéro d'acquisition GenBank:
BC039169

Identification du gène (NCBI):

Nom complet:
keratin 16

MW calculé
473 aa, 51 kDa

MW observés:
48 kDa

Méthode de purification:
Purification par affinité contre l'antigène

Dilutions recommandées:
WB 1:5000-1:50000
IHC 1:500-1:2000
IF 1:50-1:500

Applications

Applications testées:
FC, IF, IHC, WB, ELISA

Demandes citées:
IF

Spécificité de l'espèce:
Humain, souris

Espèces citées:
souris

Remarque-IHC: il est suggéré de démasquer l'antigène avec un tampon de TE buffer pH 9,0; (*) A défaut, le démasquage de l'antigène peut être effectué avec un tampon citrate pH 6,0.

Contrôles positifs:

WB : cellules HeLa, cellules A375, cellules MCF-7

IHC : tissu de cancer de l'œsophage humain, tissu cutané de souris, tissu cutané humain, tissu de cancer du col de l'utérus humain

IF : cellules A431,

Informations générales

Keratins are a large family of proteins that form the intermediate filament cytoskeleton of epithelial cells, which are classified into two major sequence types. Type I keratins are a group of acidic intermediate filament proteins, including K9-K23, and the hair keratins Ha1-Ha8. Type II keratins are the basic or neutral counterparts to the acidic type I keratins, including K1-K8, and the hair keratins, Hb1-Hb6. Keratin 16 is a type I cytokeratin. It is paired with keratin 6 in a number of epithelial tissues, including nail bed, esophagus, tongue, and hair follicles.

Publications notables

Autrice	Pubmed ID	Journal	Application
Lusheng Wang	36733502	Front Pharmacol	IF

Stockage

Stockage:
Stocker à -20°C. Stable pendant un an après l'expédition.

Tampon de stockage:
PBS avec azoture de sodium à 0,02 % et glycérol à 50 % pH 7,3
L'aliquotage n'est pas nécessaire pour le stockage à -20C

*** Les 20ul contiennent 0,1% de BSA.

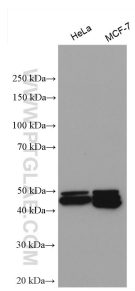
For technical support and original validation data for this product please contact:

T: 1 (888) 4PTGLAB (1-888-478-4522) (toll free in USA), or 1(312) 455-8498 (outside USA)

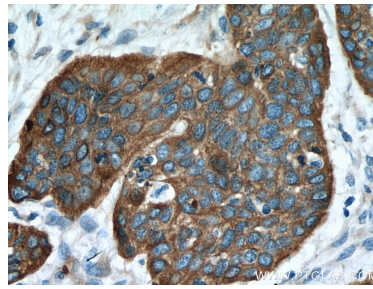
E: proteintech@ptglab.com
W: ptglab.com

This product is exclusively available under Proteintech Group brand and is not available to purchase from any other manufacturer.

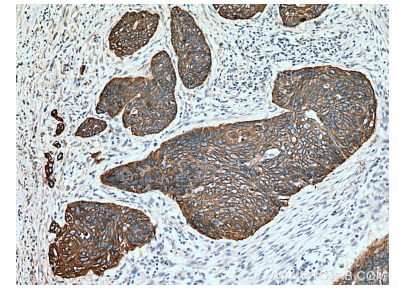
Données de validation sélectionnées



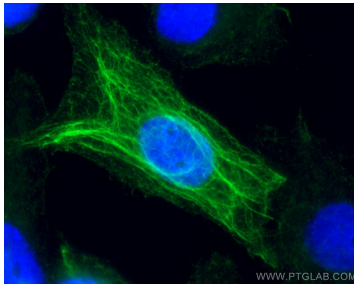
Various lysates were subjected to SDS PAGE followed by western blot with 17265-1-AP (Cytokeratin 16 antibody) at dilution of 1:10000 incubated at room temperature for 1.5 hours.



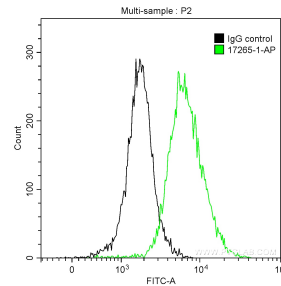
Immunohistochemical analysis of paraffin-embedded human oesophagus cancer tissue slide using 17265-1-AP (Cytokeratin 16 antibody) at dilution of 1:1000 (under 40x lens). Heat mediated antigen retrieval with Tris-EDTA buffer (pH 9.0).



Immunohistochemical analysis of paraffin-embedded human oesophagus cancer tissue slide using 17265-1-AP (Cytokeratin 16 antibody) at dilution of 1:1000 (under 10x lens). Heat mediated antigen retrieval with Tris-EDTA buffer (pH 9.0).



Immunofluorescent analysis of (-20°C Ethanol) fixed A431 cells using Cytokeratin 16 antibody (17265-1-AP) at dilution of 1:200 and CoraLite®488-Conjugated AffiniPure Goat Anti-Rabbit IgG(H+L).



1×10^6 A431 cells were intracellularly stained with 0.2 μ g Anti-Human Cytokeratin 16 (17265-1-AP) and CoraLite®488-Conjugated AffiniPure Goat Anti-Rabbit IgG(H+L) at dilution 1:1000 (green), and 0.2 μ g Control Antibody. Cells were fixed with 90% MeOH.