

À des fins de recherche uniquement

# Anticorps Polyclonal de lapin anti-MRPS27



Numéro de catalogue: 17280-1-AP

Phare

25 Publications

## Informations de base

Numéro de catalogue:  
17280-1-AP

Taille:  
150ul, Concentration: 550 µg/ml by Nanodrop and 353 µg/ml by Bradford method using BSA as the standard;

Hôte:  
Lapin

Isotype:  
IgG

Immunogen Catalog Number:  
AG11047

Numéro d'acquisition GenBank:  
BC030521

Identification du gène (NCBI):  
23107

Nom complet:  
mitochondrial ribosomal protein S27

MW calculé  
168 aa, 19 kDa, 48 kDa

MW observés:  
48 kDa

Méthode de purification:  
Purification par affinité contre l'antigène

Dilutions recommandées:  
WB 1:500-1:2000  
IP 0.5-4.0 ug for IP and 1:500-1:2000 for WB  
IHC 1:20-1:200  
IF 1:50-1:500

## Applications

Applications testées:  
IF, IHC, IP, WB, ELISA

Demandes citées:  
IF, WB

Spécificité de l'espèce:  
Humain, rat, souris

Espèces citées:  
Humain, souris

**Remarque-IHC: il est suggéré de démasquer l'antigène avec un tampon de TE buffer pH 9,0; (\*) À défaut, 'le démasquage de l'antigène peut être 'effectué avec un tampon citrate pH 6,0.**

Contrôles positifs:

WB : cellules A431, tissu cardiaque humain, tissu de muscle squelettique humain

IP : cellules A431,

IHC : tissu rénal humain, tissu pulmonaire humain, tissu splénique humain, tissu testiculaire humain

IF : cellules HepG2,

## Informations générales

Genes encoding PPR (pentatricopeptide repeat)-containing proteins constitute one of the largest gene families in plants. The majority of these proteins are predicted to target organelles and to bind to RNA. Strikingly, there is a dearth of these proteins in mammals, although genomic searches reveal six candidates, all of which are also predicted to target the mitochondrion. One of these proteins, MRPS27 is participated in transcription and translation respectively. [PMID:18939947] MRPS27 is a component of the small subunit of the mitochondrial ribosome that is encoded by the nuclear genome [PMID: 11279123].

## Publications notables

Autrice	Pubmed ID	Journal	Application
Uwe Richter	30262910	Nat Commun	WB
Marie Bisconti	36120567	Front Cell Dev Biol	IF
Uwe Richter	26504172	J Cell Biol	WB

## Stockage

Stockage:

Stocker à -20°C. Stable pendant un an après l'expédition.

Tampon de stockage:

PBS avec azoture de sodium à 0,02 % et glycérol à 50 % pH 7,3

L'aliquotage n'est pas nécessaire pour le stockage à -20C

\*\*\* Les 20ul contiennent 0,1% de BSA.

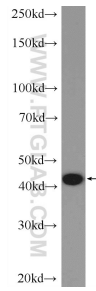
For technical support and original validation data for this product please contact:

T: 1 (888) 4PTGLAB (1-888-478-4522) (toll free in USA), or 1(312) 455-8498 (outside USA)

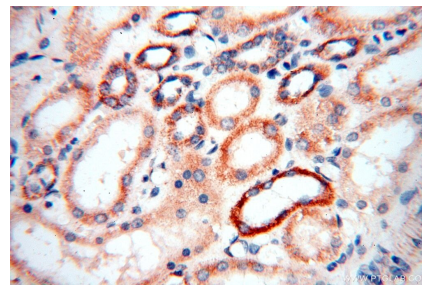
E: proteintech@ptglab.com  
W: ptglab.com

This product is exclusively available under Proteintech Group brand and is not available to purchase from any other manufacturer.

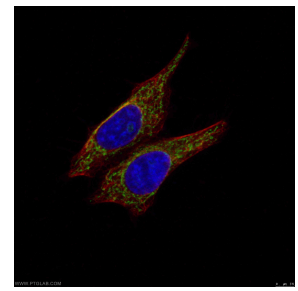
## Données de validation sélectionnées



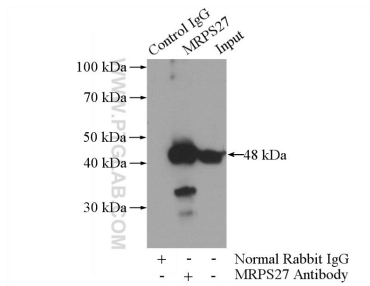
A431 cells were subjected to SDS PAGE followed by western blot with 17280-1-AP (MRPS27 Antibody) at dilution of 1:1000 incubated at room temperature for 1.5 hours.



Immunohistochemical analysis of paraffin-embedded human kidney using 17280-1-AP (MRPS27 antibody) at dilution of 1:100 (under 40x lens).



Immunofluorescent analysis of (-20°C Ethanol) fixed HepG2 cells using MRPS27 rabbit poly (17280-1-AP, Green) and KRT18 mouse mAb (66187-1-Ig, Red) at dilution of 1:50, further stained with Alexa Fluor 488-Conjugated AffiniPure Goat Anti-Rabbit IgG(H+L) for 17280-1-AP, and Alexa Fluor 594-conjugated AffiniPure Goat Anti-Mouse IgG (H+L) for 66187-1-Ig.



IP Result of anti-MRPS27 (IP:17280-1-AP, 3ug; Detection:17280-1-AP 1:1000) with A431 cells lysate 1520ug.