

À des fins de recherche uniquement

Anticorps Polyclonal de lapin anti-EIF4E3



Numéro de catalogue: 17282-1-AP

Phare

9 Publications

Informations de base

Numéro de catalogue:
17282-1-AP

Taille:
150ul, Concentration: 300 µg/ml by Nanodrop and 273 µg/ml by Bradford method using BSA as the standard;

Hôte:
Lapin

Isotype:
IgG

Immunogen Catalog Number:
AG11056

Numéro d'acquisition GenBank:
BC031289

Identification du gène (NCBI):
317649

Nom complet:
eukaryotic translation initiation factor 4E family member 3

MW calculé

24 kDa

MW observés:

24-30 kDa

Méthode de purification:
Purification par affinité contre l'antigène

Dilutions recommandées:
WB 1:500-1:3000
IF 1:10-1:100

Applications

Applications testées:
IF, WB, ELISA

Demandes citées:
IF, IHC, IP, WB

Spécificité de l'espèce:
Humain, rat, souris

Espèces citées:
Humain, souris

Contrôles positifs:

WB : cellules HeLa, cellules A549, cellules HepG2, tissu cardiaque de souris

IF : cellules HeLa,

Informations générales

EIF4E3, also known as Eukaryotic translation initiation factor 4E type 3, is a 224 amino acid protein, which recognizes and binds the 7-methylguanosine-containing mRNA cap during an early step in the initiation of protein synthesis. EIF4E3 acts as a tissue-specific tumor suppressor. For instance, eIF4E3 inhibits expression of both mRNA export and translation targets of eIF4E1, consistent with its nuclear and cytoplasmic localization. Importantly, eIF4E3 overexpression represses oncogenic transformation. (PMID: 23587918). EIF4E3 exists two isoforms with MV 24 kDa and 13 kDa.

Publications notables

Autrice	Pubmed ID	Journal	Application
Jun Pang	32953883	Biomed Res Int	WB
Nourhan Abdelfattah	30382096	Nat Commun	WB,IF
Irene Riz	27626179	Oncotarget	WB

Stockage

Stockage:

Stocker à -20°C. Stable pendant un an après l'expédition.

Tampon de stockage:

PBS avec azoture de sodium à 0,02 % et glycérol à 50 % pH 7,3

L'aliquotage n'est pas nécessaire pour le stockage à -20C

*** Les 20ul contiennent 0,1% de BSA.

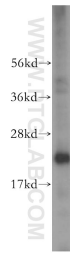
For technical support and original validation data for this product please contact:

T: 1 (888) 4PTGLAB (1-888-478-4522) (toll free in USA), or 1(312) 455-8498 (outside USA)

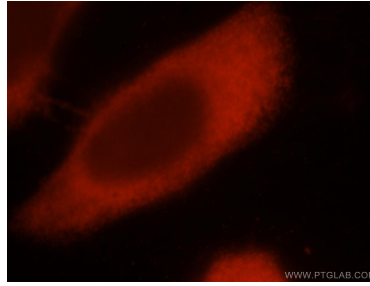
E: proteintech@ptglab.com
W: ptglab.com

This product is exclusively available under Proteintech Group brand and is not available to purchase from any other manufacturer.

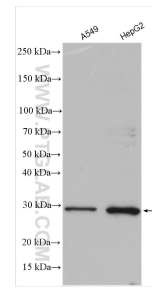
Données de validation sélectionnées



HeLa cells were subjected to SDS PAGE followed by western blot with 17282-1-AP (EIF4E3 antibody) at dilution of 1:500 incubated at room temperature for 1.5 hours.



Immunofluorescent analysis of HeLa cells, using EIF4E3 antibody 17282-1-AP at 1:25 dilution and Rhodamine-labeled goat anti-rabbit IgG (red).



Various lysates were subjected to SDS PAGE followed by western blot with 17282-1-AP (EIF4E3 antibody) at dilution of 1:500 incubated at room temperature for 1.5 hours.