

À des fins de recherche uniquement

# Anticorps Polyclonal de lapin anti-MYL7



Numéro de catalogue: 17283-1-AP

15 Publications

## Informations de base

Numéro de catalogue:

17283-1-AP

Taille:

150ul, Concentration: 650 µg/ml by Nanodrop;

Hôte:

Lapin

Isotype:

IgG

Immunogen Catalog Number:

AG11058

Numéro d'acquisition GenBank:

BC027915

Identification du gène (NCBI):

58498

Nom complet:

myosin, light chain 7, regulatory

MW calculé

175 aa, 19 kDa

MW observés:

19 kDa

Méthode de purification:

Purification par affinité contre l'antigène

Dilutions recommandées:

WB 1:1000-1:4000

IP 0.5-4.0 µg for IP and 1:500-1:1000 for WB

IHC 1:50-1:500

IF 1:50-1:500

## Applications

Applications testées:

FC, IF, IHC, IP, WB, ELISA

Demandes citées:

IF, IHC, WB

Spécificité de l'espèce:

Humain, rat, souris

Espèces citées:

Humain, rat, souris

Contrôles positifs:

WB : tissu cardiaque de souris, tissu de muscle squelettique de rat, tissu de muscle squelettique de souris

IP : tissu cardiaque de souris,

IHC : tissu cardiaque de souris, tissu cardiaque humain

IF : tissu cardiaque de souris,

**Remarque-IHC: il est suggéré de démasquer l'antigène avec un tampon de TE buffer pH 9,0; (\*) À défaut, le démasquage de l'antigène peut être effectué avec un tampon citrate pH 6,0.**

## Informations générales

MYL7, also known as myosin light chain 2a (MLC2a), is essential for heart development. The expression of MYL7 in heart is predominantly restricted to the atrium. So its expression has been considered as useful marker for atrial cardiomyocytes.

## Publications notables

Autrice	Pubmed ID	Journal	Application
Yuanbiao Zhao	26354680	Nat Commun	IF
Farhad Khosravi	35453733	Biology (Basel)	WB
Xiangyu Zhang	35246800	Stem Cell Rev Rep	IF

## Stockage

Stockage:

Stocker à -20°C. Stable pendant un an après l'expédition.

Tampon de stockage:

PBS avec azoture de sodium à 0,02 % et glycérol à 50 % pH 7,3

L'aliquotage n'est pas nécessaire pour le stockage à -20C

\*\*\* Les 20ul contiennent 0,1% de BSA.

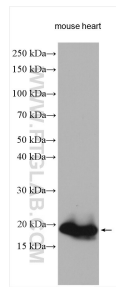
For technical support and original validation data for this product please contact:

T: 1 (888) 4PTGLAB (1-888-478-4522) (toll free in USA), or 1(312) 455-8498 (outside USA)

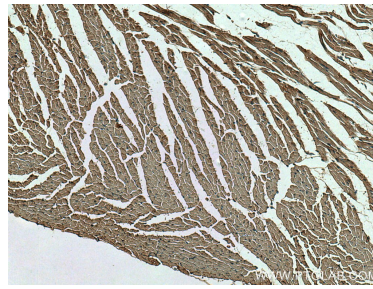
E: [proteintech@ptglab.com](mailto:proteintech@ptglab.com)  
W: [ptglab.com](http://ptglab.com)

This product is exclusively available under Proteintech Group brand and is not available to purchase from any other manufacturer.

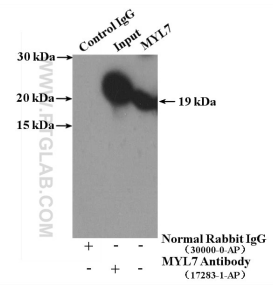
## Données de validation sélectionnées



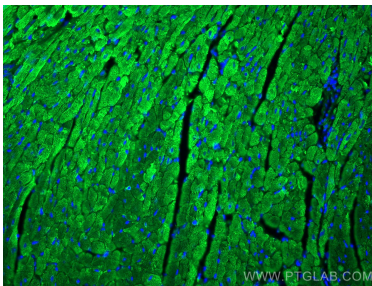
Mouse heart lysates were subjected to SDS PAGE followed by western blot with 17283-1-AP (MYL7 antibody) at dilution of 1:2000 incubated at room temperature for 1.5 hours.



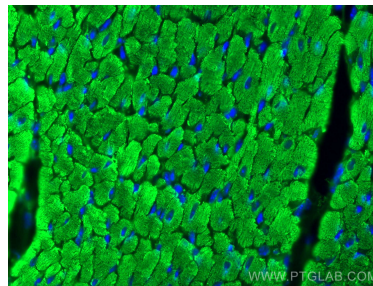
Immunohistochemical analysis of paraffin-embedded mouse heart tissue slide using 17283-1-AP (MYL7 antibody) at dilution of 1:200 (under 10x lens). Heat mediated antigen retrieval with Tris-EDTA buffer (pH 9.0).



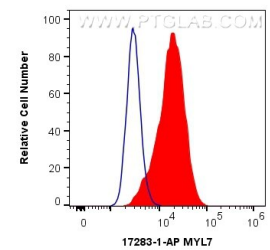
IP Result of anti-MYL7 (IP:17283-1-AP, 4ug; Detection:17283-1-AP 1:700) with mouse heart tissue lysate 4000ug.



Immunofluorescent analysis of (4% PFA) fixed mouse heart tissue using MYL7 antibody (17283-1-AP) at dilution of 1:200 and CoraLite®488-Conjugated AffiniPure Goat Anti-Rabbit IgG(H+L).



Immunofluorescent analysis of (4% PFA) fixed mouse heart tissue using MYL7 antibody (17283-1-AP) at dilution of 1:200 and CoraLite®488-Conjugated AffiniPure Goat Anti-Rabbit IgG(H+L).



$1 \times 10^6$  C2C12 cells were intracellularly stained with 0.5 ug Anti-Human MYL7 (17283-1-AP) and CoraLite®488-Conjugated AffiniPure Goat Anti-Rabbit IgG(H+L) at dilution 1:1000 (red), or 0.5 ug Control Antibody. Cells were fixed with 4% PFA and permeabilized with Flow Cytometry Perm Buffer (PF00011-C).