

À des fins de recherche uniquement

Anticorps Polyclonal de lapin anti-RPS4Y1



Numéro de catalogue: 17296-1-AP

Informations de base

Numéro de catalogue:
17296-1-AP

Taille:
150ul, Concentration: 180 µg/ml by
Nanodrop and 180 µg/ml by Bradford
method using BSA as the standard;

Hôte:
Lapin

Isotype:
IgG

Immunogen Catalog Number:
AG11176

Numéro d'acquisition GenBank:
BC010286

Identification du gène (NCBI):
6192

Nom complet:
ribosomal protein S4, Y-linked 1

MW calculé
263 aa, 29 kDa

MW observés:
29 kDa

Méthode de purification:
Purification par affinité contre
l'antigène

Dilutions recommandées:
WB 1:500-1:1000
IF 1:10-1:100

Applications

Applications testées:
IF, WB, ELISA

Spécificité de l'espèce:
Humain, rat, souris

Contrôles positifs:

WB : cellules DU 145, cellules A2780, cellules HeLa,
cellules SKOV-3, tissu ovarien de souris, tissu
testiculaire de souris

IF : cellules HepG2,

Informations générales

RPS4Y1, a Y-linked gene in the human, encodes a subunit of ribosomal protein S4, a component of the 40S subunit and 60S subunit. Ribosomal protein S4 is the only ribosomal protein known to be encoded by more than one gene, namely this gene, RPS4Y2 and the ribosomal protein S4, X-linked (RPS4X). RPS4Y maps to a 90-kb segment that has been implicated in Turner syndrome. As a homolog with RPS4X, the antibody can recognize endogenous level of RPS4Y and RPS4X, at 29-32kDa.

Stockage

Stockage:

Stocker à -20°C. Stable pendant un an après l'expédition.

Tampon de stockage:

PBS avec azoture de sodium à 0,02 % et glycérol à 50 % pH 7,3

L'aliquotage n'est pas nécessaire pour le stockage à -20C

***** Les 20ul contiennent 0,1% de BSA.**

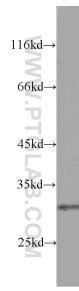
For technical support and original validation data for this product please contact:

T: 1 (888) 4PTGLAB (1-888-478-4522) (toll free
in USA), or 1(312) 455-8498 (outside USA)

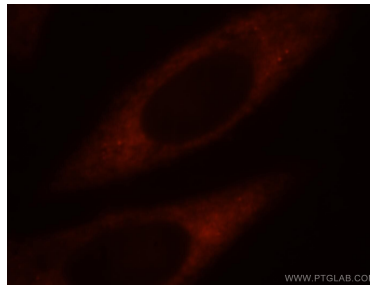
E: proteintech@ptglab.com
W: ptglab.com

This product is exclusively available under Proteintech Group brand and is not available to purchase from any other manufacturer.

Données de validation sélectionnées



DU 145 cells were subjected to SDS PAGE followed by western blot with 17296-1-AP (RPS4Y1 antibody) at dilution of 1:1000 incubated at room temperature for 1.5 hours.



Immunofluorescent analysis of HepG2 cells, using RPS4Y1 antibody 17296-1-AP at 1:25 dilution and Rhodamine-labeled goat anti-rabbit IgG (red).