

À des fins de recherche uniquement

# Anticorps Polyclonal de lapin anti-Cytokeratin 20



Numéro de catalogue: 17329-1-AP

11 Publications

## Informations de base

Numéro de catalogue: 17329-1-AP	Numéro d'acquisition GenBank: BC031559	Méthode de purification: Purification par affinité contre l'antigène
Taille: 150ul, Concentration: 1100 µg/ml by Nanodrop;	Identification du gène (NCBI): 54474	Dilutions recommandées: WB 1:2000-1:16000 IHC 1:1000-1:4000 IF 1:1000-1:4000
Hôte: Lapin	Nom complet: keratin 20	
Isotype: IgG	MW calculé: 424 aa, 48 kDa	
Immunogen Catalog Number: AG11308	MW observés: 46 kDa	

## Applications

### Applications testées:

FC, IF, IHC, WB, ELISA

### Demandes citées:

IF, IHC, WB

### Spécificité de l'espèce:

Humain, Lapin, rat, souris

### Espèces citées:

Humain, souris

### Contrôles positifs:

WB : cellules COLO 320, cellules HeLa, cellules HT-29, cellules MCF-7

IHC : tissu de côlon humain, tissu d'appendicite humaine, tissu de cancer de l'estomac humain, tissu de carcinome urothélial humain

IF : cellules HT-29, cellules HeLa

**Remarque-IHC: il est suggéré de démasquer l'antigène avec un tampon de TE buffer pH 9,0; (\*) À défaut, le démasquage de l'antigène peut être effectué avec un tampon citrate pH 6,0.**

## Informations générales

Keratins are a large family of proteins that form the intermediate filament cytoskeleton of epithelial cells, which are classified into two major sequence types. Type I keratins are a group of acidic intermediate filament proteins, including K9-K23, and the hair keratins Ha1-Ha8. Type II keratins are the basic or neutral counterparts to the acidic type I keratins, including K1-K8, and the hair keratins, Hb1-Hb6. Keratin 20 is a type I cytokeratin. It is a major cellular protein of mature enterocytes and goblet cells and is specifically found in the gastric and intestinal mucosa.

## Publications notables

Autrice	Pubmed ID	Journal	Application
Pingping Zhu	30224759	Nat Cell Biol	WB
Ziyi Wang	36387215	Front Oncol	WB
Qi Cheng	35561877	Cancer Lett	IF

## Stockage

### Stockage:

Stocker à -20°C. Stable pendant un an après l'expédition.

### Tampon de stockage:

PBS avec azoture de sodium à 0,02 % et glycérol à 50 % pH 7,3

L'aliquotage n'est pas nécessaire pour le stockage à -20C

\*\*\* Les 20ul contiennent 0,1% de BSA.

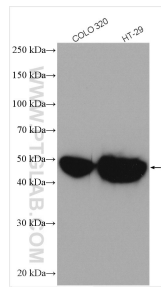
For technical support and original validation data for this product please contact:

T: 1 (888) 4PTGLAB (1-888-478-4522) (toll free in USA), or 1(312) 455-8498 (outside USA)

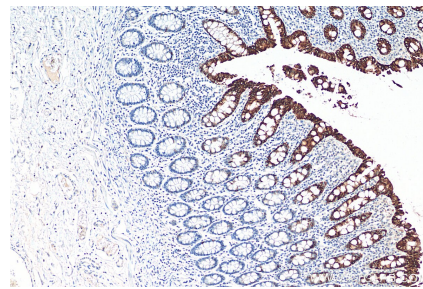
E: [proteintech@ptglab.com](mailto:proteintech@ptglab.com)  
W: [ptglab.com](http://ptglab.com)

This product is exclusively available under Proteintech Group brand and is not available to purchase from any other manufacturer.

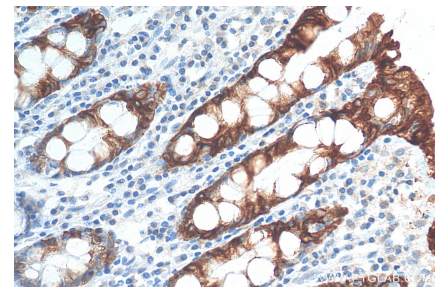
## Données de validation sélectionnées



Various lysates were subjected to SDS PAGE followed by western blot with 17329-1-AP (Cytokeratin 20 antibody) at dilution of 1:8000 incubated at room temperature for 1.5 hours.



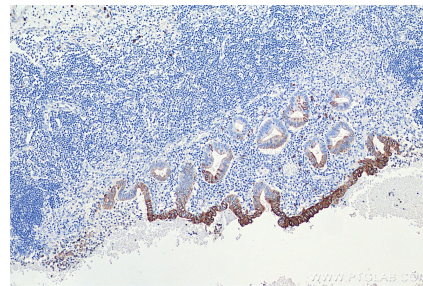
Immunohistochemical analysis of paraffin-embedded human colon tissue slide using 17329-1-AP (Cytokeratin 20 antibody) at dilution of 1:2000 (under 10x Lens). Heat mediated antigen retrieval with Tris-EDTA buffer (pH 9.0).



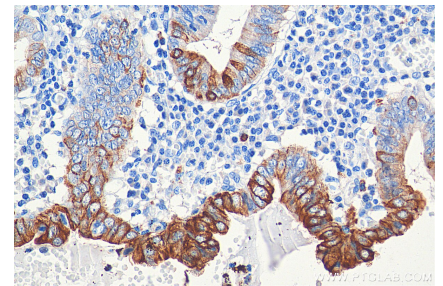
Immunohistochemical analysis of paraffin-embedded human colon tissue slide using 17329-1-AP (Cytokeratin 20 antibody) at dilution of 1:2000 (under 40x Lens). Heat mediated antigen retrieval with Tris-EDTA buffer (pH 9.0).



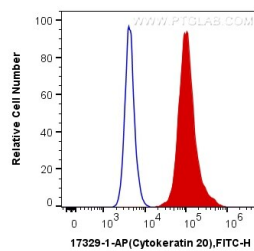
Immunofluorescent analysis of (-20°C Methanol) fixed HT-29 cells using Cytokeratin 20 antibody (17329-1-AP) at dilution of 1:2000 and CoraLite®488-Conjugated AffiniPure Goat Anti-Rabbit IgG(H+L).



Immunohistochemical analysis of paraffin-embedded human appendicitis tissue slide using 17329-1-AP (Cytokeratin 20 antibody) at dilution of 1:5000 (under 10x lens). Heat mediated antigen retrieval with Tris-EDTA buffer (pH 9.0).



Immunohistochemical analysis of paraffin-embedded human appendicitis tissue slide using 17329-1-AP (Cytokeratin 20 antibody) at dilution of 1:5000 (under 40x lens). Heat mediated antigen retrieval with Tris-EDTA buffer (pH 9.0).



$1 \times 10^6$  HT-29 cells were intracellularly stained with 0.2 ug Anti-Human Cytokeratin 20 (17329-1-AP) and CoraLite®488-Conjugated AffiniPure Goat Anti-Rabbit IgG(H+L) at dilution 1:1000 (red), or 0.2 ug Control Antibody. Cells were fixed with 4% PFA and permeabilized with Flow Cytometry Perm Buffer (PF00011-C).