

À des fins de recherche uniquement

Anticorps Polyclonal de lapin anti-ALDH1L1



Numéro de catalogue: 17390-1-AP

6 Publications

Informations de base

Numéro de catalogue:
17390-1-AP

Taille:
150ul, Concentration: 300 µg/ml by Nanodrop and 173 µg/ml by Bradford method using BSA as the standard;

Hôte:
Lapin

Isotype:
IgG

Immunogen Catalog Number:
AG11285

Numéro d'acquisition GenBank:
BC027241

Identification du gène (NCBI):
10840

Nom complet:
aldehyde dehydrogenase 1 family, member L1

MW calculé:
99 kDa

MW observés:
100 kDa

Méthode de purification:
Purification par affinité contre l'antigène

Dilutions recommandées:
WB 1:2000-1:10000
IP 0.5-4.0 ug for IP and 1:500-1:1000 for WB
IHC 1:100-1:400
IF 1:50-1:500

Applications

Applications testées:
IF, IHC, IP, WB, ELISA

Demandes citées:
IF, IHC, WB

Spécificité de l'espèce:
Humain, rat, souris

Espèces citées:
Humain, souris

Remarque-IHC: il est suggéré de démasquer l'antigène avec un tampon de TE buffer pH 9,0; (*) A défaut, 'le démasquage de l'antigène peut être 'effectué avec un tampon citrate pH 6,0.

Contrôles positifs:

WB : tissu hépatique de souris, foie de rat, foie de souris

IP : tissu hépatique de souris,

IHC : tissu de gliome humain, tissu cérébral de souris

IF : tissu cérébral de souris,

Informations générales

Aldehyde dehydrogenase 1 family member L1 (ALDH1L1), belongs to the aldehyde dehydrogenase family of proteins and is responsible for formate oxidation in vivo. Loss of ALDH1L1 is associated with decreased apoptosis, increased cell motility, and cancer progression. ALDH1L1 catalyzes the conversion of 10-formyltetrahydrofolate, nicotinamide adenine dinucleotide phosphate (NADP+), and water to tetrahydrofolate, NADPH, and carbon dioxide. ALDH1L1 has some isoforms with MW of 99, 88 and 55 kDa.

Publications notables

Autrice	Pubmed ID	Journal	Application
Li Cui	34533844	J Pineal Res	WB
Masayoshi Kano	33298969	NPJ Parkinsons Dis	IHC,WB
Hao Qian	32581380	Nature	IF

Stockage

Stockage:

Stocker à -20°C. Stable pendant un an après l'expédition.

Tampon de stockage:

PBS avec azoture de sodium à 0,02 % et glycérol à 50 % pH 7,3

L'aliquotage n'est pas nécessaire pour le stockage à -20C

*** Les 20ul contiennent 0,1% de BSA.

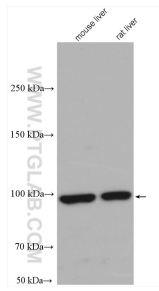
For technical support and original validation data for this product please contact:

T: 1 (888) 4PTGLAB (1-888-478-4522) (toll free in USA), or 1(312) 455-8498 (outside USA)

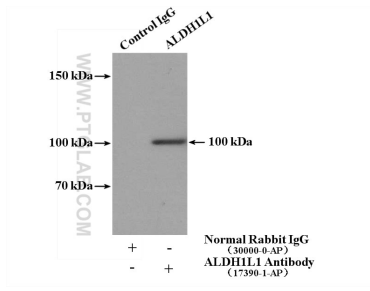
E: proteintech@ptglab.com
W: ptglab.com

This product is exclusively available under Proteintech Group brand and is not available to purchase from any other manufacturer.

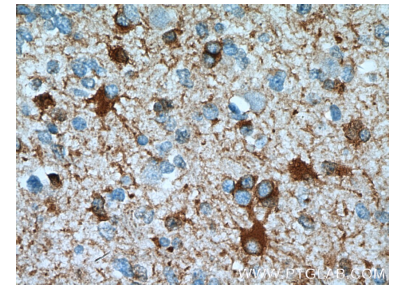
Données de validation sélectionnées



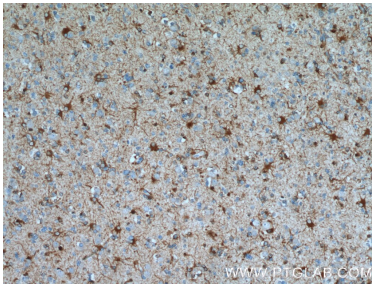
mouse liver tissue were subjected to SDS PAGE followed by western blot with 17390-1-AP (ALDH1L1 antibody) at dilution of 1:5000 incubated at room temperature for 1.5 hours.



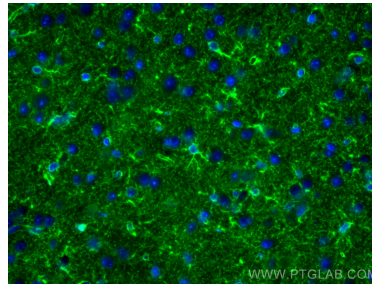
IP Result of anti-ALDH1L1 (IP:17390-1-AP, 4ug; Detection:17390-1-AP 1:500) with mouse liver tissue lysate 4000ug.



Immunohistochemical analysis of paraffin-embedded human gliomas tissue slide using 17390-1-AP (ALDH1L1 Antibody) at dilution of 1:200 (under 40x lens). Heat mediated antigen retrieval with Tris-EDTA buffer (pH 9.0).



Immunohistochemical analysis of paraffin-embedded human gliomas tissue slide using 17390-1-AP (ALDH1L1 Antibody) at dilution of 1:200 (under 10x lens). Heat mediated antigen retrieval with Tris-EDTA buffer (pH 9.0).



Immunofluorescent analysis of (4% PFA) fixed mouse brain tissue using ALDH1L1 antibody (17390-1-AP) at dilution of 1:200 and CoraLite® 488-Conjugated AffiniPure Goat Anti-Rabbit IgG(H+L).