

À des fins de recherche uniquement

Anticorps Polyclonal de lapin anti-Cytokeratin 6B



Numéro de catalogue: 17391-1-AP

Phare

2 Publications

Informations de base

Numéro de catalogue:
17391-1-AP

Taille:
150ul, Concentration: 400 µg/ml by Nanodrop and 213 µg/ml by Bradford method using BSA as the standard;

Hôte:
Lapin

Isotype:
IgG

Immunogen Catalog Number:
AG11288

Numéro d'acquisition GenBank:
BC034535

Identification du gène (NCBI):
3854

Nom complet:
keratin 6B

MW calculé:
564 aa, 60 kDa

MW observés:
60 kDa

Méthode de purification:
Purification par affinité contre l'antigène

Dilutions recommandées:
WB 1:1600-1:5000
IHC 1:50-1:500
IF 1:200-1:800

Applications

Applications testées:
FC, IF, IHC, WB, ELISA

Demandes citées:
IHC, WB

Spécificité de l'espèce:
Humain, rat, souris

Espèces citées:
Humain, souris

Remarque-IHC: il est suggéré de démasquer l'antigène avec un tampon de TE buffer pH 9,0; (*) A défaut, le démasquage de l'antigène peut être effectué avec un tampon citrate pH 6,0.

Contrôles positifs:

WB : tissu cutané de souris, cellules A431, tissu cutané de rat

IHC : tissu de cancer du poumon humain, tissu amygdalien humain, tissu de cancer du col de l'utérus humain, tissu de cancer du sein humain, tissu œsophagien humain

IF : cellules HeLa,

Informations générales

Keratins are a large family of proteins that form the intermediate filament cytoskeleton of epithelial cells, which are classified into two major sequence types. Type I keratins are a group of acidic intermediate filament proteins, including K9-K23, and the hair keratins Ha1-Ha8. Type II keratins are the basic or neutral counterparts to the acidic type I keratins, including K1-K8, and the hair keratins, Hb1-Hb6. Keratin 6 is a type II keratin. It is used as a marker for epidermal hyperproliferation and differentiation. Three keratin 6 isoforms were found, ketatin 6A, 6B, and 6C. They share more than 99% identical DNA sequence.

Publications notables

| Autrice | Pubmed ID | Journal | Application |
|-----------------|-----------|-------------------|-------------|
| Qiang Song | 35794606 | J Transl Med | WB |
| Cui Chang-Yi CY | 23439395 | J Invest Dermatol | IHC |

Stockage

Stockage:
Stocker à -20°C. Stable pendant un an après l'expédition.

Tampon de stockage:
PBS avec azoture de sodium à 0,02 % et glycérol à 50 % pH 7,3
L'aliquotage n'est pas nécessaire pour le stockage à -20C

*** Les 20ul contiennent 0,1% de BSA.

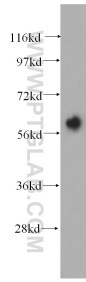
For technical support and original validation data for this product please contact:

T: 1 (888) 4PTGLAB (1-888-478-4522) (toll free in USA), or 1(312) 455-8498 (outside USA)

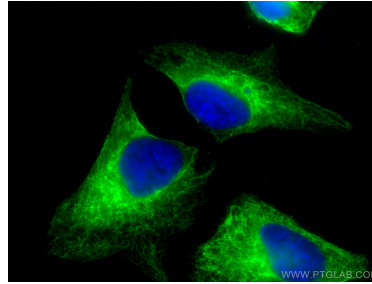
E: proteintech@ptglab.com
W: ptglab.com

This product is exclusively available under Proteintech Group brand and is not available to purchase from any other manufacturer.

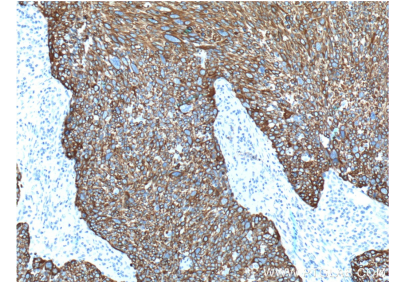
Données de validation sélectionnées



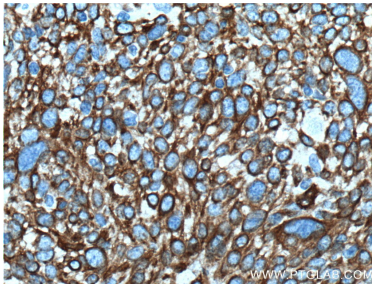
mouse skin tissue were subjected to SDS PAGE followed by western blot with 17391-1-AP (Cytokeratin 6B antibody) at dilution of 1:1000 incubated at room temperature for 1.5 hours.



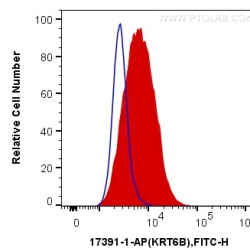
Immunofluorescent analysis of (-20°C Methanol) fixed HeLa cells using Cytokeratin 6B antibody (17391-1-AP) at dilution of 1:400 and CoraLite®488-Conjugated AffiniPure Goat Anti-Rabbit IgG(H+L).



Immunohistochemical analysis of paraffin-embedded human lung cancer tissue slide using 17391-1-AP (Cytokeratin 6B antibody at dilution of 1:1000 (under 10x lens). Heat mediated antigen retrieval with Tris-EDTA buffer (pH 9.0).



Immunohistochemical analysis of paraffin-embedded human lung cancer tissue slide using 17391-1-AP (Cytokeratin 6B antibody at dilution of 1:1000 (under 40x lens). Heat mediated antigen retrieval with Tris-EDTA buffer (pH 9.0).



1X10⁶ HeLa cells were intracellularly stained with 0.2 ug Anti-Human Cytokeratin 6B (17391-1-AP) and CoraLite®488-Conjugated AffiniPure Goat Anti-Rabbit IgG(H+L) at dilution 1:1000 (red), or 0.2 ug Control Antibody. Cells were fixed with 4% PFA and permeabilized with Flow Cytometry Perm Buffer (PF00011-C).