

À des fins de recherche uniquement

# Anticorps Polyclonal de lapin anti- Peripherin



Numéro de catalogue: 17399-1-AP

1 Publications

## Informations de base

Numéro de catalogue:

17399-1-AP

Taille:

150ul, Concentration: 300 µg/ml by Nanodrop and 200 µg/ml by Bradford method using BSA as the standard;

Hôte:

Lapin

Isotype:

IgG

Immunogen Catalog Number:

AG11365

Numéro d'acquisition GenBank:

BC032703

Identification du gène (NCBI):

5630

Nom complet:

peripherin

MW calculé

470 aa, 54 kDa

MW observés:

54 kDa

Méthode de purification:

Purification par affinité contre l'antigène

Dilutions recommandées:

WB 1:1000-1:4000

IHC 1:50-1:500

## Applications

Applications testées:

FC, IHC, WB, ELISA

Demandes citées:

IF

Spécificité de l'espèce:

Humain, rat, souris

Espèces citées:

rat

**Remarque-IHC: il est suggéré de démasquer l'antigène avec un tampon de TE buffer pH 9,0; (\*) A défaut, le démasquage de l'antigène peut être effectué avec un tampon citrate pH 6,0.**

Contrôles positifs:

WB : tissu de côlon de souris, cellules COLO 320, tissu de côlon humain

IHC : tissu cérébral de souris, tissu cérébral de rat, tissu cérébral humain, tissu de côlon humain

## Informations générales

Peripherin is a neuron-specific intermediate filament protein that is particularly expressed in peripheral nervous system. It is used to study peripheral nerve development and regeneration, as it is highly expressed during elongation of axon. Peripherin is a routine marker for unmyelinated neurons in trigeminal ganglion (TG) and the dorsal root ganglion (DRG). Peripherin is also expressed in peri-insular areas of islets and it has been identified as a key autoantigen for type 1A diabetes.

## Publications notables

Autrice	Pubmed ID	Journal	Application
Xia Xiao	28298178	Biotechniques	IF

## Stockage

Stockage:

Stocker à -20°C. Stable pendant un an après l'expédition.

Tampon de stockage:

PBS avec azoture de sodium à 0,02 % et glycérol à 50 % pH 7,3

L'aliquotage n'est pas nécessaire pour le stockage à -20C

\*\*\* Les 20ul contiennent 0,1% de BSA.

For technical support and original validation data for this product please contact:

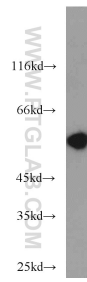
T: 1 (888) 4PTGLAB (1-888-478-4522) (toll free in USA), or 1(312) 455-8498 (outside USA)

E: [proteintech@ptglab.com](mailto:proteintech@ptglab.com)

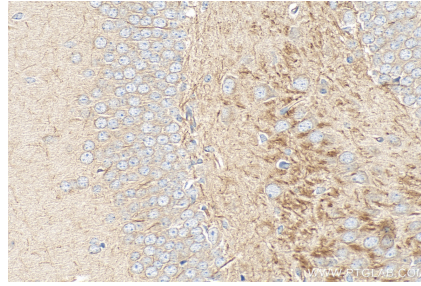
W: [ptglab.com](http://ptglab.com)

This product is exclusively available under Proteintech Group brand and is not available to purchase from any other manufacturer.

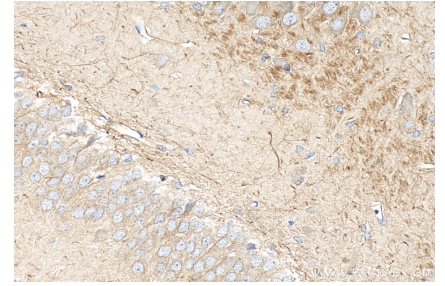
## Données de validation sélectionnées



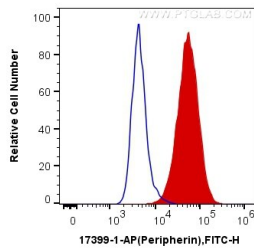
mouse colon tissue were subjected to SDS PAGE followed by western blot with 17399-1-AP (PRPH antibody) at dilution of 1:2000 incubated at room temperature for 1.5 hours.



Immunohistochemical analysis of paraffin-embedded mouse brain tissue slide using 17399-1-AP (Peripherin antibody) at dilution of 1:200 (under 40x lens). Heat mediated antigen retrieval with Tris-EDTA buffer (pH 9.0).



Immunohistochemical analysis of paraffin-embedded rat brain tissue slide using 17399-1-AP (Peripherin antibody) at dilution of 1:200 (under 40x lens). Heat mediated antigen retrieval with Tris-EDTA buffer (pH 9.0).



1X10<sup>6</sup> PC-12 cells were intracellularly stained with 0.4 ug Anti-Human Peripherin (17399-1-AP) and CoraLite®488-Conjugated AffiniPure Goat Anti-Rabbit IgG(H+L) at dilution 1:1000 (red), or 0.4 ug Control Antibody. Cells were fixed with 4% PFA and permeabilized with Flow Cytometry Perm Buffer (PF00011-C).