

À des fins de recherche uniquement

Anticorps Polyclonal de lapin anti-PLCL2



Numéro de catalogue: 17421-1-AP

2 Publications

Informations de base

Numéro de catalogue:

17421-1-AP

Numéro d'acquisition GenBank:

BC036392

Méthode de purification:

Purification par affinité contre l'antigène

Taille:

150ul, Concentration: 500 µg/ml by Nanodrop and 267 µg/ml by Bradford method using BSA as the standard;

Identification du gène (NCBI):

23228

Dilutions recommandées:

WB 1:1000-1:3000
IF 1:50-1:500

Hôte:

Lapin

MW calculé

126 kDa

Isotype:

IgG

MW observés:

126 kDa

Immunogen Catalog Number:

AG11443

Applications

Applications testées:

IF, WB, ELISA

Contrôles positifs:

WB : tissu cérébral de souris, tissu cérébral de rat

Demandes citées:

WB

IF : tissu cérébral de souris,

Spécificité de l'espèce:

Humain, rat, souris

Espèces citées:

souris

Informations générales

PLCL2, a novel phospholipase C-like protein, is expressed in lymphocytes and platelets. The expression of PLCL2 is associated with the proliferation of mature B cells in the immune system. PLCL2 is a new susceptibility loci for myocardial infarction. It has been shown that PLCL2 plays a key role in the pathogenesis of atherosclerosis and systemic sclerosis. There are three isoforms of PLCL2 protein and 17421-1-AP antibody detects the 126 kDa band in SDS-PAGE. (PMID: 24916648, 25880423)

Publications notables

Autrice	Pubmed ID	Journal	Application
Vanitha Bala	25404917	Front Physiol	WB
Mary C Peavey	33707208	Proc Natl Acad Sci U S A	WB

Stockage

Stockage:

Stocker à -20°C. Stable pendant un an après l'expédition.

Tampon de stockage:

PBS avec azoture de sodium à 0,02 % et glycérol à 50 % pH 7,3

L'aliquotage n'est pas nécessaire pour le stockage à -20C

*** Les 20ul contiennent 0,1% de BSA.

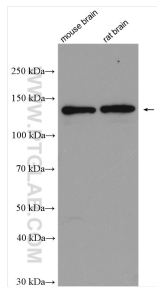
For technical support and original validation data for this product please contact:

T: 1 (888) 4PTGLAB (1-888-478-4522) (toll free in USA), or 1(312) 455-8498 (outside USA)

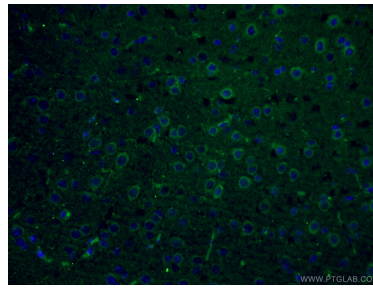
E: proteintech@ptglab.com
W: ptglab.com

This product is exclusively available under Proteintech Group brand and is not available to purchase from any other manufacturer.

Données de validation sélectionnées



Various lysates were subjected to SDS PAGE followed by western blot with 17421-1-AP (PLCL2 antibody) at dilution of 1:2000 incubated at room temperature for 1.5 hours.



Immunofluorescent analysis of (4% PFA) fixed mouse brain tissue using 17421-1-AP (PLCL2 antibody) at dilution of 1:50 and CoraLite488-Conjugated AffiniPure Goat Anti-Rabbit IgG(H+L).