

À des fins de recherche uniquement

Anticorps Polyclonal de lapin anti-CD33



Numéro de catalogue: 17425-1-AP

6 Publications

Informations de base

Numéro de catalogue:

17425-1-AP

Taille:

150ul, Concentration: 300 µg/ml by Nanodrop;

Hôte:

Lapin

Isotype:

IgG

Immunogen Catalog Number:

AG11490

Numéro d'acquisition GenBank:

BC028152

Identification du gène (NCBI):

945

Nom complet:

CD33 molecule

MW calculé

364 aa, 40 kDa

MW observés:

67 kDa

Méthode de purification:

Purification par affinité contre l'antigène

Dilutions recommandées:

WB 1:500-1:3000

IF 1:10-1:100

Applications

Applications testées:

FC, IF, WB, ELISA

Demandes citées:

IF, IHC

Spécificité de l'espèce:

Humain, souris

Espèces citées:

Humain, souris

Contrôles positifs:

WB : EL-4-B5 cells, cellules K-562, cellules THP-1

IF : cellules HepG2,

Informations générales

CD33, also referred to as Siglec-3, is a 67-kDa glycosylated transmembrane protein of sialic acid-binding immunoglobulin-like lectin (siglec) family. CD33 is expressed on monocytes, myeloid progenitors, granulocytes, mast cells, some T cells. It may mediate cell-to-cell adhesion and act as a receptor that inhibits the proliferation of normal and leukemic myeloid cells.

Publications notables

Autrice	Pubmed ID	Journal	Application
Zilong Zhang	35601487	Front Genet	IF
Xin Pang	32092078	PLoS One	IHC
Xing Huang	36090038	Front Mol Biosci	IHC

Stockage

Stockage:

Stocker à -20°C. Stable pendant un an après l'expédition.

Tampon de stockage:

PBS avec azoture de sodium à 0,02 % et glycérol à 50 % pH 7,3

L'aliquotage n'est pas nécessaire pour le stockage à -20C

*** Les 20ul contiennent 0,1% de BSA.

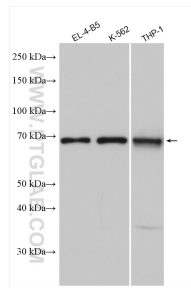
For technical support and original validation data for this product please contact:

T: 1 (888) 4PTGLAB (1-888-478-4522) (toll free in USA), or 1(312) 455-8498 (outside USA)

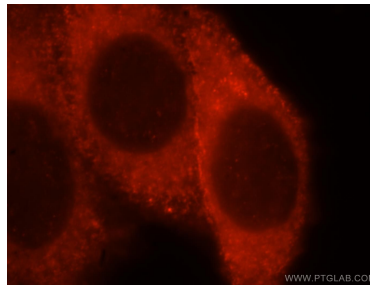
E: proteintech@ptglab.com
W: ptglab.com

This product is exclusively available under Proteintech Group brand and is not available to purchase from any other manufacturer.

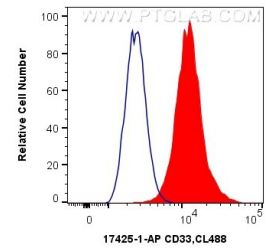
Données de validation sélectionnées



Various lysates were subjected to SDS PAGE followed by western blot with 17425-1-AP (CD33 antibody) at dilution of 1:1500 incubated at room temperature for 1.5 hours.



Immunofluorescent analysis of HepG2 cells, using CD33 antibody 17425-1-AP at 1:25 dilution and Rhodamine-labeled goat anti-rabbit IgG (red).



1X10⁶ THP-1 cells were intracellularly stained with 0.4 ug Anti-Human CD33 (17425-1-AP) and CoraLite@488-Conjugated AffiniPure Goat Anti-Rabbit IgG(H+L) at dilution 1:1000 (red), or 0.4 ug Control Antibody. Cells were fixed with 4% PFA and permeabilized with Flow Cytometry Perm Buffer (PF00011-C).