

À des fins de recherche uniquement

Anticorps Polyclonal de lapin anti-Transferrin



Numéro de catalogue: 17435-1-AP

Phare

41 Publications

Informations de base

Numéro de catalogue: 17435-1-AP	Numéro d'acquisition GenBank: BC059367	Méthode de purification: Purification par affinité contre l'antigène
Taille: 150ul, Concentration: 500 µg/ml by Nanodrop;	Identification du gène (NCBI): 7018	Dilutions recommandées: WB 1:1000-1:5000 IHC 1:50-1:500 IF 1:50-1:500
Hôte: Lapin	Nom complet: transferrin	
Isotype: IgG	MW calculé: 698 aa, 77 kDa	
Immunogen Catalog Number: AG11504	MW observés: 77 kDa	

Applications

Applications testées:

IF, IHC, WB, ELISA

Demandes citées:

IF, IHC, IP, WB

Spécificité de l'espèce:

Humain, rat, souris

Espèces citées:

Humain, rat, singe, souris

Contrôles positifs:

WB : échantillon d'urine humaine, tissu rénal de rat, tissu rénal de souris, tissu splénique de souris

IHC : tissu de cirrhose hépatique humain, tissu placentaire humain, tissu testiculaire humain

IF : cellules HepG2,

Remarque-IHC: il est suggéré de démasquer l'antigène avec un tampon de TE buffer pH 9,0; (*) À défaut, le démasquage de l'antigène peut être effectué avec un tampon citrate pH 6,0.

Informations générales

Serotransferrin(TF) is a 77 kDa secreted protein which is also named as transferrin, siderophilin, beta-1 metal-binding globulin and belongs to a family of homologous iron-binding glycoproteins that encompasses lactoferrin (found both intracellular and in secretions, including milk), melanotransferrin (present on melanoma cells) and ovotransferrin (present in egg white). TF is a multi-function protein with a primary role in transporting iron in a safe, redox-inactive state from absorption to utilization or storage sites around the body. The association of Tf with the immune system derives from its ability to restrict serum free-iron levels, creating low-iron environments where the infection capacity of pathogenic microorganisms is limited. TF is expressed predominantly in the liver and secreted in plasma, but lower amounts can be synthesized in other tissues such as the brain and the testis

Publications notables

Autrice	Pubmed ID	Journal	Application
Fen Liu	36129988	Sci Adv	WB
Zhongyang Lv	36137413	EBioMedicine	WB
Tong-Chun Xue	25242412	Oncol Rep	WB

Stockage

Stockage:

Stocker à -20°C. Stable pendant un an après l'expédition.

Tampon de stockage:

PBS avec azoture de sodium à 0,02 % et glycérol à 50 % pH 7,3

L'aliquotage n'est pas nécessaire pour le stockage à -20C

*** Les 20ul contiennent 0,1% de BSA.

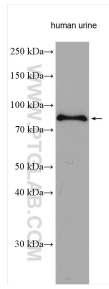
For technical support and original validation data for this product please contact:

T: 1 (888) 4PTGLAB (1-888-478-4522) (toll free in USA), or 1(312) 455-8498 (outside USA)

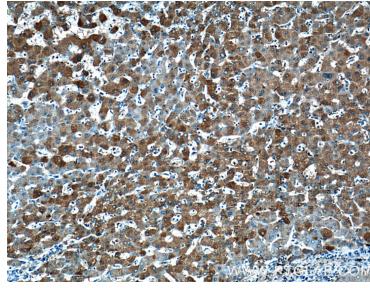
E: proteintech@ptglab.com
W: ptglab.com

This product is exclusively available under Proteintech Group brand and is not available to purchase from any other manufacturer.

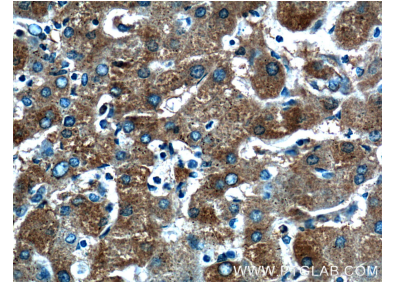
Données de validation sélectionnées



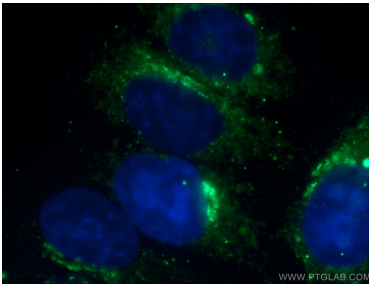
human urine lysates were subjected to SDS PAGE followed by western blot with 17435-1-AP (Transferrin antibody) at dilution of 1:1000 incubated at room temperature for 1.5 hours.



Immunohistochemical analysis of paraffin-embedded human hepatocirrhosis tissue slide using 17435-1-AP (Transferrin antibody at dilution of 1:200 (under 10x lens).



Immunohistochemical analysis of paraffin-embedded human hepatocirrhosis tissue slide using 17435-1-AP (Transferrin antibody at dilution of 1:200 (under 40x lens).



Immunofluorescent analysis of (-20°C Ethanol) fixed HepG2 cells using 17435-1-AP (Transferrin antibody) at dilution of 1:50 and Alexa Fluor 488-conjugated AffiniPure Goat Anti-Rabbit IgG(H+L).