

À des fins de recherche uniquement

Anticorps Polyclonal de lapin anti-FASTKD2



Numéro de catalogue: 17464-1-AP

Phare

17 Publications

Informations de base

Numéro de catalogue:
17464-1-AP

Taille:
150ul, Concentration: 800 µg/ml by
Nanodrop;

Hôte:
Lapin

Isotype:
IgG

Immunogen Catalog Number:
AG11314

Numéro d'acquisition GenBank:
BC001544

Identification du gène (NCBI):
22868

Nom complet:
FAST kinase domains 2

MW calculé:
710 aa, 81 kDa

MW observés:
55-65 kDa

Méthode de purification:
Purification par affinité contre
l'antigène

Dilutions recommandées:
WB 1:500-1:2000
IP 0.5-4.0 ug for IP and 1:200-1:1000
for WB
IF 1:20-1:200

Applications

Applications testées:
IF, IP, WB, ELISA

Demandes citées:
IF, IHC, RIP, WB

Spécificité de l'espèce:
Humain, rat, souris

Espèces citées:
Humain, poisson-zèbre, souris

Contrôles positifs:

WB : cellules HeLa, cellules HepG2, cellules K-562

IP : tissu cardiaque de souris,

IF : cellules COS7, cellules U2OS

Informations générales

FASTKD2 encodes a FAS-activated serine-threonine (FAST) kinase domain 2 which locates in the mitochondrial inner compartment. FASTKD2 is a member of the human FASTK protein family, formed by six architecturally related proteins named FASTK and FASTKD1-5 that localize to mitochondria. The predicted MW of FASTKD2 is 81 kDa, yet the western blot of FASTKD2 revealed a band of ~60 kDa. (PMID: 26370583, PMID: 26990993, PMID: 25683715)

Publications notables

Autrice	Pubmed ID	Journal	Application
Timo Rey	32989247	Nat Cell Biol	IF, WB
Jason D Arroyo	27667664	Cell Metab	WB
Christopher Lowden	34525369	Cell Rep	WB

Stockage

Stockage:

Stocker à -20°C. Stable pendant un an après l'expédition.

Tampon de stockage:

PBS avec azoture de sodium à 0,02 % et glycérol à 50 % pH 7,3

L'aliquotage n'est pas nécessaire pour le stockage à -20C

*** Les 20ul contiennent 0,1% de BSA.

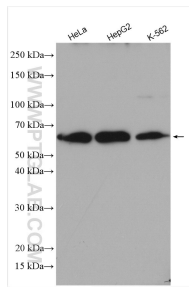
For technical support and original validation data for this product please contact:

T: 1 (888) 4PTGLAB (1-888-478-4522) (toll free
in USA), or 1(312) 455-8498 (outside USA)

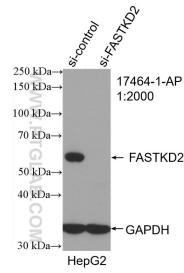
E: proteintech@ptglab.com
W: ptglab.com

This product is exclusively available under Proteintech Group brand and is not available to purchase from any other manufacturer.

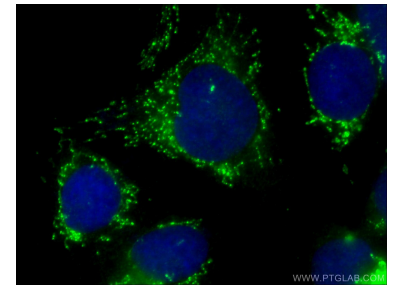
Données de validation sélectionnées



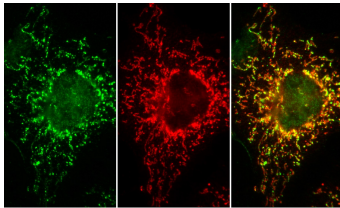
Various lysates were subjected to SDS PAGE followed by western blot with 17464-1-AP (FASTKD2 antibody) at dilution of 1:1000 incubated at room temperature for 1.5 hours.



WB result of FASTKD2 antibody (17464-1-AP; 1:2000; incubated at room temperature for 1.5 hours) with sh-Control and sh-FASTKD2 transfected HepG2 cells.

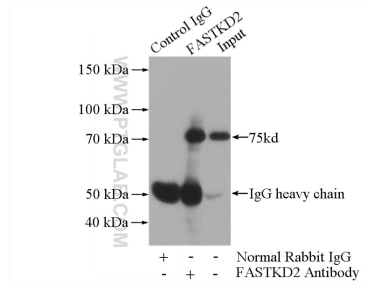


Immunofluorescent analysis of (4% PFA) fixed U2OS cells using 17464-1-AP (FASTKD2 antibody) at dilution of 1:50 and CoraLite488-Conjugated AffiniPure Goat Anti-Rabbit IgG(H+L).



Endogenous protein in COS7 cells detected with 17464-1-AP FAST KD2 and counterstained with human anti-mitochondrial antibody (Immunovision). Cells were fixed with paraformaldehyde and permeabilized with -20 methanol; similar results were obtained using detergent permeabilization following paraformaldehyde fixation.

IF result of anti-FASTKD2 (17464-1-AP) with COS7 cells.



IP Result of anti-FASTKD2 (IP:17464-1-AP, 4ug; Detection:17464-1-AP 1:300) with mouse heart tissue lysate 4000ug.