

À des fins de recherche uniquement

Anticorps Polyclonal de lapin anti-YTHDF1



Numéro de catalogue: 17479-1-AP

Phare

177 Publications

Informations de base

Numéro de catalogue:

17479-1-AP

Taille:

150ul, Concentration: 500 µg/ml by Nanodrop;

Hôte:

Lapin

Isotype:

IgG

Immunogen Catalog Number:

AG11509

Numéro d'acquisition GenBank:

BC050284

Identification du gène (NCBI):

54915

Nom complet:

YTH domain family, member 1

MW calculé

559 aa, 61 kDa

MW observés:

60 kDa

Méthode de purification:

Purification par affinité contre l'antigène

Dilutions recommandées:

WB 1:1000-1:8000

IP 0.5-4.0 ug for IP and 1:500-1:2000 for WB

IHC 1:250-1:1000

IF 1:200-1:800

Applications

Applications testées:

IF, IHC, IP, WB, ELISA

Demandes citées:

CoIP, FC, IF, IHC, IP, RIP, WB

Spécificité de l'espèce:

Humain, rat, souris

Espèces citées:

Humain, poisson-zèbre, porc, poulet, rat, singe, souris

Contrôles positifs:

WB : cellules HeLa, cellules A549, cellules HEK-293, cellules HepG2, cellules Jurkat, cellules MCF-7, tissu cérébral de rat, tissu cérébral de souris

IP : tissu cérébral de souris,

IHC : tissu rénal humain, tissu d'hypothalamus humain

IF : tissu cérébral de souris,

Remarque-IHC: il est suggéré de démasquer l'antigène avec un tampon de TE buffer pH 9,0; (*) À défaut, le démasquage de l'antigène peut être effectué avec un tampon citrate pH 6,0.

Informations générales

YTHDF1, also named YTH domain-containing family protein 1 or C20orf21, is a 559 amino acid protein, which localizes in the cytoplasm. YTHDF1 specifically recognizes and binds N6-methyladenosine (m6A)-containing mRNAs, and promotes mRNA translation efficiency. M6A is a modification present at the internal sites of mRNAs and some non-coding RNAs and plays a role in the efficiency of mRNA splicing, processing, and stability. YTHDF1 acts as a regulator of mRNA translation efficiency: promotes ribosome loading to m6A-containing mRNAs and interacts with translation initiation factors eIF3 (EIF3A or EIF3B) to facilitate translation initiation. YTHDF1 exists two isoforms and the calculated molecular weight of isoforms are 61 kDa and 21 kDa.

Publications notables

Autrice	Pubmed ID	Journal	Application
Fanpeng Zhao	34593014	Mol Neurodegener	WB,IHC
Kusuma Suphakhong	36183833	J Biol Chem	WB
Bin Zhang	32964498	Neurochem Res	WB

Stockage

Stockage:

Stocker à -20°C. Stable pendant un an après l'expédition.

Tampon de stockage:

PBS avec azoture de sodium à 0,02 % et glycérol à 50 % pH 7,3

L'aliquotage n'est pas nécessaire pour le stockage à -20C

*** Les 20ul contiennent 0,1% de BSA.

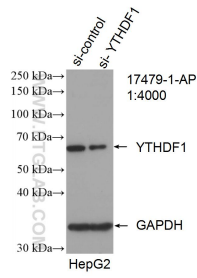
For technical support and original validation data for this product please contact:

T: 1 (888) 4PTGLAB (1-888-478-4522) (toll free in USA), or 1(312) 455-8498 (outside USA)

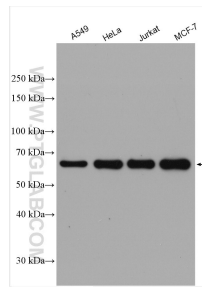
E: proteintech@ptglab.com
W: ptglab.com

This product is exclusively available under Proteintech Group brand and is not available to purchase from any other manufacturer.

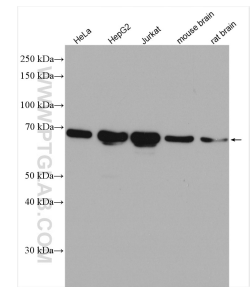
Données de validation sélectionnées



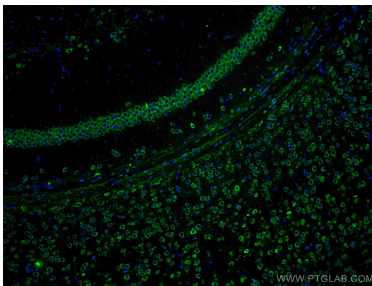
WB result of YTHDF1 antibody (17479-1-AP; 1:4000; incubated at room temperature for 1.5 hours) with sh-Control and sh-YTHDF1 transfected HepG2 cells.



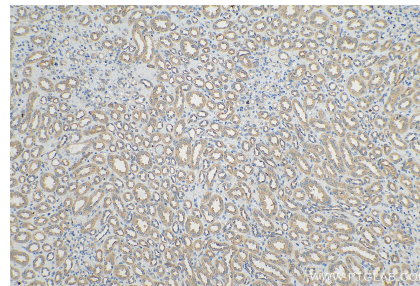
A549 cells were subjected to SDS PAGE followed by western blot with 17479-1-AP (YTHDF1 antibody) at dilution of 1:8000 incubated at room temperature for 1.5 hours.



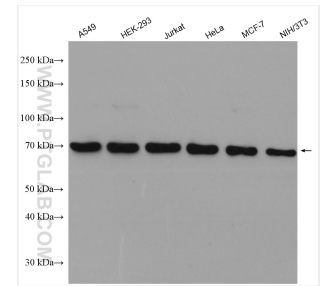
Various lysates were subjected to SDS PAGE followed by western blot with 17479-1-AP (YTHDF1 antibody) at dilution of 1:4000 incubated at room temperature for 1.5 hours.



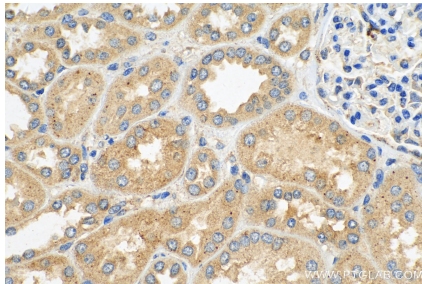
Immunofluorescent analysis of (4% PFA) fixed mouse brain tissue using YTHDF1 antibody (17479-1-AP) at dilution of 1:400 and CoraLite®488-Conjugated AffiniPure Goat Anti-Rabbit IgG(H+L).



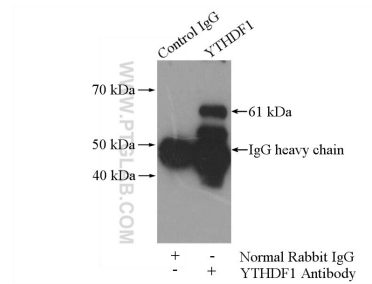
Immunohistochemical analysis of paraffin-embedded human kidney tissue slide using 17479-1-AP (YTHDF1 antibody) at dilution of 1:500 (under 10x lens). Heat mediated antigen retrieval with Tris-EDTA buffer (pH 9.0).



Various lysates were subjected to SDS PAGE followed by western blot with 17479-1-AP (YTHDF1 antibody) at dilution of 1:15000 incubated at room temperature for 1.5 hours.



Immunohistochemical analysis of paraffin-embedded human kidney tissue slide using 17479-1-AP (YTHDF1 antibody) at dilution of 1:500 (under 40x lens). Heat mediated antigen retrieval with Tris-EDTA buffer (pH 9.0).



IP Result of anti-YTHDF1 (IP:17479-1-AP, 4ug; Detection:17479-1-AP 1:1000) with mouse brain tissue lysate 2640ug.