

À des fins de recherche uniquement

# Anticorps Polyclonal de lapin anti-GUF1



Numéro de catalogue: 17489-1-AP **Phare**

## Informations de base

<b>Numéro de catalogue:</b> 17489-1-AP	<b>Numéro d'acquisition GenBank:</b> BC036768	<b>Méthode de purification:</b> Purification par affinité contre l'antigène
<b>Taille:</b> 150ul , Concentration: 500 µg/ml by Nanodrop;	<b>Identification du gène (NCBI):</b> 60558	<b>Dilutions recommandées:</b> WB 1:500-1:2400
<b>Hôte:</b> Lapin	<b>Nom complet:</b> GUF1 GTPase homolog (S. cerevisiae)	IP 0.5-4.0 ug for IP and 1:500-1:1000 for WB
<b>Isotype:</b> IgG	<b>MW calculé:</b> 669 aa, 74 kDa	IHC 1:20-1:200
<b>Immunogen Catalog Number:</b> AG11579	<b>MW observés:</b> 70 kDa	IF 1:10-1:100

## Applications

### Applications testées:

IF, IHC, IP, WB, ELISA

### Spécificité de l'espèce:

Humain, souris

**Remarque-IHC: il est suggéré de démasquer l'antigène avec un tampon de TE buffer pH 9,0; (\*) À défaut, 'le démasquage de l'antigène peut être effectué avec un tampon citrate pH 6,0.**

### Contrôles positifs:

**WB :** cellules HeLa, cellules HepG2, tissu cérébral de souris, tissu pancréatique de souris

**IP :** cellules HeLa,

**IHC :** tissu œsophagien humain, tissu de cancer du poumon humain, tissu rénal humain, tissu testiculaire humain

**IF :** cellules HepG2,

## Informations générales

GUF1 (GUF1 GTPase), also known as EF-4 (elongation factor 4 homolog), is a 669 amino acid protein belonging to the GTP-binding elongation factor family and the LepA subfamily. Localizing to the mitochondrion inner membrane, GUF1 promotes mitochondrial protein synthesis and binds to mitochondrial ribosomes in a GTP-dependent manner. GUF1 may act as a fidelity factor of the translation reaction, by catalyzing a one-codon backward translocation of tRNAs on improperly translocated ribosomes. In western blotting, we got double bands 74 kDa and 70 kDa, due to the N-terminal 1-49 amino acid sequence that could be cut down.

## Stockage

### Stockage:

Stocker à -20°C. Stable pendant un an après l'expédition.

### Tampon de stockage:

PBS avec azoture de sodium à 0,02 % et glycérol à 50 % pH 7,3

L'aliquotage n'est pas nécessaire pour le stockage à -20C

**\*\*\* Les 20ul contiennent 0,1% de BSA.**

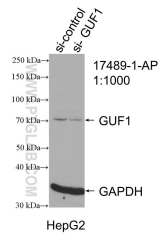
For technical support and original validation data for this product please contact:

T: 1 (888) 4PTGLAB (1-888-478-4522) (toll free in USA), or 1(312) 455-8498 (outside USA)

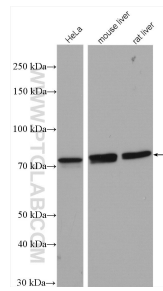
E: proteintech@ptglab.com  
W: ptglab.com

**This product is exclusively available under Proteintech Group brand and is not available to purchase from any other manufacturer.**

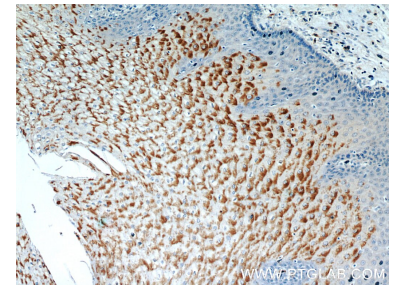
## Données de validation sélectionnées



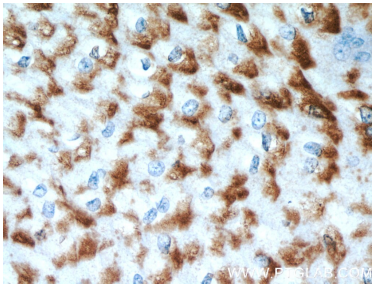
WB result of GUF1 antibody (17489-1-AP; 1:1000; incubated at room temperature for 1.5 hours) with sh-Control and sh-GUF1 transfected HepG2 cells.



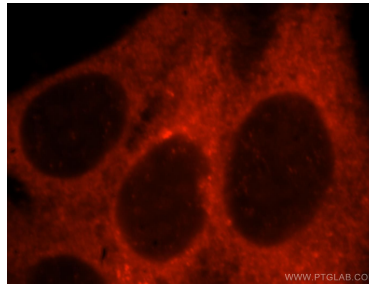
Various lysates were subjected to SDS PAGE followed by western blot with 17489-1-AP (GUF1 antibody) at dilution of 1:2000 incubated at room temperature for 1.5 hours.



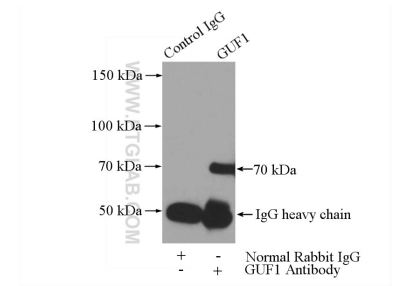
Immunohistochemical analysis of paraffin-embedded human oesophagus using 17489-1-AP (GUF1 antibody) at dilution of 1:50 (under 10x lens).



Immunohistochemical analysis of paraffin-embedded human oesophagus using 17489-1-AP (GUF1 antibody) at dilution of 1:50 (under 40x lens).



Immunofluorescent analysis of HepG2 cells, using GUF1 antibody 17489-1-AP at 1:25 dilution and Rhodamine-labeled goat anti-rabbit IgG (red).



IP Result of anti-GUF1 (IP:17489-1-AP, 3ug; Detection:17489-1-AP 1:500) with HeLa cells lysate 3200ug.