

À des fins de recherche uniquement

Anticorps Polyclonal de lapin anti-MAP2



Numéro de catalogue: 17490-1-AP

199 Publications

Informations de base

Numéro de catalogue:

17490-1-AP

Taille:

150ul, Concentration: 750 µg/ml by Nanodrop;

Hôte:

Lapin

Isotype:

IgG

Immunogen Catalog Number:

AG11580

Numéro d'acquisition GenBank:

BC038857

Identification du gène (NCBI):

4133

Nom complet:

microtubule-associated protein 2

MW calculé

200 kDa

MW observés:

280 kDa, 70-85 kDa

Méthode de purification:

Purification par affinité contre l'antigène

Dilutions recommandées:

WB 1:5000-1:50000

IP 0.5-4.0 µg for IP and 1:5000-1:50000 for WB

IHC 1:2500-1:10000

IF 1:50-1:500

Applications

Applications testées:

FC, IF, IHC, IP, WB, ELISA

Demandes citées:

FC, IF, IHC, WB

Spécificité de l'espèce:

Humain, rat, souris

Espèces citées:

Chèvre, Humain, rat, souris

Remarque-IHC: il est suggéré de démasquer l'antigène avec un tampon de TE buffer pH 9,0; (*) À défaut, 'le démasquage de l'antigène peut être effectué avec un tampon citrate pH 6,0.

Contrôles positifs:

WB : cellules SH-SY5Y, tissu cérébral de rat, tissu cérébral de souris

IP : cellules SH-SY5Y, tissu cérébral de souris

IHC : tissu cérébral de souris, tissu cérébral humain, tissu de gliome humain

IF : tissu cérébral de rat, cellules iPS, tissu cérébral de souris

Informations générales

MAP2 (microtubule-associated protein 2) is a cytoskeleton protein abundant in brain and has important role in neuronal morphogenesis. Multiple high MW and low MW MAP2 isoforms are expressed within proximal segment of axons, dendrites, and cell bodies. The expression of MAP2 is regulated in both a tissue- and developmentally specific manner. The 280 kDa MAP2B is present throughout rat brain development, and the slightly larger MAP2A appears first during the end of the second week of postnatal life. MAP2C, composed of several bands of about 70 kDa, is present during early brain development, and largely disappears from the mature brain except for the retina, olfactory bulb, and cerebellum. In addition, some isoforms with lower MW around 50-60 kDa also exist. MAP2 antibodies have been widely used to mark the neuron or dendrite formation. This antibody can recognize both high MW and low MW isoforms of MAP2.

Publications notables

Autrice	Pubmed ID	Journal	Application
Ji-Qiang Fu	30264483	CNS Neurosci Ther	IF
Minghao Yao	31355388	Biomater Sci	WB
Shengliang Liu	25247595	PLoS One	IF

Stockage

Stockage:

Stocker à -20°C. Stable pendant un an après l'expédition.

Tampon de stockage:

PBS avec azoture de sodium à 0,02 % et glycérol à 50 % pH 7,3

L'aliquotage n'est pas nécessaire pour le stockage à -20C

*** Les 20ul contiennent 0,1% de BSA.

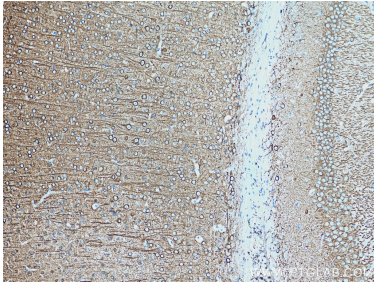
For technical support and original validation data for this product please contact:

T: 1 (888) 4PTGLAB (1-888-478-4522) (toll free in USA), or 1(312) 455-8498 (outside USA)

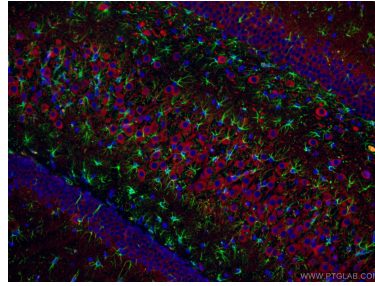
E: proteintech@ptglab.com
W: ptglab.com

This product is exclusively available under Proteintech Group brand and is not available to purchase from any other manufacturer.

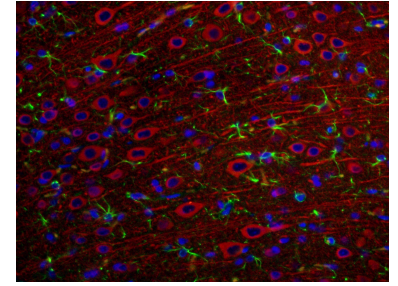
Données de validation sélectionnées



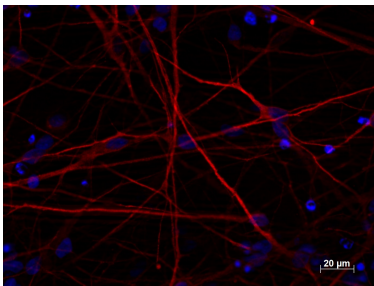
Immunohistochemical analysis of paraffin-embedded mouse brain tissue slide using 17490-1-AP (MAP2 antibody) at dilution of 1:5000 (under 10x lens). Heat mediated antigen retrieval with Tris-EDTA buffer (pH 9.0).



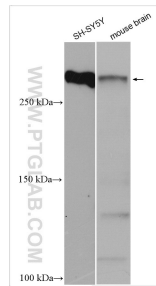
Immunofluorescent analysis of (4% PFA) fixed rat brain tissue using 17490-1-AP (MAP2 antibody) at dilution of 1:100 and CoraLite594-Conjugated AffiniPure Goat Anti-Rabbit IgG(H+L). The section was co-stained with 60190-1-Ig (GFAP antibody, green).



Immunofluorescent analysis of (4% PFA) fixed rat brain tissue using 17490-1-AP (MAP2 antibody) at dilution of 1:100 and CoraLite594-Conjugated AffiniPure Goat Anti-Rabbit IgG(H+L). The section was co-stained with 60190-1-Ig (GFAP antibody, green).



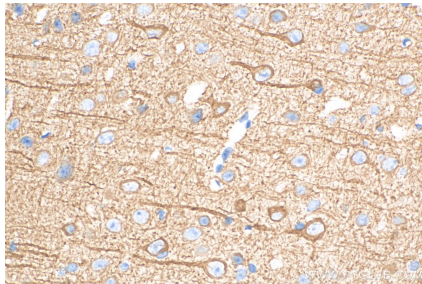
Immunofluorescent staining of MAP2 (17490-1-AP, 1:250 dilution) with 4% PFA fixed control hiPSC derived neuronal cultures (35 days old). (RED MAP2; Blue: DAPI). Provided by BioTalentum Ltd., Hungary.



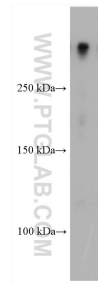
Various lysates were subjected to SDS PAGE followed by western blot with 17490-1-AP (MAP2 antibody) at dilution of 1:30000 incubated at room temperature for 1.5 hours.



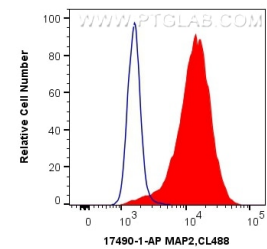
Immunohistochemical analysis of paraffin-embedded mouse brain tissue slide using 17490-1-AP (MAP2 antibody) at dilution of 1:5000 (under 10x lens). Heat mediated antigen retrieval with Tris-EDTA buffer (pH 9.0).



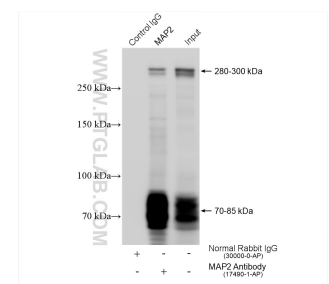
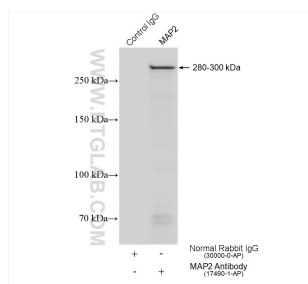
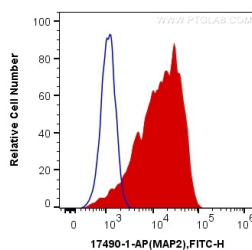
Immunohistochemical analysis of paraffin-embedded mouse brain tissue slide using 17490-1-AP (MAP2 antibody) at dilution of 1:5000 (under 40x lens). Heat mediated antigen retrieval with Tris-EDTA buffer (pH 9.0).



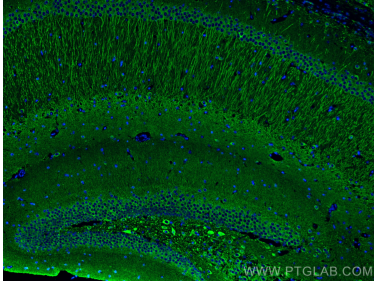
rat brain tissue were subjected to SDS PAGE followed by western blot with 17490-1-AP (MAP2 antibody) at dilution of 1:30000 incubated at room temperature for 1.5 hours.



1X10⁶ Neuro-2a cells were intracellularly stained with 0.4 ug Anti-Human MAP2 (17490-1-AP) and CoraLite®488-Conjugated AffiniPure Goat Anti-Rabbit IgG(H+L) at dilution 1:1000 (red), or 0.4 ug Control Antibody. Cells were fixed with 4% PFA and permeabilized with Flow Cytometry Perm Buffer (PF00011-C).



1X10⁶ SH-SY5Y cells were intracellularly stained with 0.2 ug Anti-Human MAP2 (17490-1-AP) and CoraLite®488-Conjugated AffiniPure Goat Anti-Rabbit IgG(H+L) at dilution 1:1000 (red), or 0.2 ug Control Antibody. Cells were fixed with 4% PFA and permeabilized with 0.1% TritonX-100.



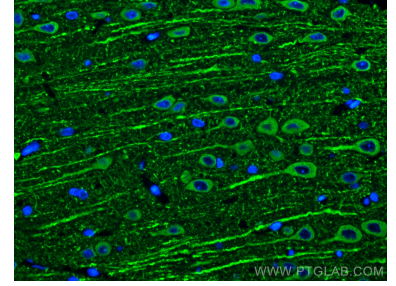
Immunofluorescent analysis of (4% PFA) fixed mouse brain tissue using MAP2 antibody (17490-1-AP) at dilution of 1:200 and CoraLite®488-Conjugated AffiniPure Goat Anti-Rabbit IgG(H+L).

IP result of anti-MAP2(IP:17490-1-AP, 4ug; Detection:17490-1-AP 1:8000) with mouse brain tissue lysate 1280 ug.



Immunofluorescent analysis of (4% PFA) fixed rat brain tissue using MAP2 antibody (17490-1-AP) at dilution of 1:200 and CoraLite®488-Conjugated AffiniPure Goat Anti-Rabbit IgG(H+L).

IP result of anti-MAP2(IP:17490-1-AP, 4ug; Detection:17490-1-AP 1:10000) with SH-SY5Y cells lysate 1240 ug.



Immunofluorescent analysis of (4% PFA) fixed rat brain tissue using MAP2 antibody (17490-1-AP) at dilution of 1:200 and CoraLite®488-Conjugated AffiniPure Goat Anti-Rabbit IgG(H+L).