

À des fins de recherche uniquement

# Anticorps Polyclonal de lapin anti-Cytokeratin 17-Specific



Numéro de catalogue: 17516-1-AP

Phare

19 Publications

## Informations de base

Numéro de catalogue:

17516-1-AP

Taille:

150ul, Concentration: 400 µg/ml by Nanodrop and 400 µg/ml by Bradford method using BSA as the standard;

Hôte:

Lapin

Isotype:

IgG

Numéro d'acquisition GenBank:

NM\_000422

Identification du gène (NCBI):

3872

Nom complet:

keratin 17

MW calculé

48 kDa

MW observés:

48 kDa

Méthode de purification:

Purification par affinité contre l'antigène

Dilutions recommandées:

WB 1:5000-1:50000

IP 0.5-4.0 ug for IP and 1:500-1:2000 for WB

IHC 1:50-1:500

IF 1:300-1:1200

## Applications

Applications testées:

FC, IF, IHC, IP, WB, ELISA

Demandes citées:

ColP, IF, IHC, WB

Spécificité de l'espèce:

Humain, souris

Espèces citées:

Humain, souris

Contrôles positifs:

WB : cellules A431, cellules HEK-293, cellules HeLa, tissu cutané de souris

IP : cellules A431,

IHC : tissu de cancer du col de l'utérus humain, tissu de cancer du poumon humain

IF : cellules HepG2, cellules HeLa

**Remarque-IHC: il est suggéré de démasquer l'antigène avec un tampon de TE buffer pH 9,0; (\*) À défaut, le démasquage de l'antigène peut être effectué avec un tampon citrate pH 6,0.**

## Informations générales

Keratins are a large family of proteins that form the intermediate filament cytoskeleton of epithelial cells, which are classified into two major sequence types. Type I keratins are a group of acidic intermediate filament proteins, including K9-K23, and the hair keratins Ha1-Ha8. Type II keratins are the basic or neutral counterparts to the acidic type I keratins, including K1-K8, and the hair keratins, Hb1-Hb6. Keratin 17 is a type I cytokeratin. It is found in nail beds, hair follicles, sebaceous glands, and other epidermal appendages. It is used as a marker for trauma. This antibody is specifically against KRT17.

## Publications notables

Autrice	Pubmed ID	Journal	Application
Mengjie Li	34845376	Oncogene	WB
Shidi Wu	31790685	Life Sci	WB
Xiaoqiu Zhou	30655849	Oncol Lett	IHC

## Stockage

Stockage:

Stocker à -20°C. Stable pendant un an après l'expédition.

Tampon de stockage:

PBS avec azoture de sodium à 0,02 % et glycérol à 50 % pH 7,3

L'aliquotage n'est pas nécessaire pour le stockage à -20C

\*\*\* Les 20ul contiennent 0,1% de BSA.

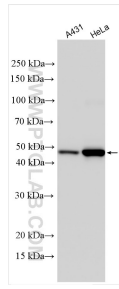
For technical support and original validation data for this product please contact:

T: 1 (888) 4PTGLAB (1-888-478-4522) (toll free in USA), or 1(312) 455-8498 (outside USA)

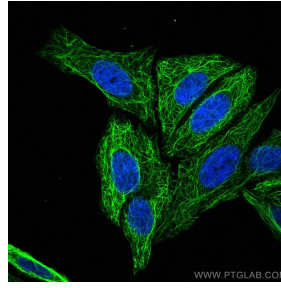
E: proteintech@ptglab.com  
W: ptglab.com

This product is exclusively available under Proteintech Group brand and is not available to purchase from any other manufacturer.

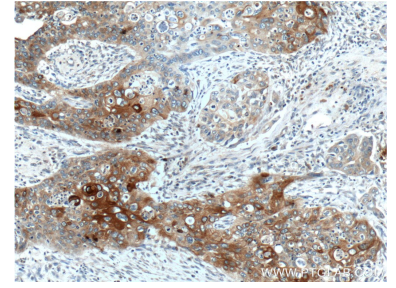
## Données de validation sélectionnées



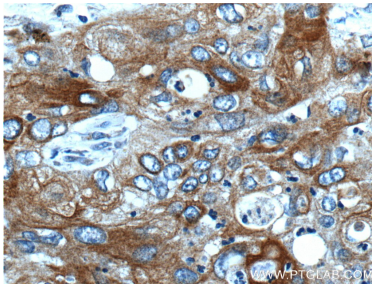
Various lysates were subjected to SDS PAGE followed by western blot with 17516-1-AP (Cytokeratin 17-Specific antibody) at dilution of 1:40000 incubated at room temperature for 1.5 hours.



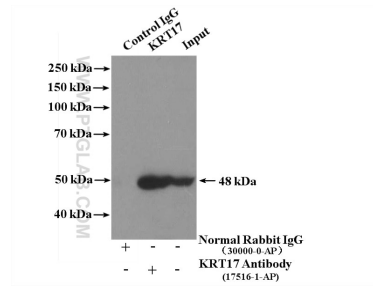
Immunofluorescent analysis of (-20°C Methanol) fixed HepG2 cells using Cytokeratin 17-Specific antibody (17516-1-AP) at dilution of 1:600 and CoraLite®488-Conjugated AffiniPure Goat Anti-Rabbit IgG(H+L).



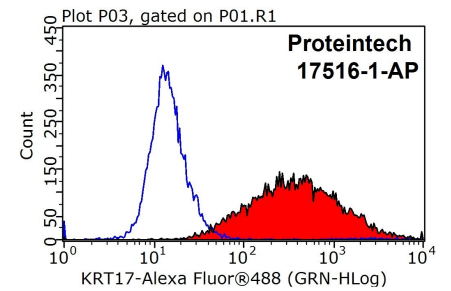
Immunohistochemical analysis of paraffin-embedded human cervical cancer tissue slide using 17516-1-AP (Cytokeratin 17-Specific antibody at dilution of 1:200 (under 10x lens).



Immunohistochemical analysis of paraffin-embedded human cervical cancer tissue slide using 17516-1-AP (Cytokeratin 17-Specific antibody at dilution of 1:200 (under 40x lens).



IP Result of anti-Cytokeratin 17-Specific (IP:17516-1-AP, 4ug; Detection:17516-1-AP 1:1000) with A431 cells lysate 1200ug.



1X10<sup>6</sup> HeLa cells were stained with 0.2ug Cytokeratin 17-Specific antibody (17516-1-AP, red) and control antibody (blue). Fixed with 90% MeOH blocked with 3% BSA (30 min). Alexa Fluor 488-conjugated AffiniPure Goat Anti-Rabbit IgG(H+L) with dilution 1:1000.