

À des fins de recherche uniquement

# Anticorps Polyclonal de lapin anti- ACTA1-Specific



Numéro de catalogue: 17521-1-AP

9 Publications

## Informations de base

Numéro de catalogue:

17521-1-AP

Taille:

150ul, Concentration: 260 µg/ml by Nanodrop;

Hôte:

Lapin

Isotype:

IgG

Numéro d'acquisition GenBank:

NM\_001100

Identification du gène (NCBI):

58

Nom complet:

actin, alpha 1, skeletal muscle

MW calculé

42 kDa

MW observés:

39-42 kDa

Méthode de purification:

Purification par affinité contre l'antigène

Dilutions recommandées:

WB 1:500-1:2000

IHC 1:50-1:500

## Applications

Applications testées:

FC, IHC, WB, ELISA

Demandes citées:

IF, WB

Spécificité de l'espèce:

Humain, rat, souris

Espèces citées:

Humain, rat, souris

Contrôles positifs:

WB : tissu de muscle squelettique humain, tissu de muscle squelettique de rat, tissu de muscle squelettique de souris

IHC : tissu de muscle squelettique humain, tissu d'hystéromyome humain

**Remarque-IHC: il est suggéré de démasquer l'antigène avec un tampon de TE buffer pH 9,0; (\*) À défaut, le démasquage de l'antigène peut être effectué avec un tampon citrate pH 6,0.**

## Informations générales

Actins are highly conserved proteins that are involved in various types of cell motility and are ubiquitously expressed in all eukaryotic cells. The ACTA1 gene encodes skeletal muscle alpha-actin, the principal actin isoform in adult skeletal muscle, which interacts with a variety of proteins to produce the force for muscle contraction. There is only the N-terminal 8 amino acids difference among the actin family members. This antibody is specific to the ACTA1. It does not cross-react with other actin isoforms.

## Publications notables

Autrice	Pubmed ID	Journal	Application
Hongyi Zhou	34502418	Int J Mol Sci	WB
Qing Wang	34786834	J Cell Mol Med	WB
Yongqiang Ai	34149411	Front Pharmacol	WB

## Stockage

Stockage:

Stocker à -20°C. Stable pendant un an après l'expédition.

Tampon de stockage:

PBS avec azoture de sodium à 0,02 % et glycérol à 50 % pH 7,3

L'aliquotage n'est pas nécessaire pour le stockage à -20C

\*\*\* Les 20ul contiennent 0,1% de BSA.

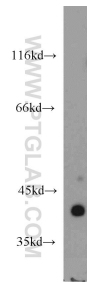
For technical support and original validation data for this product please contact:

T: 1 (888) 4PTGLAB (1-888-478-4522) (toll free in USA), or 1(312) 455-8498 (outside USA)

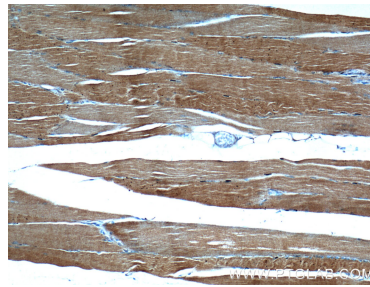
E: [proteintech@ptglab.com](mailto:proteintech@ptglab.com)  
W: [ptglab.com](http://ptglab.com)

This product is exclusively available under Proteintech Group brand and is not available to purchase from any other manufacturer.

## Données de validation sélectionnées



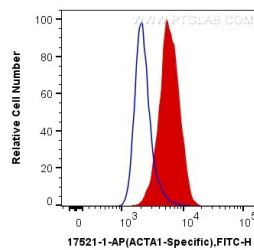
human skeletal muscle tissue were subjected to SDS PAGE followed by western blot with 17521-1-AP (ACTA1-Specific antibody) at dilution of 1:1000 incubated at room temperature for 1.5 hours.



Immunohistochemical analysis of paraffin-embedded human skeletal muscle tissue slide using 17521-1-AP (ACTA1-Specific Antibody) at dilution of 1:500 (under 10x lens).



Immunohistochemical analysis of paraffin-embedded human skeletal muscle tissue slide using 17521-1-AP (ACTA1-Specific Antibody) at dilution of 1:500 (under 40x lens).



1X10<sup>6</sup> C2C12 cells were intracellularly stained with 0.4 ug Anti-Human ACTA1-Specific (17521-1-AP) and CoraLite<sup>®</sup>488-Conjugated AffiniPure Goat Anti-Rabbit IgG(H+L) at dilution 1:1000 (red), or 0.4 ug Control Antibody. Cells were fixed with 4% PFA and permeabilized with Flow Cytometry Perm Buffer (PF00011-C).